

R-22  
50HZ

# Split Air Conditioners ACUM-L + CADX-L Series



Range 4 TR to 21 TR  
( 15 kW to 74 kW )



اجهزة تكييف هواء  
AIR CONDITIONING EQUIPMENT

*you name it  
we cool it*



facebook.com/skmaircon

www.skmaircon.com



@skmaircon

# SKM Split Air Conditioners

## ACUM-L + CADX-L Series - R-22

### Contents

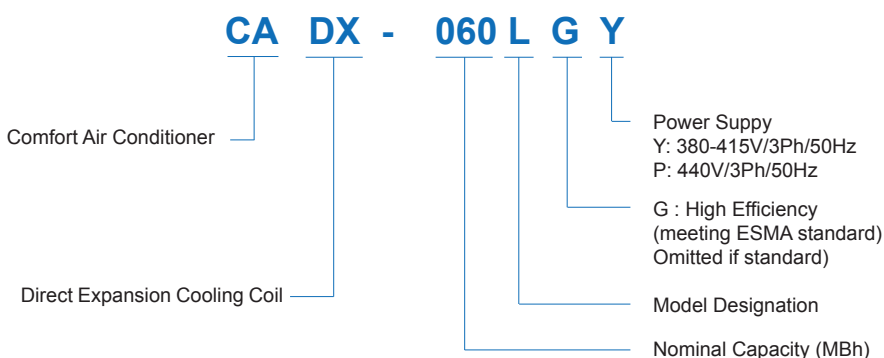
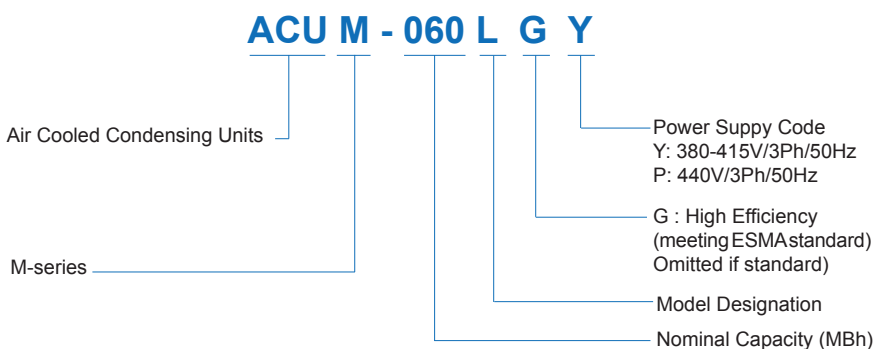
Introduction.....	02	Electrical Data.....	16
Legend.....	02	Typical Wiring Diagram.....	18
Nomenclature.....	02	Dimensional Data.....	19
Component Features.....	03	Recommended Line Sizes.....	23
Optional Features.....	04	Recommended Clearances.....	29
Specifications.....	06	Installation and commissioning.....	30
Capacity Ratings.....	10	Typical Refrigeration Piping.....	31
Fan Performance.....	14	Guide Specifications.....	32

### Legend

The following legends are used throughout this manual:

AFR.....	Air Flow Rate	L/s.....	Liters per second
BPF.....	By Pass Factor	MBh.....	BTUH x 1000
CFM.....	Cubic feet per minute	Pa.....	Pascal
EER.....	Energy Efficiency Ratio	Ph.....	Phase
ESP.....	External Static Pressure	PI.....	Power Input of Compressor in kW
Hz.....	Hertz	RPM.....	Revolutions per Minute
in. wg.....	Inch water gauge	RPS.....	Rated Power Supply
kW.....	Kilowatts	TR.....	Tons of Refrigeration
kg.....	Kilogram	V.....	Volts
lbs.....	Pounds weight		

### Nomenclature



### Introduction

The new series of SKM air cooled split system air conditioner has been developed to satisfy the needs in air conditioning practices, meet high quality of job requirements every time and to deliver the best in split system performance.

SKM air cooled split air conditioners consist of ceiling suspended indoor air handler (CADX-L) matched with floor mounted outdoor air cooled condensing unit (ACUM-L) series.

ACUM-L + CADX-L series is also designed to perform as per ESMA regulation to achieve high efficiency levels in Gulf countries.

SKM air cooled split air conditioners available in 14 variations to cover the range from 4 to 21 TR (15 to 74 kW) in 50Hz at nominal AHRI conditions. It is suitable to operate in a wide range of ambient temperatures from 50 °F (10°C) to 125°F (51.7°C).

SKM split units are internally wired and all that is required to be done on site is ducting, refrigerant piping, power wiring for CADX-L motor from ACUM-L, thermostat wiring and power supply connection which reduces installation work and consequently keeps costs to a minimum. Two independent refrigeration circuits are provided when two compressors are used.

SKM provides qualified service and stock of replacement parts in all major cities of the G.C.C. countries, Egypt, Jordan, and Pakistan. See back cover for details or call SKM.

SKM Air Conditioning LLC



*You name it.....We cool it*

# SKM Split Air Conditioners

## ACUM-L + CADX-L Series - R-22

### GENERAL FEATURES

SKM split system air conditioners incorporate many features and benefits in both the air handler and condensing units, which together provides a heavy duty, robust and long lasting commercial unit's application.

SKM split air conditioners combined high efficiency components to provide an extremely rugged and energy efficient split system that will provide cooling with higher efficiency for a long and extended period of time.

SKM split system is **ACUM-L+ CADX-L** is yet another model in the top class range of SKM products which uses the following basic components:

- High efficiency totally sealed hermetic scroll compressors utilizing the most current state of the art technology and provides smooth, efficient and quiet operation.
- Totally enclosed, Class F insulated, condenser and evaporator fan motors.
- Heavy duty condenser and evaporator coils optimized and designed for a long life maintenance free operation.
- Cabinet construction specifically for gulf climate condition.
- Electronic control board for the unit operation.
- Factory matched performance and reliable output to minimize field decisions.
- Many standard features which are not included in residential domestic type split systems.
- Typically, much heavier gauge tubing and thicker fins for ruggedness and long life.

### COMPONENT FEATURES

#### ACUM-L CONDENSING UNIT

##### Compressor

Compressors used in the **ACUM-L** series condensing units are hermetically sealed, hi-efficiency, low noise, and compact scroll with the following features:

- High efficiency.
- Quiet operation, low sound levels.
- Better debris handling.
- Self compensating of wear ("wear-in vs. wear-out").
- 70% fewer moving parts than comparably sized reciprocating compressors.
- Internal motor protection / Advanced scroll temperature protection.
- Suction gas motor cooling.
- Suction screen.
- Disc type check valve.
- Centrifugal force for oil lubrication.
- Brazed fittings as standard, rotalock as an option.

##### Condenser Coils

Condenser coils are manufactured from cross fin Waffle Louvre and Hi-X seamless copper tubes mechanically bonded to aluminium fins to ensure optimum heat transfer. All coils are tested against leakage by air pressure 450psig (3100 kPa) under water. An integral subcooling circuit is incorporated in the lower section of the condenser to increase system capacity. The additional condenser surface provides more cooling using less energy at no additional cost.

##### Condenser Fans

Condenser fans are propeller type with aluminium alloy blades and are directly driven by electric motors. Motors are Totally Enclosed Air Over (TEAO), six pole or four pole with Class F insulation and minimum IP-54 protection. The TEAO and Class F insulation features ensure long life and are unique to SKM. The condenser fans are individually statically and dynamically balanced at the factory. Complete fan assembly is mounted downward on the strong and acrylic coated fan guard for the smaller units. For larger units fan, assembly is separate and provided with suitable acrylic coated fan guard.

Motors are wired to the control panel to control the operation of these motors along with the compressors.

##### Control Panel

Outdoor condensing units are provided with IP-54 control panel enclosure comprising all starting, operating and safety controls. Following are the standard components used in the **ACUM-L** control panel:

- Starting contactors for compressors and motors.
- Internal overload protection for compressors.
- Internal OR External overload protection for the motors (depending on the model).
- Electronic control board for unit operation.
- Diagnostic LEDs on the control board for easy troubleshooting .
- Compressor short cycling protection.
- Control switch for unit on/off.
- Control circuit breaker.
- Power and control circuit terminal blocks.
- High pressure protection.
- Low pressure protection.
- Starter (contactor & overload relay) for **CADX-L** evaporator fan motor.  
(Power wiring from **ACUM-L** control panel to **CADX-L** motor to be done at site by others)

# SKM Split Air Conditioners ACUM-L + CADX-L Series - R-22

## Unit Casing

The unit casing used in the **ACUM-L** condensing unit is made of zinc coated galvanized steel sheets conforming to JIS-G 3302 and ASTM A525 which is phosphatized and baked after an electrostatic powder coating in RAL7032 color scheme of approximately 60 microns. This finish and coating can pass a 1000 hour in 5% salt spray testing at 95°F (35°C) and 95% relative humidity as per ASTM B117.

## CADX AIR HANDLING UNIT

### Evaporator Coils

All evaporator coils are made of inner grooved copper tubes mechanically bonded into cross wave aluminum fins to ensure optimum heat transfer. Coils conform to AHRI-410. All evaporator coils are tested against leakage by air pressure of 300 psig (2068 kPa) under water. Each evaporator coil is supplied with a factory sized and matched thermostatic expansion valves and 4 mounting holes for ceiling suspension.

### Evaporator Fan & Drive

Evaporator fans are forward curved centrifugal double inlet, double width, statically and dynamically balanced. Bearings used in the fans are self aligning and lubricated for life. Evaporator fans are belt driven and use "V" belts with an adjustable variable pitch motor pulley resulting in an accurate fan air flow adjustment.

Fans are driven by Totally Enclosed, IP55 Protected, 4 Pole Class F insulated electric motors which conform to relevant IEC standards.

### Filter

All **CADX-L** units are supplied as standard with 1" (25mm) thick permanent washable expanded aluminum flat filter having average dust arrestance 54% according to ASHRAE standard 52-76.

### Casing \ Structure (CADX-L):

The unit casing for **CADX-L** is made of zinc coated galvanized steel sheets conforming to JIS-G3302 and ASTM A525 which is phosphatized and baked after an electrostatic powder coating in RAL7032 color scheme of approximately 60 microns. This finish and coating can pass a 1000 hour in 5% salt spray testing at 95°F (35°C) and 95% relative humidity as per ASTM B117. Panels and casing are insulated with 1" (25mm) thick fiberglass (with BGT coating) thermal and acoustic insulation having density of 2 lb/ft<sup>3</sup>. (32 kg/m<sup>3</sup>) and thermal conductivity of 0.23 BTU.in/ft<sup>2</sup>°Fh (0.033 W/m<sup>2</sup>K). Insulation meets the requirements of NFPA 90A and 90B for fire resistance.

## OPTIONAL FEATURES

As with all SKM air conditioning units, a wide range of options are available with SKM Split Units on request.

**Copper Fins** (FC)

**Pre Coated Aluminum Fins** (FAP)

**Aeris Coating for Aluminium Fins /Copper Fins.** (FAA)/(FCA)

**2" (50mm) Flat Filter Section** (FFS)

For heavy filtration need a section can be provided without or with aluminium cleanable filter (FSIP2).

**Voltage Monitoring Module** (VMM)

To prevent **ACUM-L** unit operation in the event of Phase loss Phase reversal, and Under / Over voltage on the incoming line voltage.

**Voltage Monitoring Module as per DEWA** (DVM)

Under voltage relay as per DEWA regulations. This option is available for Dubai, UAE only.

**External Overload Protection** (EOP)

For those electrical specification requires additional overload protection for the compressors.

**High & Low Pressure Gauges** (SDG1)

Factory installed for each compressor to monitor the high side and low side operating pressure.

**Liquid Line Controls** (CRSP)

Refrigeration specialties comprising solenoid valve, filter drier, sight glass and shut-off valve. Factory sizing and selection ensures correctly sized and selected components to complete the field installation.

**Low voltage thermostats** (CHTS)

(1 or 2 stages as per model) for wall mounting and for cooling/heating operation.

**Rotalock Valves on compressors** (RVC)

For additional facilitation of maintenance of unit.

**Circuit Breaker for compressor** (CBC)

For those electrical specification which requires additional short circuit and overload protection for the compressors.



# SKM Split Air Conditioners ACUM-L + CADX-L Series - R-22

## Electric Heater\* (HTR1)

Electric heating batteries are made up of finned heating elements, constructed from high quality 80/20 nickel chrome resistance wire centred in metal tube by compressed magnesium oxide. Helical fins are tightly wound around the tubular heating element.

Heater batteries when ordered comes with CADX-L mounted control panel consisting of stage contactors, primary auto reset thermal safety cut-out, secondary manual reset thermal safety cut-out and air flow switch. Control of the heater stages will be from ACUM-L control panel through heating/cooling thermostat (either supplied by SKM or by customer).

Following are the optional kW ratings for electric heater.

ACUM	CADX	Heater (kW)	Stages
050L	050L	6	1
060L	060L		
070L	070L	7.5	
085L	085L	9	
100L	100L		
110L	120L	12	
120L	120L		
130L	150L	15	
145L	150L		
160L	150L		
180L	180L	18	2
205L	180L		
240L	240L	24	
260L	240L		

Table 1

## Pump Down Facility (PDS)

The compressor will switch off each time with a Pump Down Cycle in order to prevent Liquid refrigerant migration to the compressor during off Cycle periods.

## Condenser Coil Guard (CGG)

Wire mesh guard, in painted finish, for condenser coils. Recommended on ground level installation where coil needs to be protected against vandalism.

## BMS Interface Volt Free Contacts (BMVF)

Volt free contacts for run status, common fault status, and provision for remote on/off shall be provided as option if requirement, please contact SKM.

## Anti-Freeze Thermostat (AFT)

for evaporator coil freeze -up protection.

## Manual Reset Type High Pressure Switch (MHP)

To replace standard auto reset, capsule type pressure switch.

## Run Hour Meter(s) (RHM)

To monitor operating hours of each compressor.

## Up Size Evaporator Motor\* (USM)

Unit with one up size evaporator motor.

## Stainless Steel Drain Pan (PSD)

Stainless steel drain pan 304

## Extra Shut -off Valve (XFV)

To fully isolate refrigerant filter drier ;an additional shut-off valve can be incorporated in the liquid line.

## Pressure relief valve (PRV)

To protect the unit from being over - pressurized.

### Note:

\* Option not available for ESMA approved models.

# SKM Split Air Conditioners ACUM-L + CADX-L Series - R-22

## CONDENSING UNIT SPECIFICATIONS

Condensing Unit	ACUML	050L	060L	070L	085L	100L	110L	120L
Matched Air Handling Unit	CADXL	050L	060L	070L	085L	100L	120L	120L
Cooling Capacity (1)	MBh	50.4	63.3	71.5	84.2	95.7	114.6	124.6
	kW	14.8	18.6	21.0	24.7	28.0	33.6	36.5
Cooling Capacity (2)	MBh	46.5	58.1	65.7	77.5	88.4	105.8	114.7
	kW	13.6	17.0	19.3	22.7	25.9	31.0	33.6
Capacity Steps	%	100-0	100-0	100-0	100-0	100-0	100-50-0	100-50-0
Compressor	Type	Hermetic - Scroll						
	Qty.	1	1	1	1	1	2	2
Outdoor Coil	Type	Waffle louver fins and Hi-X tubes 3/8" OD						
	Qty.	1	1	1	1	1	2	2
	Face Area	ft <sup>2</sup>	20.0	26.7	26.7	26.7	26.7	40.0
m <sup>2</sup>		1.86	2.48	2.48	2.48	2.48	3.72	3.72
No. Refrigerant Circuits		1	1	1	1	1	2	2
Connections (3)	Liquid	in	1/2	1/2	1/2	1/2	1/2 (x2)	1/2 (x2)
	Suction	in	7/8	7/8	7/8	1 1/8	1 1/8	7/8 (x2)
Outdoor Fan	Type	Propeller Direct Drive						
	Code/Qty	550 / 1	723 / 2	723 / 2	723 / 2	723 / 2	550 / 2	630 / 2
	Air Flow	cfm	4430	7090	7090	7030	5760	8760
l/s		2091	3346	3346	3318	2718	4134	4512
Motor	Type	Totally Enclosed Air Over, Class-F Insulation. 4 pole or 6 pole, IP54 protected						
	Size / Qty.	kW / #	0.275 / 1	0.75 / 2	0.75 / 2	0.75 / 2	0.75 / 2	0.275 / 2
Refrigerant Operating Charge R-22 (4)	lbs	6.9	8.6	8.6	13.9	14.3	22.1	22.1
	kg	3.1	3.9	3.9	6.3	6.5	10.0	10.0
Operating Weight Approximate	lbs	321	354	363	446	453	688	697
	kg	146	161	165	202	205	312	316

Condensing Unit	ACUML	130L	145L	160L	180L	205L	240L	260L
Matched Air Handling Unit	CADXL	150L	150L	150L	180L	180L	240L	240L
Cooling Capacity (1)	MBh	131.7	144.1	154.9	171.8	188.4	231.2	250.5
	kW	38.6	42.2	45.4	50.4	55.2	67.8	73.4
Cooling Capacity (2)	MBh	121.5	132.5	142.7	157.8	174.3	213.1	229.4
	kW	35.6	38.8	41.8	46.2	51.1	62.5	67.2
Capacity Steps	%	100-50-0	100-50-0	100-50-0	100-50-0	100-50-0	100-50-0	100-50-0
Compressor	Type	Hermetic - Scroll						
	Qty.	2	2	2	2	2	2	2
Outdoor Coil	Type	Waffle louver fins and Hi-X tubes 3/8" OD						
	Qty.	2	2	2	2	2	2	2
	Face Area	ft <sup>2</sup>	40.0	40.0	40.0	48.0	48.0	54.7
m <sup>2</sup>		3.7	3.7	3.7	4.5	4.5	5.1	5.1
No. Refrigerant Circuits		2	2	2	2	2	2	2
Connections (3)	Liquid	in	1/2 (x2)	1/2 (x2)	1/2 (x2)	1/2 (x2)	1/2 (x2)	5/8 (x2)
	Suction	in	7/8 (x2)	7/8 (x2)	7/8 (x2)	1 1/8 (x2)	1 1/8 (x2)	1 1/8 (x2)
Outdoor Fan	Type	Propeller Direct Drive						
	Code/Qty	630 / 2	630 / 2	723 / 2	723 / 2	729 / 2	823 / 2	823 / 2
	Air Flow	cfm	9560	9560	13900	13900	15540	19640
l/s		4512	4512	6560	6560	7334	9269	9269
Motor	Type	Totally Enclosed Air Over, Class-F Insulation. 4 pole or 6 pole, IP54 protected						
	Size / Qty.	kW / #	0.357 / 2	0.357 / 2	0.75 / 2	0.75 / 2	1.1 / 2	1.1 / 2
Refrigerant Operating Charge R-22 (4)	lbs	22.1	22.3	22.9	23.1	25.5	31.7	31.7
	kg	10.0	10.1	10.4	10.5	11.6	14.4	14.4
Operating Weight Approximate	lbs	707	713	780	860	946	909	913
	kg	321	323	354	390	429	412	414

Table 2

### Notes:

- (1) The capacity ratings are based on AHRI standard 210/240 & 340/360. Evaporator entering air conditions of 80°F/67°F (26.7°C/19.5°C) dry bulb / wet bulb and condenser entering air temperature of 95°F (35°C) dry bulb.
- (2) Evaporator entering air conditions of 80°F/67°F (26.7°C/19.5°C) dry bulb / wet bulb and condenser entering air temperature of 115°F(46°C) dry bulb.
- (3) Connections are based on 25 ft maximum linear distance between the outdoor & indoor unit and 66 ft maximum lift.
- (4) Refrigerant operating charge is for combined condensing unit with the matching air handling unit and 25 ft (7.6m) of interconnecting refrigerant lines.

Capacity for condition (1) & (2) are gross which doesn't include the effect of evaporator fan motor heat.

# SKM Split Air Conditioners ACUM-L + CADX-L Series - R-22

## AIR HANDLING UNIT SPECIFICATIONS

Condensing Unit	CADXL	050L	060L	070L	085L	100L	110L	120L
Matched Air Handling Unit	ACUML	050L	060L	070L	085L	100L	120L	120L
Cooling Capacity (1)	MBh	50.4	63.3	71.5	84.2	95.7	114.6	124.6
	kW	14.8	18.6	21.0	24.7	28.0	33.6	36.5
Cooling Capacity (2)	MBh	46.5	58.1	65.7	77.5	88.4	105.8	114.7
	kW	13.6	17.0	19.3	22.7	25.9	31.0	33.6
Indoor Coil	Type	Hi-X tubes 3/8" OD						
	Face Area	ft <sup>2</sup>	4.17	5.81	5.81	6.25	7.99	7.99
		m <sup>2</sup>	0.4	0.5	0.5	0.6	0.7	0.7
Refrigerant Control		Thermostatic Expansion Valve(s)						
Connections (3)	Liquid	in	1/2	1/2	1/2	1/2	1/2	1/2 (x2)
	Suction	in	7/8	7/8	7/8	1 1/8	1 1/8	7/8 (x2)
Indoor Fan	Type	Centrifugal DIDW Belt Drive						
	Code		10/10	10/10	10/10	12/12	12/12	12/12
	Air Flow	cfm	1700	2000	2400	2800	3000	3600
l/s		802	944	1133	1321	1416	1699	
Motor	Type	Totally Enclosed Fan Cooled, Class-F Insulation. 4 pole, IP55 protected						
	Size / Qty.	kW / #	0.55 / 1	0.55 / 1	0.75 / 1	1.1 / 1	1.1 / 1	1.5 / 1
Operating Weight Approximate		lbs	204	225	225	265	310	334
		kg	93	102	102	120	141	151

Condensing Unit	CADXL	150L	150L	150L	180L	180L	240L	240L
Matched Air Handling Unit	ACUML	130L	145L	160L	180L	205L	240L	260L
Cooling Capacity (1)	MBh	131.7	144.1	154.9	171.8	188.4	231.2	250.5
	kW	38.6	42.2	45.4	50.4	55.2	67.8	73.4
Cooling Capacity (2)	MBh	121.5	132.5	142.7	157.8	174.3	213.1	229.4
	kW	35.6	38.8	41.8	46.2	51.1	62.5	67.2
Indoor Coil	Type	Hi-X tubes 3/8" OD						
	Face Area	ft <sup>2</sup>	11.67	11.67	11.67	14.17	14.17	19.36
		m <sup>2</sup>	1.1	1.1	1.1	1.3	1.3	1.8
Refrigerant Control		Thermostatic Expansion Valve(s)						
Connections (3)	Liquid	in	1/2 (x2)	1/2 (x2)	1/2 (x2)	1/2 (x2)	1/2 (x2)	5/8 (x2)
	Suction	in	7/8 (x2)	7/8 (x2)	1 1/8 (x2)	1 1/8 (x2)	1 1/8 (x2)	1 1/8 (x2)
Indoor Fan	Type	Centrifugal DIDW Belt Drive						
	Code		15/15	15/15	12/12 R2	12/12 R2	15/15 R2	15/15 R2
	Air Flow	cfm	4200	4800	4800	5800	6200	8000
l/s		1982	2265	2265	2737	2926	3775	
Motor	Type	Totally Enclosed Fan Cooled, Class-F Insulation. 4 pole, IP55 protected						
	Size / Qty.	kW / #	1.5 / 1	1.5 / 1	1.5 / 1	2.2 / 1	2.2 / 1	2.2 / 1
Operating Weight Approximate		lbs	442	442	459	469	469	678
		kg	200	200	208	213	213	307

Table 3

### Notes:

- (1) The capacity ratings are based on AHRI standard 210/240 & 340/360. Evaporator entering air conditions of 80°F/67°F (26.7°C/19.5°C) dry bulb / wet bulb and condenser entering air temperature of 95°F (35°C) dry bulb.
- (2) Evaporator entering air conditions of 80°F/67°F (26.7°C/19.5°C) dry bulb / wet bulb and condenser entering air temperature of 115°F(46°C) dry bulb.
- (3) Connections are based on 25 ft maximum linear distance between the outdoor & indoor unit and 66 ft maximum lift.

Capacity for condition (1) & (2) are gross which doesn't include the effect of evaporator fan motor heat.

# SKM Split Air Conditioners ACUM-L + CADX-L Series - R-22

## CONDENSING UNIT SPECIFICATIONS (ESMA APPROVED)

Condensing Unit	ACUML	050L G	060L G	070L G	085L G	100L G	110L G	120L G	
Matched Air Handling Unit	CADXL	060L G	060L G	070L G	100L G	100L G	120L G	120L G	
Cooling Capacity (1)	MBh	46.9	55.4	65.4	74.1	84.1	96.6	107.7	
	kW	13.7	16.2	19.2	21.7	24.7	28.3	31.6	
	EER	8.2	8.3	8.2	8.1	8.3	8.1	8.1	
Capacity Steps	%	100-0	100-0	100-0	100-0	100-0	100-50-0	100-50-0	
Compressor	Type	Hermetic - Scroll							
	Qty.	1	1	1	1	1	2	2	
Outdoor Coil	Type	Hi-X tubes 3/8" OD							
	Qty.	1	1	1	1	1	2	2	
	Face Area	ft <sup>2</sup>	27.3	32.0	32.0	32.0	32.0	56.0	56.0
		m <sup>2</sup>	2.5	3.0	3.0	3.0	3.0	5.2	5.2
No. Refrigerant Circuits		1	1	1	1	1	2	2	
Connections (2)	Liquid	in	1/2	1/2	1/2	1/2	1/2	1/2 (x2)	1/2 (x2)
	Suction	in	7/8	7/8	7/8	1 1/8	1 1/8	7/8 (x2)	7/8 (x2)
Outdoor Fan	Type	Propeller Direct Drive							
	Code/Qty	630 / 1	710 / 1	710 / 1	710 / 1	710 / 1	630 / 2	630 / 2	
	Air Flow	cfm	5340	8250	8380	8380	8200	10780	10720
		l/s	2520	3894	3955	3955	3870	5088	5060
Motor	Type	Totally Enclosed Air Over, Class-F Insulation. 4 pole or 6 pole, IP54 protected							
	Size / Qty.	kW / #	0.357 / 1	0.584 / 1	0.584 / 1	0.584 / 1	0.584 / 1	0.357 / 2	0.357 / 2
Refrigerant Operating Charge R-22 (3)	lbs	20.5	21.7	21.7	23.5	23.5	36.6	36.6	
	kg	9.3	9.8	9.8	10.6	10.6	16.6	16.6	
Operating Weight Approximate	lbs	429	464	472	492	500	806	794	
	kg	195	211	215	224	227	366	360	

Condensing Unit	ACUML	130L G	160L G	180L G	205L G	240L G	260L G	
Matched Air Handling Unit	CADXL	150L G	150L G	180L G	180L G	240L G	240L G	
Cooling Capacity (1)	MBh	117.6	130.5	150.1	166.9	209.2	228.5	
	kW	34.5	38.2	44.0	48.9	61.3	67.0	
	EER	8.3	8.3	8.2	8.1	8.1	8	
Capacity Steps	%	100-50-0	100-50-0	100-50-0	100-50-0	100-50-0	100-50-0	
Compressor	Type	Hermetic - Scroll						
	Qty.	2	2	2	2	2	2	
Outdoor Coil	Type	Hi-X tubes 3/8" OD						
	Qty.	2	2	2	2	2	2	
	Face Area	ft <sup>2</sup>	56.0	56.0	56.0	56.0	54.7	54.7
		m <sup>2</sup>	5.2	5.2	5.2	5.2	5.1	5.1
No. Refrigerant Circuits		2	2	2	2	2	2	
Connections (2)	Liquid	in	1/2 (x2)	1/2 (x2)	1/2 (x2)	1/2 (x2)	5/8 (x2)	5/8 (x2)
	Suction	in	7/8 (x2)	7/8 (x2)	1 1/8 (x2)	1 1/8 (x2)	1 1/8 (x2)	1 1/8 (x2)
Outdoor Fan	Type	Propeller Direct Drive						
	Code/Qty	710 / 2	710 / 2	710 / 2	710 / 2	823 / 2	823 / 2	
	Air Flow	cfm	16560	16560	16560	16120	19540	19540
		l/s	7816	7816	7816	7609	9223	9223
Motor	Type	Totally Enclosed Air Over, Class-F Insulation. 4 pole or 6 pole, IP54 protected						
	Size / Qty.	kW / #	2 / 2	0.584 / 2	0.584 / 2	0.584 / 0.504	1.1 / 2	1.1 / 2
Refrigerant Operating Charge R-22 (3)	lbs	38.0	38.0	40.1	40.1	60.5	60.5	
	kg	17.2	17.2	18.2	18.2	27.4	27.4	
Operating Weight Approximate	lbs	894	938	1018	1026	1030	1034	
	kg	406	425	462	466	468	470	

Table 4

### Notes:

- 1) Evaporator entering air conditions of 84.2°F/66.2°F (29.0°C/19.0°C) dry bulb/wet bulb and condenser entering air temperature of 114.8°F (46°C) dry bulb. (Net Capacity)
- 2) Connections are based on 25 ft maximum linear distance between the outdoor & indoor unit and 66 ft maximum lift.
- 3) Refrigerant operating charge is for combined condensing unit with the matching air handling unit and 25 ft (7.6m) of interconnecting refrigerant lines.



# SKM Split Air Conditioners ACUM-L + CADX-L Series - R-22

## AIR HANDLING UNIT SPECIFICATIONS (ESMA APPROVED)

Matched Air Handling Unit	CADXL	060LG	060LG	070LG	100LG	100LG	120LG	120LG	
Condensing Unit	ACUML	050LG	060LG	070LG	085LG	100LG	110LG	120LG	
Cooling Capacity (1)	MBh	49.7	58.2	68.9	78.9	88.9	103.2	114.3	
	kW	14.6	17.1	20.2	23.1	26.1	30.2	33.5	
Indoor Coil	Type	Hi-X tubes 3/8" OD							
	Face Area	ft <sup>2</sup>	5.8	5.8	5.8	8.0	8.0	8.0	8.0
		m <sup>2</sup>	0.5	0.5	0.5	0.7	0.7	0.7	0.7
Refrigerant Control		Thermostatic Expansion Valve(s)							
Connections (3)	Liquid	in	1/2	1/2	1/2	1/2	1/2	1/2 (x2)	1/2 (x2)
	Suction	in	7/8	7/8	7/8	1 1/8	1 1/8	7/8 (x2)	7/8 (x2)
Indoor Fan	Type	Centrifugal DIDW Belt Drive							
	Code		10/10	10/10	10/10	12/12	12/12	12/12	12/12
	Air Flow	cfm	1700	2000	2400	2800	3000	3600	3600
		l/s	802	944	1133	1321	1416	1699	1699
Motor	Type	Totally Enclosed Fan Cooled, Class-F Insulation. 4 pole, IP55 protected							
	Size / Qty.	kW / #	0.55 / 1	0.55 / 1	0.75 / 1	1.1 / 1	1.1 / 1	1.5 / 1	1.5 / 1
Operating Weight Approximate	lbs	236	236	236	324	324	348	348	
	kg	107	107	107	147	147	158	158	

Matched Air Handling Unit	CADXL	150LG	150LG	180LG	180LG	240LG	240LG	
Condensing Unit	ACUML	130LG	160LG	180LG	205LG	240LG	260LG	
Cooling Capacity (1)	MBh	124.2	137.1	159.0	175.8	218.1	237.4	
	kW	36.4	40.2	46.6	51.5	63.9	69.6	
Indoor Coil	Type	Hi-X tubes 3/8" OD						
	Face Area	ft <sup>2</sup>	11.7	11.7	14.2	14.2	19.4	19.4
		m <sup>2</sup>	1.1	1.1	1.3	1.3	1.8	1.8
Refrigerant Control		Thermostatic Expansion Valve(s)						
Connections (3)	Liquid	in	1/2 (x2)	1/2 (x2)	1/2 (x2)	1/2 (x2)	5/8 (x2)	5/8 (x2)
	Suction	in	7/8 (x2)	1 1/8 (x2)	1 1/8 (x2)	1 1/8 (x2)	1 1/8 (x2)	1 1/8 (x2)
Indoor Fan	Type	Centrifugal DIDW Belt Drive						
	Code		15/15	12/12 R2	12/12 R2	15/15 R2	15/15 R2	15/15 R2
	Air Flow	cfm	4200	4800	5800	6200	8000	8000
		l/s	1982	2265	2737	2926	3775	3775
Motor	Type	Totally Enclosed Fan Cooled, Class-F Insulation. 4 pole, IP55 protected						
	Size / Qty.	kW / #	1.5 / 1	1.5 / 1	2.2 / 1	2.2 / 1	2.2 / 1	2.2 / 1
Operating Weight Approximate	lbs	464	464	495	495	703	703	
	kg	210	210	225	225	319	319	

Table 5

### Notes:

- 1) Evaporator entering air conditions of 80°F/67°F (26.6°C/19.5°C) dry bulb / wet bulb and condenser entering air temperature of 115°F (46.1°C) dry bulb.
- 2) Connections are based on 25 ft maximum linear distance between the outdoor & indoor unit and 66 ft maximum lift.

# SKM Split Air Conditioners ACUM-L + CADX-L Series - R-22

## CAPACITY RATINGS

ACUML + CADXL	AFR cfm	EWB		Condenser Entering Air Temperature																													
				95°F (35°C)						105°F (40.6°C)						115°F (46.1°C)						118.4°F (48°C)						125°F (51.7°C)					
				Total Capacity		Sensible Capacity		PI*	Total Capacity		Sensible Capacity		PI*	Total Capacity		Sensible Capacity		PI*	Total Capacity		Sensible Capacity		PI*	Total Capacity		Sensible Capacity		PI*					
				MBh	kW	MBh	kW	kW	MBh	kW	MBh	kW	kW	MBh	kW	MBh	kW	kW	MBh	kW	MBh	kW	kW	MBh	kW	MBh	kW	kW					
(BPF)	*F	*C																															
050L + 050L	1146	62	16.7	43.6	12.8	36.2	10.6	3.5	41.9	12.3	35.4	10.4	4	40.1	11.8	34.7	10.2	4.4	39.5	11.6	34.4	10.1	4.6	38.3	11.2	33.9	9.9	4.9					
	541	67	19.4	47.1	13.8	30.3	8.9	3.6	45.3	13.3	29.6	8.7	4	43.6	12.8	28.9	8.5	4.5	42.9	12.6	28.6	8.4	4.7	41.8	12.2	28.2	8.3	5					
	0.17	72	22.2	50.9	14.9	24.4	7.1	3.7	49	14.4	23.7	6.9	4.1	47.1	13.8	23	6.7	4.6	46.4	13.6	22.8	6.7	4.8	45.1	13.2	22.3	6.5	5					
	1700	62	16.7	46.3	13.6	44	12.9	3.6	44	12.9	43.1	12.6	4	41.8	12.2	41.8	12.2	4.5	41	12	41	12	4.6	39.7	11.6	39.7	11.6	4.9					
	802	67	19.4	50.4	14.8	36.1	10.6	3.6	48.5	14.2	35.4	10.4	4.1	46.5	13.6	34.7	10.2	4.6	45.8	13.4	34.5	10.1	4.7	44.5	13	34	10	5					
	0.22	72	22.2	54.3	15.9	28.1	8.2	3.7	52.2	15.3	27.4	8	4.2	49.9	14.6	26.6	7.8	4.7	49.1	14.4	26.4	7.7	4.8	48.8	14.3	26.8	7.8	4.9					
	2292	62	16.7	47.2	13.8	47.2	13.8	3.6	45.1	13.2	45.1	13.2	4	42.9	12.6	42.9	12.6	4.5	42.2	12.4	42.2	12.4	4.7	40.9	12	40.9	12	5					
	1082	67	19.4	52.5	15.4	41.7	12.2	3.7	50.4	14.8	41	12	4.2	48.3	14.1	40.3	11.8	4.6	47.5	13.9	40	11.7	4.8	45.9	13.4	39.4	11.6	5.1					
	0.26	72	22.2	56.4	16.5	31.6	9.2	3.8	54	15.8	30.8	9	4.3	51.6	15.1	30.1	8.8	4.8	50.8	14.9	29.8	8.7	4.9	0.0	0	0.0	0	0					
	1597	62	16.7	56.1	16.4	48.4	14.2	4	53.8	15.8	47.4	13.9	4.6	50.7	14.8	46	13.5	5.2	49.6	14.5	45.6	13.4	5.4	47.7	14	44.8	13.1	5.7					
754	67	19.4	60.9	17.8	40.3	11.8	4.1	58.5	17.2	39.4	11.5	4.7	56	16.4	38.4	11.3	5.2	55.1	16.2	38.1	11.2	5.4	53.5	15.7	37.5	11	5.8						
0.17	72	22.2	65.7	19.3	32.1	9.4	4.2	63.1	18.5	31.2	9.2	4.7	60.5	17.7	30.3	8.9	5.3	59.6	17.5	30	8.8	5.6	57.8	16.9	29.4	8.6	5.9						
2000	62	16.7	57.6	16.9	54	15.8	4	54.8	16.1	52.9	15.5	4.6	51.8	15.2	51.6	15.1	5.2	50.8	14.9	50.8	14.9	5.4	48.9	14.3	48.9	14.3	5.8						
944	67	19.4	63.3	18.5	44.7	13.1	4.1	60.8	17.8	43.8	12.8	4.7	58.1	17	42.8	12.5	5.3	57.2	16.8	42.4	12.4	5.5	55.5	16.3	41.8	12.3	5.9						
0.19	72	22.2	68.1	19.9	34.8	10.2	4.2	65.3	19.1	33.9	9.9	4.8	62.5	18.3	33	9.7	5.4	61.6	18	32.7	9.6	5.6	59.7	17.5	32.1	9.4	6						
3193	62	16.7	60	17.6	60	17.6	4.1	57.3	16.8	57.3	16.8	4.6	54.4	16	54.4	16	5.2	53.5	15.7	53.5	15.7	5.4	51.7	15.1	51.7	15.1	5.8						
1507	67	19.4	67.4	19.7	56.1	16.5	4.2	64.3	18.8	55.1	16.1	4.8	60.9	17.9	53.9	15.8	5.4	59.8	17.5	53.5	15.7	5.6	57.6	16.9	52.8	15.5	5.9						
0.26	72	22.2	71.8	21	41.8	12.3	4.3	68.8	20.2	40.9	12	4.9	-	-	-	-	-	-	-	-	-	-	-	-	-	-	-						
1597	62	16.7	61.9	18.2	51	14.9	4.9	59.4	17.4	49.8	14.6	5.5	56.6	16.6	48.6	14.2	6.2	55.7	16.3	48.2	14.1	6.4	54	15.8	47.4	13.9	6.8						
754	67	19.4	66.7	19.6	42.7	12.5	5	64.1	18.8	41.6	12.2	5.6	61.4	18	40.5	11.9	6.3	60.5	17.7	40.2	11.8	6.5	58.8	17.2	39.5	11.6	6.9						
0.17	72	22.2	72	21.1	34.4	10.1	5.1	69.3	20.3	33.4	9.8	5.8	66.4	19.5	32.4	9.5	6.4	65.4	19.2	32	9.4	6.7	63.7	18.7	31.4	9.2	7.1						
2400	62	16.7	66.1	19.4	62.4	18.3	5	62.6	18.4	61	17.9	5.6	59.2	17.3	59.2	17.3	6.2	58	17	58	17	6.5	56	16.4	56	16.4	6.9						
1133	67	19.4	71.5	21	51.1	15	5.1	68.7	20.1	50.1	14.7	5.7	65.7	19.3	49	14.4	6.4	64.7	19	48.6	14.3	6.6	62.9	18.4	48	14.1	7						
0.22	72	22.2	77	22.6	39.7	11.6	5.2	73.9	21.7	38.7	11.3	5.9	70.7	20.7	37.6	11	6.6	69.6	20.4	37.3	10.9	6.8	69.1	20.2	37.1	10.87	6.9						
3193	62	16.7	67.3	19.7	67.3	19.7	5	64	18.7	64	18.7	5.6	60.7	17.8	60.7	17.8	6.3	59.6	17.5	59.6	17.5	6.5	57.6	16.9	57.6	16.9	6.9						
1507	67	19.4	74.3	21.8	58.6	17.2	5.1	71.3	20.9	57.5	16.9	5.8	68.2	20	56.4	16.5	6.5	67.1	19.7	56.1	16.4	6.7	65.1	19.1	55.3	16.2	7.1						
0.26	72	22.2	79.7	23.4	44.3	13	5.2	76.4	22.4	43.3	12.7	5.9	73	21.4	42.2	12.4	6.7	71.8	21.1	41.9	12.3	7	71.3	20.9	41.7	12.2	7.1						
1719	62	16.7	-	-	-	-	-	68.8	20.2	55.8	16.4	6	65.6	19.2	54.4	15.9	6.8	64.4	18.9	53.9	15.8	7.1	62.3	18.3	52.9	15.5	7.7						
811	67	19.4	77.5	22.7	48.3	14.1	5.4	74.3	21.8	46.9	13.8	6.1	71	20.8	45.6	13.4	6.9	69.9	20.5	45.2	13.2	7.2	67.9	19.9	44.3	13	7.7						
0.17	72	22.2	83.5	24.5	39.2	11.5	5.5	80.4	23.6	38	11.1	6.2	77.1	22.6	36.8	10.8	7	76	22.3	36.4	10.7	7.3	73.9	21.6	35.7	10.5	7.8						
2800	62	16.7	77.7	22.8	72.4	21.2	5.4	74.5	21.8	71.1	20.8	6.1	70.4	20.6	69.4	20.3	6.9	68.9	20.2	68.8	20.2	7.2	66.1	19.4	66.1	19.4	7.7						
1321	67	19.4	84.2	24.7	59.5	17.4	5.5	80.9	23.7	58.3	17.1	6.2	77.5	22.7	57	16.7	7	76.3	22.4	56.6	16.6	7.3	74.1	21.7	55.7	16.3	7.8						
0.23	72	22.2	91.1	26.7	46.4	13.6	5.6	87.6	25.7	45.3	13.3	6.3	83.9	24.6	44.1	12.9	7.1	82.6	24.2	43.7	12.8	7.4	80.1	23.5	42.9	12.6	7.9						
3438	62	16.7	79.8	23.4	79.8	23.4	5.4	75.7	22.7	75.7	22.7	6.1	71.4	20.9	71.4	20.9	6.9	70	20.5	70	20.5	7.2	67.4	19.7	67.4	19.7	7.7						
1623	67	19.4	86.7	25.4	66.4	19.2	5.5	83.3	24.4	64.2	18.8	6.2	79.8	23.4	63	18.5	7.1	78.5	23	62.5	18.3	7.3	76.2	22.3	61.7	18.1	7.8						
0.26	72	22.2	93.7	27.5	50.2	14.7	5.7	90.1	26.4	49.1	14.4	6.4	86.2	25.3	47.8	14	7.2	84.8	24.9	47.4	13.9	7.5	82.2	24.1	46.6	13.7	8						
2196	62	16.7	84	24.6	69.6	20.4	6.1	80.8	23.7	68.1	20	6.9	77.4	22.7	66.6	19.5	7.9	76.2	22.3	66.1	19.4	8.2	74	21.7	65.1	19.1	8.7						
1036	67	19.4	90.6	26.6	58.2	17.1	6.2	87.3	25.6	56.9	16.7	7	83.9	24.6	55.5	16.3	8	82.8	24.3	55.1	16.1	8.3	80.5	23.6	54.2	15.9	8.8						
0.17	72	22.2	97.9	28.7	46.8	13.7	6.4	94.3	27.6	45.6	13.4	7.2	90.6	26.5	44.2	13	8.1	89.3	26.2	43.8	12.8	8.4	86.7	25.4	42.9	12.6	9						
3000	62	16.7	88.3	25.9	81.1	23.8	6.2	84.5	24.8	79.6	23.3	7	80.1	23.5	77.7	22.8	7.9	78.7	23.1	77.1	22.6	8.2	75.9	22.3	75.9	22.3	8.8						
1416	67	19.4	95.7	28	66.8	19.6	6.3	92.1	27	65.5	19.2	7.1	88.4	25.9	64.1	18.8	8	87.1	25.5	63.6	18.6	8.3	84.6	24.8	62.7	18.4	8.9						
0.21	72	22.2	103.1	30.2	52.3	15.3	6.5	99.2	29.1	51	14.9	7.3	94.9	27.8	49.6	14.5	8.2	93.4	27.4	49.1	14.4	8.6	90.5	26.5	48.1	14.1	9.1						
4392	62	16.7	91	26.7	91	26.7	6.2	86.9	25.5	86.9	25.5	7	82.8	24.3	82.8	24.3	7.9	81.4	23.9	81.4	23.9	8.2	78.8	23.1	78.8	23.1	8.8						
2073	67	19.4	100.9	29.6	80.1	23.5	6.4	97	28.4	78.7	23.1	7.3	92.9	27.2	77.3	22.6	8.2	91.4	26.8	76.8	22.5	8.5	88.2	25.9	75.7	22.2	9						
0.26	72	22.2	108.3	31.7	60.5	17.7	6.6	103.8	30.4	59.1	17.3	7.5	98.9	29	57.6	16.9	8.4	97.2	28.5	57.1	16.7	8.8	96.4	28.2	56.8	16.6	8.9						
2196	62	16.7	96	28.1	78	22.9	6.8	92.5	27.1	76.3	22.4	7.7	88.8	26	74.6	21.9	8.8	87.5	25.6	74.1	21.7	9.2	85	24.9	72.9	21.4	10						
1036	67	19.4	103.6	30.4	65.7	19.2	6.9	99.9	29.3	64.1	18.8	7.9	96.1	28.2	62.6	18.3	9	94.8	27.8	62	18.2	9.4	92.2	27	60.9	17.9	10.1						
0.09	72	22.2	111.8	32.8	53.3	15.6	7.2	107.8	31.6	51.8	15.2	8.1	103.7	30.4	50.2	14.7	9.3	102.3	30	49.7	14.6	9.6	99.5	29.2	48.7	14.3	10.3						
3600	62																																

# SKM Split Air Conditioners ACUM-L + CADX-L Series - R-22

## CAPACITY RATINGS

ACUML + CADXL	AFR		EWB		Condenser Entering Air Temperature																							
	cfm	l/s			95°F (35°C)			105°F (40.6°C)			115°F (46.1°C)			118.4°F (48°C)			125°F (51.7°C)											
	(BPF)	°F	°C	Total Capacity		Sensible Capacity		PI*	Total Capacity		Sensible Capacity		PI*	Total Capacity		Sensible Capacity		PI*	Total Capacity		Sensible Capacity		PI*					
				MBh	kW	MBh	kW		kW	MBh	kW	MBh		kW	kW	MBh	kW		MBh	kW	kW	MBh		kW	MBh	kW	kW	
130L + 150L	1514	67	19.4	125.7	36.8	82.4	24.1	8.4	121	35.5	80.5	23.6	9.6	116.1	34	78.6	23	10.9	114.4	33.5	77.9	22.8	11.4	111.1	32.6	76.7	22.5	12.2
	0.17	72	22.2	136	39.8	65.9	19.3	8.6	130.9	38.4	64.2	18.8	9.8	125.6	36.8	62.3	18.3	11.1	123.7	36.3	61.6	18.1	11.6	120.1	35.2	60.4	17.7	12.4
	4200	62	16.7	120.5	35.3	112.8	33.1	8.3	114.6	33.6	110.3	32.3	9.5	108.6	31.8	107.9	31.6	10.8	106.6	31.2	106.6	31.2	11.3	102.9	30.2	102.9	30.2	12.1
	1982	67	19.4	131.7	38.6	93.1	27.3	8.5	126.8	37.2	91.2	26.7	9.7	121.5	35.6	89.3	26.2	11.1	119.7	35.1	88.6	26	11.5	116.2	34	87.3	25.6	12.3
	0.2	72	22.2	142.3	41.7	72.7	21.3	8.8	136.8	40.1	70.9	20.8	10	130.8	38.3	68.9	20.2	11.3	128.7	37.7	68.2	20	11.7	124.8	36.6	67	19.6	12.5
	6417	62	16.7	124.6	36.5	124.6	36.5	8.4	119.1	34.9	119.1	34.9	9.6	113.4	33.2	113.4	33.2	10.9	111.5	32.7	111.5	32.7	11.3	107.8	31.6	107.8	31.6	12.2
	3028	67	19.4	139.9	41	114.4	33.5	8.7	134.4	39.4	112.5	33	9.9	127.6	37.4	110.1	32.3	11.2	125.2	36.7	109.3	32	11.6	120.6	35.4	107.7	31.6	12.4
0.26	72	22.2	150.4	44.1	86	25.2	8.9	144.2	42.3	84.1	24.6	10.1	-	-	-	-	-	-	-	-	-	-	-	-	-	-	-	-
145L + 150L	3208	62	16.7	124.8	36.6	102.5	30.1	9.5	119.7	35.1	100.3	29.4	10.8	114.2	33.5	97.8	28.7	12.2	112.4	32.9	97	28.4	12.6	108.9	31.9	95.5	28	13.5
	1514	67	19.4	134.4	39.4	85.9	25.2	9.8	129.3	37.9	83.8	24.6	11.1	123.9	36.3	81.7	23.9	12.4	122.1	35.8	80.9	23.7	12.8	118.6	34.8	79.6	23.3	13.7
	0.17	72	22.2	145.2	42.6	69.2	20.3	10	139.8	41	67.3	19.7	11.3	134	39.3	65.2	19.1	12.6	132	38.7	64.5	18.9	13.1	128.4	37.6	63.3	18.5	14
	4800	62	16.7	133.1	39	125.2	36.7	9.8	126.4	37.1	122.5	35.9	11	119.5	35	119.5	35	12.3	117.2	34.3	117.2	34.3	12.7	112.9	33.1	112.9	33.1	13.5
	2265	67	19.4	144.1	42.2	102.7	30.1	10	138.5	40.6	100.6	29.5	11.3	132.5	38.8	98.4	28.9	12.6	130.5	38.3	97.7	28.6	13.1	126.8	37.2	96.3	28.2	13.9
	0.22	72	22.2	155.2	45.5	79.8	23.4	10.1	149.1	43.7	77.9	22.8	11.5	142.6	41.8	75.7	22.2	13	140.4	41.1	75	22	13.4	136.4	40	73.7	21.6	14.3
	6417	62	16.7	135.7	39.8	135.7	39.8	9.8	129.1	37.8	129.1	37.8	11.1	122.5	35.9	122.5	35.9	12.4	120.3	35.3	120.3	35.3	12.8	116.2	34.1	116.2	34.1	13.6
3028	67	19.4	149.9	43.9	117.9	34.5	10.1	143.9	42.2	115.8	33.9	11.4	137.6	40.3	113.6	33.3	12.8	135.5	39.7	112.9	33.1	13.2	131.4	38.5	111.4	32.7	14.1	
0.26	72	22.2	160.9	47.2	89.3	26.2	10.1	154.3	45.2	87.2	26.6	11.5	147.4	43.2	85.1	24.9	13.2	145.1	42.5	84.3	24.7	13.7	140.9	41.3	83.1	24.3	14.5	
160L + 150L	3208	62	16.7	132	38.7	110.1	32.3	9.2	126.8	37.2	107.7	31.6	10.4	120.8	35.4	105	30.8	11.7	118.4	34.7	103.9	30.5	12.2	113.8	33.3	101.9	29.9	13
	1514	67	19.4	142.7	41.8	92.3	27.1	9.4	137.5	40.3	90.2	26.4	10.6	131.8	38.6	87.9	25.8	12	129.8	38	87.1	25.5	12.4	126.1	37	85.6	25.1	13.3
	0.09	72	22.2	154	45.1	74.3	21.8	9.6	148.4	43.5	72.3	21.2	10.8	142.3	41.7	70.1	20.5	12.2	140.2	41.1	69.3	20.3	12.7	136.1	39.9	67.9	19.9	13.6
	4800	62	16.7	139.6	40.9	135.6	39.8	9.4	133.3	39.1	133	39	10.6	126.7	37.1	126.7	37.1	11.9	124.5	36.5	124.5	36.5	12.3	120.3	35.2	120.3	35.2	13.2
	2265	67	19.4	154.9	45.4	112.4	32.9	9.6	149.1	43.7	110.2	32.3	10.8	142.7	41.8	107.8	31.6	12.2	140.5	41.2	106.9	31.3	12.7	135.5	39.7	105.1	30.8	13.6
	0.12	72	22.2	166.3	48.7	87	25.5	9.6	159.8	46.8	84.8	24.9	10.8	152.8	44.8	82.5	24.2	12.5	150.4	44.1	81.7	23.9	13	-	-	-	-	-
	6417	62	16.7	144.1	42.2	144.1	42.2	9.4	138	40.5	138	40.5	10.6	131.5	38.5	131.5	38.5	11.9	129.2	37.9	129.2	37.9	12.4	125	36.6	125	36.6	13.3
3028	67	19.4	161.8	47.4	130.3	38.2	9.6	154.2	45.2	127.6	37.4	10.8	146.1	42.8	124.8	36.6	12.3	143.5	42	123.9	36.3	12.8	138.5	40.6	122.1	35.8	13.7	
0.14	72	22.2	173.1	50.7	98.2	28.8	9.5	-	-	-	-	-	-	-	-	-	-	-	-	-	-	-	-	-	-	-	-	-
180L + 180L	4604	62	16.7	152.8	44.8	133.6	39.2	11	146.3	42.9	130.8	38.3	12.5	138.3	40.5	127.5	37.4	14.1	135.4	39.7	126.2	37	14.7	129.9	38.1	124	36.3	15.7
	2173	67	19.4	165.3	48.5	110.9	32.5	11.2	158.8	46.5	108.4	31.8	12.7	152	44.5	105.8	31	14.4	149.6	43.9	104.9	30.8	14.9	145.2	42.6	103.3	30.3	15.9
	0.19	72	22.2	178.7	52.4	88	25.8	11.5	171.8	50.4	85.6	25.1	13	164.6	48.2	83.1	24.4	14.6	162.1	47.5	82.3	24.1	15.2	157.2	46.1	80.7	23.6	16.1
	5800	62	16.7	157.9	46.3	150.2	44	11.1	149.6	43.8	146.7	43	12.5	141.1	41.3	141.1	41.3	14.2	138.3	40.5	138.3	40.5	14.7	133.1	39	133.1	39	15.8
	2737	67	19.4	171.8	50.4	123.3	36.1	11.3	165	48.4	120.8	35.4	12.9	157.8	46.3	118.2	34.6	14.5	155.4	45.6	117.3	34.4	15	150.7	44.2	115.6	33.9	16
	0.22	72	22.2	185.6	54.4	95.9	28.1	11.7	178.2	52.2	93.5	27.4	13.2	170.4	49.9	90.9	26.6	14.8	167.7	49.1	90	26.4	15.3	162.5	47.6	88.4	25.9	16.3
	7792	62	16.7	161	47.2	161	47.2	11.1	153.1	44.9	153.1	44.9	12.6	145.1	42.5	145.1	42.5	14.3	142.4	41.7	142.4	41.7	14.8	137.4	40.3	137.4	40.3	15.8
3677	67	19.4	179	52.5	142.1	41.6	11.5	171.8	50.3	139.6	40.9	13	164.3	48.1	136.9	40.1	14.6	161.6	47.4	136	39.9	15.2	155.7	45.6	133.9	39.3	16.1	
0.26	72	22.2	192.9	56.5	129.7	31.6	12.1	191.9	54.2	105.2	30.8	13.4	176.6	51.7	102.5	30.1	15	173.7	50.9	101.6	29.8	15.5	168.1	49.3	99.9	29.3	16.5	
205L + 180L	4604	62	16.7	166.3	48.7	139.5	40.9	12.1	160	46.9	136.8	40.1	13.7	153.3	44.9	133.8	39.2	15.6	151	44.3	132.8	38.9	16.3	146.5	42.9	130.9	38.4	17.4
	2173	67	19.4	179.1	52.5	116.3	34.1	12.3	172.8	50.6	113.8	33.3	14	166.1	48.7	111.2	32.6	15.8	163.7	48	110.3	32.3	16.4	159.2	46.7	108.5	31.8	17.5
	0.19	72	22.2	193.6	56.7	93.2	27.3	12.6	186.7	54.7	90.8	26.6	14.3	179.4	52.6	88.2	25.9	16.1	176.8	51.8	87.3	25.6	16.7	171.9	50.4	85.6	25.1	17.8
	6200	62	16.7	174.2	51.1	161.6	47.4	12.2	167.5	49.1	158.8	46.5	13.9	159.3	46.7	155.5	45.6	15.7	156.4	45.8	154.3	45.2	16.3	150.8	44.2	150.8	44.2	17.5
	2926	67	19.4	188.4	55.2	132.7	38.9	12.5	181.5	53.2	130.1	38.1	14.2	174.3	51.1	127.5	37.4	16	171.8	50.4	126.6	37.1	16.6	167	48.9	124.8	36.6	17.7
	0.22	72	22.2	203.3	59.6	103.6	30.4	12.8	195.7	57.4	101.1	29.6	14.5	187.6	55	98.4	28.9	16.3	184.7	54.1	97.5	28.6						

# SKM Split Air Conditioners

## ACUM-L + CADX-L Series - R-22

### CAPACITY RATINGS (ESMA APPROVED)

ACUM-L + CADX-L	AFR		EWB						Condenser Entering Air Temperature																				
	cfm	BPF	°F	°C	95°F (35°C)			105°F (40.6°C)			114.8°F (46°C)			118.4°F (48°C)			125°F (51.7°C)												
					Total Capacity	Sensible Capacity	PI*	Total Capacity	Sensible Capacity	PI*	Total Capacity	Sensible Capacity	PI*	Total Capacity	Sensible Capacity	PI*	Total Capacity	Sensible Capacity	PI*										
	MBh	kW	MBh	kW	kW	MBh	kW	MBh	kW	kW	MBh	kW	MBh	kW	kW	MBh	kW	MBh	kW	kW	MBh	kW	MBh	kW	kW				
050 G + 060 G	1146	62.0	16.7	46.5	13.6	44.6	13.1	3.3	44.5	13.1	43.7	12.8	3.7	42.6	12.5	42.6	12.5	4.1	41.8	12.3	41.8	12.3	4.3	40.5	11.9	40.5	11.9	4.6	
	541	66.2	19	50.9	14.9	39.6	11.6	3.3	49.1	14.4	38.9	11.4	3.7	47.2	13.8	38.1	11.2	4.2	46.5	13.6	37.8	11.1	4.4	44.9	13.2	37.2	10.9	4.7	
	0.07	72.0	22.2	55.7	16.3	32	9.4	3.4	53.8	15.8	31.3	9.2	3.8	51.6	15.1	30.5	8.9	4.3	50.8	14.9	30.2	8.9	4.5	49.3	14.5	29.7	8.7	4.8	
	1700	62.0	16.7	49.7	14.6	49.7	14.6	3.3	47.8	14	47.8	14	3.7	45.8	13.4	45.8	13.4	4.2	45.1	13.2	45.1	13.2	4.3	43.7	12.8	43.7	12.8	4.7	
	802	66.2	19	54.4	15.9	49.3	14.4	3.4	52	15.3	48.4	14.2	3.8	49.7	14.6	47.5	13.9	4.2	48.8	14.3	47.2	13.8	4.4	47.3	13.9	46.6	13.7	4.7	
	0.09	72.0	22.2	60.4	17.7	39	11.4	3.4	58.1	17	38.2	11.2	3.9	-	-	-	-	-	-	-	-	-	-	-	-	-	-	-	
	2292	62.0	16.7	52.3	15.3	52.3	15.3	3.3	50.3	14.7	50.3	14.7	3.8	50.2	14.7	50.2	14.7	4.3	49.4	14.5	49.4	14.5	4.4	47.8	14	47.8	14	4.7	
	1082	66.2	19	56.5	16.6	56.5	16.6	3.4	54.2	15.9	54.2	15.9	3.8	51.8	15.2	51.8	15.2	4.3	50.9	14.9	50.9	14.9	4.5	49.2	14.4	49.2	14.4	4.8	
	0.11	72.0	22.2	-	-	-	-	-	-	-	-	-	-	-	-	-	-	-	-	-	-	-	-	-	-	-	-	-	-
	1597	62.0	16.7	55.8	16.3	54.5	16	3.7	53.4	15.7	53.4	15.7	4.2	50.7	14.9	50.7	14.9	4.8	49.7	14.6	49.7	14.6	5	47.9	14	47.9	14	5.4	
754	66.2	19	60.2	17.7	47.9	14	3.8	58.3	17.1	47.1	13.8	4.3	55.9	16.4	46.2	13.5	4.8	55	16.1	45.9	13.4	5	53.4	15.6	45.2	13.3	5.4		
0.17	72.0	22.2	66.2	19.4	38.5	11.3	3.8	63.9	18.7	37.7	11.1	4.3	61.4	18	36.9	10.8	4.9	60.4	17.7	36.5	10.7	5.1	58.7	17.2	35.9	10.5	5.5		
2000	62.0	16.7	57.1	16.7	57.1	16.7	3.7	54.8	16.1	54.8	16.1	4.2	52.2	15.3	52.2	15.3	4.8	51.3	15	51.3	15	5	49.5	14.5	49.5	14.5	5.4		
944	66.2	19	62.8	18.4	53.9	15.8	3.8	60.7	17.8	53.1	15.6	4.3	58.2	17.1	52.2	15.3	4.9	57.2	16.8	51.8	15.2	5.1	55	16.1	51	14.9	5.5		
0.19	72.0	22.2	68.8	20.2	42.6	12.5	3.9	66.3	19.4	41.8	12.3	4.4	63.6	18.7	40.9	12	4.9	62.6	18.4	40.6	11.9	5.2	60.8	17.8	40	11.7	5.6		
3193	62.0	16.7	60.3	17.7	60.3	17.7	3.8	58.1	17	58.1	17	4.3	55.5	16.3	55.5	16.3	4.8	54.5	16	54.5	16	5	52.7	15.4	52.7	15.4	5.4		
1507	66.2	19	66.5	19.5	66.5	19.5	3.8	63.6	18.6	63.6	18.6	4.3	60.5	17.7	60.5	17.7	4.9	59.3	17.4	59.3	17.4	5.1	57.3	16.8	57.3	16.8	5.5		
0.26	72.0	22.2	73.2	21.5	53.4	15.6	3.9	70.2	20.6	52.4	15.4	4.4	67.3	19.7	51.6	15.1	5	66.3	19.4	51.2	15	5.3	-	-	-	-	-		
1597	62.0	16.7	65.1	19.1	61.3	18	4.5	62	18.2	59.8	17.5	5.1	58.8	17.2	58.4	17.1	5.7	57.8	16.9	57.8	16.9	6	55.5	16.3	55.5	16.3	6.4		
754	66.2	19	69.5	20.4	53.8	15.8	4.6	67	19.6	52.8	15.5	5.2	64.3	18.9	51.7	15.2	5.8	63.3	18.6	51.3	15	6.1	61.5	18	50.6	14.8	6.5		
0.09	72.0	22.2	76	22.3	43.5	12.7	4.7	73.4	21.5	42.5	12.5	5.3	70.5	20.7	41.5	12.2	5.9	69.4	20.4	41.1	12.1	6.2	67.5	19.8	40.4	11.8	6.6		
2400	62.0	16.7	68.5	20.1	68.5	20.1	4.6	65.7	19.3	65.7	19.3	5.1	62.7	18.4	62.7	18.4	5.8	61.6	18.1	61.6	18.1	6	59.6	17.5	59.6	17.5	6.5		
1133	66.2	19	75.7	22.2	67.5	19.8	4.7	72.6	21.3	66.3	19.4	5.3	68.9	20.2	65	19	5.9	67.5	19.8	64.4	18.9	6.1	65.1	19.1	63.6	18.6	6.6		
0.12	72.0	22.2	82.5	24.2	53	15.5	4.7	79.4	23.3	51.9	15.2	5.3	76.1	22.3	50.8	14.9	6	74.8	21.9	50.4	14.8	6.3	72.6	21.3	49.7	14.6	6.9		
3193	62.0	16.7	71.3	20.9	71.3	20.9	4.6	68.4	20.1	68.4	20.1	5.2	65.4	19.2	65.4	19.2	5.8	64.3	18.8	64.3	18.8	6.1	62.2	18.2	62.2	18.2	6.5		
1507	66.2	19	77.7	22.8	77.7	22.8	4.7	74.4	21.8	74.4	21.8	5.3	70.9	20.8	70.9	20.8	5.9	69.6	20.4	69.6	20.4	6.2	67.3	19.7	67.3	19.7	6.6		
0.14	72.0	22.2	86	25.2	61.2	17.9	4.7	82.7	24.2	60.2	17.6	5.3	-	-	-	-	-	-	-	-	-	-	-	-	-	-	-		
1719	62.0	16.7	74.1	21.7	67.8	19.9	5.3	70.5	20.7	66.2	19.4	6	66.4	19.5	64.3	18.8	6.9	64.9	19	63.6	18.6	7.2	62.3	18.3	62.3	18.3	7.7		
811	66.2	19	78.4	23	59.5	17.4	5.4	75.2	22.1	58.2	17	6.1	72.1	21.1	56.8	16.7	6.9	70.9	20.8	56.3	16.5	7.2	68.8	20.2	55.5	16.3	7.8		
0.09	72.0	22.2	85.8	25.2	48.3	14.2	5.5	82.6	24.2	47.1	13.8	6.3	79.3	23.2	45.9	13.5	7.1	78.1	22.9	45.4	13.3	7.4	75.8	22.2	44.6	13.1	7.9		
2800	62.0	16.7	78.7	23.1	78.7	23.1	5.4	75.2	22	75.2	22	6.1	71.5	21	71.5	21	6.9	70.2	20.6	70.2	20.6	7.2	67.8	19.9	67.8	19.9	7.8		
1321	66.2	19	87	25.5	77.8	22.8	5.5	83.4	24.5	76.4	22.4	6.3	78.9	23.1	74.8	21.9	7.1	77.3	22.7	74.1	21.7	7.3	74.5	21.8	73.1	21.4	7.8		
0.13	72.0	22.2	95.2	27.9	61.1	17.9	5.7	91.4	26.8	59.8	17.5	6.5	87.4	25.6	58.5	17.2	7.3	86	25.2	58.1	17	7.5	83.3	24.4	57.2	16.8	8		
3438	62.0	16.7	80.9	23.7	80.9	23.7	5.4	77.3	22.7	77.3	22.7	6.2	73.7	21.6	73.7	21.6	7	72.3	21.2	72.3	21.2	7.3	70	20.5	70	20.5	7.8		
1623	66.2	19	89.1	26.1	87.1	25.5	5.6	84.7	24.8	84.7	24.8	6.3	80.5	23.6	80.5	23.6	7.1	78.9	23.1	78.9	23.1	7.4	76.2	22.3	76.2	22.3	7.9		
0.14	72.0	22.2	98.2	28.8	67.7	19.9	5.8	94.2	27.6	66.5	19.5	6.5	90	26.4	65.1	19.1	7.3	88.5	25.9	64.6	18.9	7.6	-	-	-	-	-		
2196	62.0	16.7	85	24.9	82.2	24.1	6.1	81.1	23.8	80.4	23.6	7	77.2	22.6	77.2	22.6	7.9	75.8	22.2	75.8	22.2	8.2	73.3	21.5	73.3	21.5	8.8		
1036	66.2	19	91.8	26.9	72.5	21.2	6.3	88.4	25.9	71.1	20.8	7.1	85	24.9	69.7	20.4	8	83.7	24.5	69.2	20.3	8.3	81.3	23.8	68.2	20	8.8		
0.09	72.0	22.2	100.3	29.4	58.3	17.1	6.4	96.6	28.3	56.9	16.7	7.3	92.7	27.2	55.5	16.3	8.2	91.2	26.7	55	16.1	8.5	88.5	25.9	54.1	15.9	9.1		
3000	62.0	16.7	88.7	26	88.7	26	6.2	85	24.9	85	24.9	7	81.3	23.8	81.3	23.8	7.9	79.9	23.4	79.9	23.4	8.2	77.5	22.7	77.5	22.7	8.8		
1416	66.2	19	98	28.7	86.3	25.3	6.4	93.6	27.4	84.6	24.8	7.2	88.9	26.1	82.9	24.3	8.1	87.2	25.6	82.2	24.1	8.4	84.3	24.7	81.1	23.8	8.9		
0.11	72.0	22.2	106.6	31.3	67.8	19.9	6.6	102.3	30	66.3	19.4	7.5	97.7	28.6	64.8	19	8.4	95.9	28.1	64.2	18.8	8.8	92.9	27.2	63.2	18.5	9.3		
4392	62.0	16.7	93.6	27.4	93.6	27.4	6.3	89.8	26.3	89.8	26.3	7.1	86	25.2	86	25.2	8	84.6	24.8	84.6	24.8	8.3	85.3	25	85.3	25	8.9		
2073	66.2	19	101.4	29.7	101.4	29.7	6.5	96.9	28.4	96.9	28.4	7.3	92.5	27.1	92.5	27.1	8.2	90.9	26.6	90.9	26.6	8.5	87.9	25.8	87.9	25.8	9		
0.14	72.0	22.2	112.5	33	82.4	24.1	6.7	-	-	-	-	-	-	-	-	-	-	-	-	-	-	-	-	-	-	-	-		
2196	62.0	16.7	94.9	27.8	88.6	26	7.1	90.4	26.5	86.5	25.4	8.1	86.2	25.3	84.6	24.8	9.3	84.6	24.8	83.9	24.6	9.7	81.8	24	81.8	24	10.4		
1036	66.2	19	101.7	29.8	78.2	22.9	7.3	98	28.7	76.6	22.4	8.3	94.2	27.6	75	22	9.5	92.7	27.2	74.4	21.8	9.9	90.1	26.4	73.3	21.5	10.5		
0.05	72.0	22.2	111	32.5	63.3	18.5	7.6	106.9	31.3	61.7	18.1	8.7	102.7	30.1	60.2	17.6	9.8	101.2	29.7	59.6	17.5	10.2	98.4	28.8	58.6	17.2	10.8		
3600	62.0	16.7	102.3	30	102.3	30	7.3	98	28.7	98	28.7	8.																	

# SKM Split Air Conditioners ACUM-L + CADX-L Series - R-22

## CAPACITY RATINGS (ESMA APPROVED)

ACUM-L + CADX-L	AFR cfm l/s	EWB		Condenser Entering Air Temperature																													
				95°F (35°C)						105°F (40.6°C)						114.8°F (46°C)						118.4°F (48°C)						125°F (51.7°C)					
				Total Capacity		Sensible Capacity		PI*	Total Capacity		Sensible Capacity		PI*	Total Capacity		Sensible Capacity		PI*	Total Capacity		Sensible Capacity		PI*	Total Capacity		Sensible Capacity		PI*					
(BPF)	°F	°C	MBh	kW	MBh	kW	kW	MBh	kW	MBh	kW	kW	MBh	kW	MBh	kW	kW	MBh	kW	MBh	kW	kW	MBh	kW	MBh	kW	kW						
130 G + 150 G	3208	62.0	16.7	118.4	34.7	117.5	34.4	7.9	113.2	33.2	113.2	33.2	8.9	107.9	31.6	107.9	31.6	10.2	105.9	31	105.9	31	10.7	102.4	30	102.4	30	11.6					
	1514	66.2	19	129.4	37.9	104	30.5	8	124.8	36.6	102.1	29.9	9.1	119.9	35.1	100.1	29.3	10.4	118.1	34.6	99.4	29.1	10.8	114.2	33.5	97.9	28.7	11.7					
	0.09	72.0	22.2	141.9	41.6	83.5	24.5	8.2	136.9	40.1	81.7	23.9	9.3	131.5	38.5	79.8	23.4	10.6	129.4	37.9	79	23.2	11	125.5	36.8	77.7	22.8	11.9					
	4200	62.0	16.7	123.4	36.2	123.4	36.2	7.9	118.4	34.7	118.4	34.7	9	113.2	33.2	113.2	33.2	10.3	111.3	32.6	111.3	32.6	10.7	107.8	31.6	107.8	31.6	11.6					
	1982	66.2	19	137	40.1	121.1	35.5	8.1	130.6	38.3	118.7	34.8	9.2	124.2	36.4	116.3	34.1	10.4	121.9	35.7	115.4	33.8	10.9	117.7	34.5	113.8	33.4	11.7					
	0.11	72.0	22.2	150	44	95.4	28	8.3	144.4	42.3	93.5	27.4	9.4	138.2	40.5	91.4	26.8	10.7	135.9	39.8	90.7	26.6	11.2	131.5	38.5	89.2	26.2	12.1					
	6417	62.0	16.7	131.6	38.6	131.6	38.6	8	126.4	37.1	126.4	37.1	9.1	121	35.5	121	35.5	10.4	124.2	36.4	124.2	36.4	10.9	120.2	35.2	120.2	35.2	11.8					
	3028	66.2	19	142.7	41.8	142.7	41.8	8.2	136.8	40.1	136.8	40.1	9.3	130.7	38.3	130.7	38.3	10.5	128.4	37.6	128.4	37.6	11	124.1	36.4	124.1	36.4	11.9					
	0.14	72.0	22.2	-	-	-	-	-	-	-	-	-	-	-	-	-	-	-	-	-	-	-	-	-	-	-	-	-	-				
	3208	62.0	16.7	129.8	38	122.6	35.9	9.1	123.5	36.2	119.8	35.1	10.2	117.1	34.3	116.9	34.3	11.5	114.8	33.7	114.8	33.7	12	110.7	32.4	110.7	32.4	12.9					
1514	66.2	19	138.8	40.7	107.8	31.6	9.3	133.8	39.2	105.8	31	10.5	128.4	37.6	103.5	30.3	11.8	126.4	37	102.7	30.1	12.2	122.7	36	101.2	29.7	13.1						
0.09	72.0	22.2	151.8	44.5	87	25.5	9.5	146.5	42.9	85.1	24.9	10.7	140.7	41.2	83	24.3	12	138.5	40.6	82.2	24.1	12.5	134.5	39.4	80.9	23.7	13.4						
4800	62.0	16.7	136.6	40	136.6	40	9.2	130.9	38.4	130.9	38.4	10.4	125	36.6	125	36.6	11.7	122.8	36	122.8	36	12.2	118.8	34.8	118.8	34.8	13						
2265	66.2	19	151.1	44.3	135	39.6	9.5	144.4	42.3	132.5	38.8	10.6	137.1	40.2	129.7	38	11.9	134.4	39.4	128.7	37.7	12.4	129.7	38	126.9	37.2	13.3						
0.12	72.0	22.2	164.5	48.2	105.8	31	9.5	158.3	46.4	103.7	30.4	10.7	151.5	44.4	101.5	29.7	12.2	149	43.7	100.7	29.5	12.8	144.5	42.4	99.2	29.1	13.9						
6417	62.0	16.7	142.2	41.7	142.2	41.7	9.3	136.5	40	136.5	40	10.5	130.4	38.2	130.4	38.2	11.8	128.2	37.6	128.2	37.6	12.3	124.1	36.4	124.1	36.4	13.1						
3028	66.2	19	154.9	45.4	154.9	45.4	9.5	148.1	43.4	148.1	43.4	10.7	141.2	41.4	141.2	41.4	12	138.6	40.6	138.6	40.6	12.5	134.1	39.3	134.1	39.3	13.4						
0.14	72.0	22.2	172.0	50.3	122.6	35.9	9.4	164.7	48.3	120.5	35.3	10.7	-	-	-	-	-	-	-	-	-	-	-	-	-	-	-	-					
180 G + 180 G	4604	62.0	16.7	154.3	45.2	154.3	45.2	10.9	147	43.1	147	43.1	12.4	139.6	40.9	139.6	40.9	14	136.9	40.1	136.9	40.1	14.6	132.2	38.7	132.2	38.7	15.6					
	2173	66.2	19	169.4	49.7	141.2	41.4	11.2	162.7	47.7	138.6	40.6	12.7	155.4	45.5	135.7	39.8	14.3	152.1	44.6	134.4	39.4	14.8	146.3	42.9	132.2	38.7	15.8					
	0.1	72.0	22.2	185.5	54.4	112.4	33	11.5	178.2	52.2	109.9	32.2	13	170.6	50	107.3	31.4	14.6	167.7	49.2	106.3	31.2	15.2	162.6	47.6	104.5	30.6	16.1					
	5800	62.0	16.7	159.7	46.8	159.7	46.8	11	152.6	44.7	152.6	44.7	12.5	145.3	42.6	145.3	42.6	14.1	142.6	41.8	142.6	41.8	14.7	137.9	40.4	137.9	40.4	15.7					
	2737	66.2	19	176.5	51.7	160.9	47.1	11.3	167.6	49.1	157.5	46.2	12.8	159	46.6	154.3	45.2	14.3	155.9	45.7	153.1	44.9	14.9	150.5	44.1	150.5	44.1	15.9					
	0.12	72.0	22.2	193.7	56.8	126.2	37	11.7	185.8	54.5	123.5	36.2	13.2	177.6	52	120.9	35.4	14.8	174.5	51.1	119.9	35.1	15.4	168.9	49.5	118	34.6	16.4					
	7792	62.0	16.7	166.6	48.8	166.6	48.8	11.1	159.4	46.7	159.4	46.7	12.6	152	44.5	152	44.5	14.2	149.3	43.8	149.3	43.8	14.8	151	44.2	151	44.2	15.9					
	3677	66.2	19	181.1	53.1	181.1	53.1	11.4	172.8	50.6	172.8	50.6	12.9	164.6	48.2	164.6	48.2	14.5	161.6	47.4	161.6	47.4	15	156.1	45.8	156.1	45.8	16					
	0.14	72.0	22.2	202.5	59.4	147	43.1	12	-	-	-	-	-	-	-	-	-	-	-	-	-	-	-	-	-	-	-	-	-				
	4604	62.0	16.7	168.8	49.5	166.4	48.8	12.4	160.9	47.1	160.9	47.1	14.1	153.1	44.9	153.1	44.9	15.9	150.3	44.1	150.3	44.1	16.6	145.4	42.6	145.4	42.6	17.7					
2173	66.2	19	182	53.3	146.3	42.9	12.7	175.3	51.4	143.6	42.1	14.8	168.4	49.4	140.8	41.3	16.2	165.8	48.6	139.8	41	16.8	161.2	47.2	138	40.4	17.9						
0.1	72.0	22.2	198.8	58.3	117.1	34.3	13.1	191.4	56.1	114.5	33.6	14.4	183.6	53.8	111.8	32.8	16.6	180.7	53	110.8	32.5	17.2	175.4	51.4	108.9	31.9	18.3						
6200	62.0	16.7	175.1	51.3	175.1	51.3	12.6	167.7	49.1	167.7	49.1	14.3	160.3	47	160.3	47	16	157.6	46.2	157.6	46.2	16.7	152.7	44.8	152.7	44.8	17.8						
2926	66.2	19	193.1	56.6	172.7	50.6	13	185.2	54.3	169.7	49.8	14.6	175.8	51.5	166.2	48.7	16.3	172.4	50.5	165	48.3	16.9	166.5	48.8	162.7	47.7	18						
0.12	72.0	22.2	210.2	61.6	135.3	39.7	13.4	201.6	59.1	132.4	38.8	15.1	192.6	56.4	129.5	38	17	189.2	55.5	128.4	37.6	17.7	183.3	53.7	126.5	37.1	18.8						
7792	62.0	16.7	180.5	52.9	180.5	52.9	12.7	173	50.7	173	50.7	14.4	165.5	48.5	165.5	48.5	16.1	162.8	47.7	162.8	47.7	16.8	157.8	46.3	157.8	46.3	17.8						
3677	66.2	19	197.6	57.9	195.9	57.4	13.1	188.3	55.2	188.3	55.2	14.7	179.3	52.6	179.3	52.6	16.4	176.1	51.6	176.1	51.6	17	170.3	49.9	170.3	49.9	18.1						
0.14	72.0	22.2	217.1	63.6	151.7	44.5	13.5	207.7	60.9	148.7	43.6	15.4	197.8	58	145.6	42.7	17.4	-	-	-	-	-	-	-	-	-	-	-					
6292	62.0	16.7	211.3	61.9	211.3	61.9	14.4	202.5	59.3	202.5	59.3	16.5	193.2	56.6	193.2	56.6	18.8	189.8	55.6	189.8	55.6	19.5	183.8	53.9	183.8	53.9	20.9						
2969	66.2	19	233.5	68.4	198.8	58.3	14.9	222.3	65.1	194.3	57	16.9	211.1	61.9	189.9	55.7	19	207.1	60.7	188.4	55.2	19.8	200.1	58.6	185.7	54.4	21.1						
0.06	72.0	22.2	253.9	74.4	157.2	46.1	15.3	244	71.5	153.7	45.1	17.4	233.8	68.5	150.2	44	19.6	230.1	67.4	149	43.7	20.4	223.5	65.5	146.7	43	21.8						
8000	62.0	16.7	220.6	64.6	220.6	64.6	14.6	211.5	62	211.5	62	16.6	202.1	59.2	202.1	59.2	18.8	198.6	58.2	198.6	58.2	19.6	192.4	56.4	192.4	56.4	21						
3776	66.2	19	239.2	70.1	227.6	66.7	15	228.7	67	223.7	65.6	17	218.1	63.9	218.1	63.9	19.1	214.3	62.8	214.3	62.8	19.9	207.5	60.8	207.5	60.8							



# SKM Split Air Conditioners ACUM-L + CADX-L Series - R-22

## Fan Performance

Model ACUML + CADXL	AirFlowRate		Internal Static Pressure		External Static Pressure - in.wg(Pa)														RPM Range
					0.2(50)		0.4(100)		0.5(125)		0.6(150)		0.8(200)		1.0(250)		1.25(313)		
	cfm	l/s	in.wg	Pa	RPM	kW	RPM	kW	RPM	kW	RPM	kW	RPM	kW	RPM	kW	RPM	kW	
050L + 050L	1146	541	0.24	59.7	602	0.1	731	0.14	793	0.17	-	-	-	-	-	-	-	-	
	1700	802	0.51	127.8	777	0.27	869	0.32	914	0.35	958	0.38	1044	0.44	1128	0.51	1233	0.6	
	2292	1082	0.96	239.3	1000	0.62	1071	0.69	1105	0.72	1139	0.76	1205	0.83	1271	0.91	1351	1.01	
060L + 060L	1597	754	0.24	59.75	630	0.18	736	0.23	785	0.25	833	0.28	926	0.33	1017	0.39	1129	0.47	
	2000	944	0.36	90.18	731	0.31	821	0.37	863	0.4	905	0.43	984	0.5	1060	0.56	1153	0.65	
	3193	1507	0.96	239.18	1085	1.15	1145	1.24	1175	1.29	1204	1.34	1261	1.43	1315	1.53	1382	1.65	
070L + 070L	1597	754	0.24	59.75	630	0.18	736	0.23	785	0.25	833	0.28	926	0.33	1017	0.39	1129	0.47	
	2400	1133	0.53	131.35	844	0.51	922	0.58	960	0.62	996	0.66	1066	0.73	1133	0.8	1214	0.9	
	3193	1507	0.96	239.18	1085	1.15	1145	1.24	1175	1.29	1204	1.34	1261	1.43	1315	1.53	1382	1.65	
085L + 085L	1719	811	0.24	59.73	-	-	642	0.22	690	0.25	736	0.28	826	0.35	-	-	-	-	
	2800	1321	0.62	155.66	760	0.57	831	0.66	865	0.7	899	0.74	962	0.83	1024	0.93	1098	1.05	
	3438	1622	0.96	239.26	908	1.01	968	1.12	997	1.17	1025	1.22	1080	1.33	1133	1.44	1198	1.58	
100L + 100L	2196	1036	0.24	59.71	-	-	656	0.32	699	0.35	740	0.39	818	0.46	893	0.54	982	0.64	
	3000	1416	0.43	107.54	700	0.55	774	0.65	809	0.69	843	0.74	908	0.83	970	0.93	1045	1.05	
	4392	2073	0.96	239.14	973	1.6	1026	1.74	1052	1.8	1077	1.87	1127	2.01	1176	2.15	1234	2.32	
110L + 120L	2196	1036	0.28	69.69	-	-	674	0.33	716	0.37	756	0.4	834	0.48	907	0.55	996	0.66	
	3600	1699	0.74	185.52	851	0.97	913	1.09	942	1.14	972	1.2	1028	1.31	1082	1.42	1148	1.56	
	4392	2073	1.13	282.67	1019	1.72	1071	1.86	1096	1.92	1121	1.99	1170	2.13	1217	2.27	1274	2.44	
120L + 120L	2196	1036	0.28	69.69	-	-	674	0.33	716	0.37	756	0.4	834	0.48	907	0.55	996	0.66	
	3600	1699	0.74	185.52	851	0.97	913	1.09	942	1.14	972	1.2	1028	1.31	1082	1.42	1148	1.56	
	4392	2073	1.13	282.67	1019	1.72	1071	1.86	1096	1.92	1121	1.99	1170	2.13	1217	2.27	1274	2.44	
130L + 150L	3208	1514	0.24	59.71	472	0.35	549	0.45	585	0.5	619	0.55	683	0.65	744	0.76	817	0.92	
	4200	1982	0.4	98.55	568	0.7	632	0.82	662	0.88	691	0.94	746	1.06	799	1.2	862	1.37	
	6417	3028	0.96	239.21	816	2.29	861	2.46	882	2.55	904	2.64	946	2.82	986	3.0	1035	3.24	
145L + 150L	3208	1514	0.24	59.71	472	0.35	549	0.45	585	0.5	619	0.55	683	0.65	744	0.76	817	0.92	
	4800	2265	0.52	130.04	632	1	690	1.14	717	1.21	744	1.27	795	1.42	844	1.56	903	1.75	
	6417	3028	0.96	239.21	816	2.29	861	2.46	882	2.55	904	2.64	946	2.82	986	3.0	1035	3.24	
160L + 150L	3208	1514	0.28	69.69	489	0.37	564	0.47	599	0.52	632	0.57	696	0.67	756	0.79	829	0.94	
	4800	2265	0.61	152.71	659	1.06	715	1.2	741	1.27	767	1.34	817	1.48	865	1.63	924	1.82	
	6417	3028	1.14	282.75	855	2.44	898	2.62	920	2.71	940	2.8	981	2.98	1020	3.2	1068	3.41	
180L + 180L	4604	2173	0.29	71.1	621	0.62	714	0.78	758	0.86	799	0.93	879	1.09	955	1.26	1045	1.49	
	5800	2737	0.46	114.71	739	1.14	817	1.34	854	1.43	890	1.53	959	1.72	1025	1.92	1103	2.18	
	7792	3677	0.87	215.67	954	2.6	1015	2.86	1044	2.99	1073	3.12	1129	3.39	1183	3.65	1249	3.97	
205L + 180L	4604	2173	0.29	71.1	621	0.62	714	0.78	758	0.86	799	0.93	879	1.09	955	1.26	1045	1.49	
	6200	2926	0.53	132.42	781	1.37	855	1.58	891	1.68	925	1.79	991	1.99	1054	2.2	1129	2.47	
	7792	3677	0.87	215.67	954	2.6	1015	2.86	1044	2.99	1073	3.12	1129	3.39	1183	3.65	1249	3.97	
240L + 240L	6292	2969	0.29	71.09	513	0.77	593	0.98	629	1.08	665	1.19	732	1.42	796	1.67	873	2	
	8000	3775	0.47	117	614	1.45	680	1.7	712	1.83	742	1.96	800	2.22	855	2.5	921	2.87	
	10649	5025	0.87	215.67	785	3.23	837	3.55	863	3.72	887	3.88	935	4.22	981	4.56	-	-	
260L + 240L	6292	2969	0.29	71.09	513	0.77	593	0.98	629	1.08	665	1.19	732	1.42	796	1.67	873	2	
	8000	3775	0.47	117	614	1.45	680	1.7	712	1.83	742	1.96	800	2.22	855	2.5	921	2.87	
	10649	5025	0.87	215.67	785	3.23	837	3.55	863	3.72	887	3.88	935	4.22	981	4.56	-	-	

Table 10

### Notes:

1. Areas shaded in blue indicate factory setting of rpm.
2. Areas shaded in gray indicate operating range outside the standard motor. Shift one step larger motor size in this area.
3. Internal static pressure is based on pressure drops through evaporator coil, fan casing & 1" washable flate filter.
4. The shown rpm range is with standard pulleys combination.

# SKM Split Air Conditioners ACUM-L + CADX-L Series - R-22

## Fan Performance (ESMA APPROVED)

Model ACUML G + CADXL G	AirFlowRate		Internal Static Pressure		External Static Pressure - in.wg(Pa)													
					0.2(50)		0.4(100)		0.5(125)		0.6(150)		0.8(200)		1(250)		1.2(300)	
	cfm	l/s	in.wg	Pa	RPM	kW	RPM	kW	RPM	kW	RPM	kW	RPM	kW	RPM	kW	RPM	kW
050L G + 060L G	1146	541	0.19	47.2	0	0	699	0.13	762	0.16	824	0.18	-	-	-	-	-	-
	1700	802	0.31	77.56	678	0.22	777	0.27	823	0.3	868	0.32	957	0.38	1043	0.44	1128	0.51
	2292	1082	0.56	139.95	847	0.48	-	-	-	-	-	-	-	-	-	-	-	-
060L G + 060L G	1597	754	0.24	59.75	630	0.18	736	0.23	785	0.25	833	0.28	926	0.33	1017	0.39	1107	0.46
	2000	944	0.36	90.18	731	0.31	821	0.37	863	0.4	905	0.43	984	0.5	1060	0.56	-	-
	3193	1507	0.96	239.18	-	-	-	-	-	-	-	-	-	-	-	-	-	-
070L G + 070L G	1597	754	0.28	69.73	652	0.19	756	0.24	804	0.26	852	0.29	945	0.34	1035	0.4	1125	0.47
	2400	1133	0.62	154.27	881	0.54	957	0.62	993	0.65	1028	0.69	-	-	-	-	-	-
	3193	1507	1.13	282.71	-	-	-	-	-	-	-	-	-	-	-	-	-	-
085L G + 100L G	1719	811	0.28	69.71	-	-	661	0.23	708	0.26	754	0.3	843	0.37	-	-	-	-
	2800	1321	0.73	183.08	800	0.62	869	0.7	902	0.75	934	0.79	997	0.88	1057	0.98	1115	1.07
	3438	1622	1.14	282.81	960	1.1	-	-	-	-	-	-	-	-	-	-	-	-
100L G + 100L G	2196	1036	0.28	69.69	-	-	674	0.33	716	0.37	756	0.4	834	0.48	907	0.55	979	0.64
	3000	1416	0.51	126.11	728	0.59	800	0.68	834	0.73	868	0.77	932	0.87	993	0.96	1052	1.06
	4392	2073	1.13	282.67	-	-	-	-	-	-	-	-	-	-	-	-	-	-
110L G + 120L G	2196	1036	0.32	79.66	602	0.28	691	0.35	732	0.38	772	0.42	849	0.49	922	0.57	993	0.66
	3600	1699	0.86	213.33	886	1.04	946	1.15	975	1.21	1003	1.26	1059	1.37	1112	1.49	-	-
	4392	2073	1.31	326.2	-	-	-	-	-	-	-	-	-	-	-	-	-	-
120L G + 120L G	2196	1036	0.32	79.66	602	0.28	691	0.35	732	0.38	772	0.42	849	0.49	922	0.57	993	0.66
	3600	1699	0.86	213.33	886	1.04	946	1.15	975	1.21	1003	1.26	1059	1.37	1112	1.49	-	-
	4392	2073	1.31	326.2	-	-	-	-	-	-	-	-	-	-	-	-	-	-
130L G + 150L G	3208	1514	0.28	69.69	489	0.37	564	0.47	599	0.52	632	0.57	696	0.67	756	0.79	814	0.91
	4200	1982	0.46	115.49	590	0.74	652	0.86	682	0.92	710	0.98	765	1.11	816	1.24	866	1.38
	6417	3028	1.14	282.75	-	-	-	-	-	-	-	-	-	-	-	-	-	-
160L G + 150L G	3208	1514	0.28	69.69	489	0.37	564	0.47	599	0.52	632	0.57	696	0.67	756	0.79	814	0.91
	4800	2265	0.61	152.71	659	1.06	715	1.2	741	1.27	767	1.34	817	1.48	-	-	-	-
	6417	3028	1.14	282.75	-	-	-	-	-	-	-	-	-	-	-	-	-	-
180L G + 180L G	4604	2173	0.34	84.79	648	0.67	738	0.82	781	0.9	822	0.98	900	1.14	975	1.31	1047	1.5
	5800	2737	0.55	137.14	775	1.23	851	1.42	887	1.52	922	1.62	989	1.81	1054	2.01	1116	2.22
	7792	3677	1.04	259.21	-	-	-	-	-	-	-	-	-	-	-	-	-	-
205L G + 180L G	4604	2173	0.34	84.79	648	0.67	738	0.82	781	0.9	822	0.98	900	1.14	975	1.31	1047	1.5
	6200	2926	0.64	158.44	820	1.48	892	1.69	926	1.79	960	1.89	1024	2.1	-	-	-	-
	7792	3677	1.04	259.21	-	-	-	-	-	-	-	-	-	-	-	-	-	-
240L G + 240L G	6292	2969	0.4	98.48	558	0.88	633	1.09	668	1.2	702	1.32	767	1.55	830	1.81	891	2.09
	8000	3775	0.65	162.78	675	1.68	737	1.94	767	2.07	796	2.2	-	-	-	-	-	-
	10649	5025	1.22	302.75	-	-	-	-	-	-	-	-	-	-	-	-	-	-
260L G + 240L G	6292	2969	0.4	98.48	558	0.88	633	1.09	668	1.2	702	1.32	767	1.55	830	1.81	891	2.09
	8000	3775	0.65	162.78	675	1.68	737	1.94	767	2.07	796	2.2	-	-	-	-	-	-
	10649	5025	1.22	302.75	-	-	-	-	-	-	-	-	-	-	-	-	-	-

Table 11

### Notes:

1. Areas shaded in blue indicate factory setting of rpm.
2. Areas shaded in grey indicate operating range outside the standard motor.
3. Internal static pressure is based on pressure drops through evaporator coil, fan casing & 1" washable flate filter.

# SKM Split Air Conditioners ACUM-L + CADX-L Series - R-22

## ELECTRICAL DATA

Power Supply: 380~415V/3Ph/50Hz

Model ACUM-	Unit Characteristic			Compressor			Condenser Fan Motor			Model CADX-	Evaporator Fan Motor	
	MFA	MCA	ICF	QTY	RLA	LRA	QTY	FLA	LRA		FLA	LRA
050L	25	13	67	1	8	62	1	1.1	3.3	050L	1.5	5.7
060L	32	16	81	1	10	74	1	1.9	5.8	060L	1.5	5.7
070L	32	19	109	1	12	101	1	1.9	5.8	070L	1.9	7.9
085L	50	25	103	1	16	95	1	1.9	5.8	085L	2.6	12.0
100L	50	26	119	1	17	111	1	1.9	5.8	100L	2.6	12.0
110L	40	28	84	1 + 1	10 + 10	66 + 66	2	1.1	3.3	120L	3.5	18.3
120L	40	29	94	1 + 1	10 + 10	74 + 74	2	1.5	4.5	120L	3.5	18.3
130L	40	29	94	1 + 1	10 + 10	74 + 74	2	1.5	4.5	150L	3.5	18.3
145L	50	34	123	1 + 1	12 + 12	101 + 101	2	1.5	4.5	150L	3.5	18.3
160L	50	34	124	1 + 1	12 + 12	101 + 101	2	1.9	5.8	150L	3.5	18.3
180L	63	45	124	1 + 1	16 + 16	95 + 95	2	1.9	5.8	180L	4.9	25.0
205L	80	49	147	1 + 1	17 + 17	111 + 111	2	2.8	11.0	180L	4.9	25.0
240L	80	53	156	1 + 1	19 + 19	118 + 118	2	2.8	11.0	240L	4.9	25.0
260L	100	60	159	1 + 1	22 + 22	118 + 118	2	2.8	11.0	240L	4.9	25.0

Table 12

Power Supply: 440V/3Ph/50Hz

Model ACUM-	Unit Characteristic			Compressor			Condenser Fan Motor			Model CADX-	Evaporator Fan Motor	
	MFA	MCA	ICF	QTY	RLA	LRA	QTY	FLA	LRA		FLA	LRA
050L	25	12	67	1	8	62	1	1.1	3.3	050L	1.3	5.2
060L	32	16	81	1	10	74	1	1.9	5.8	060L	1.3	5.2
070L	32	19	109	1	12	101	1	1.9	5.8	070L	1.7	7.2
085L	50	24	103	1	16	95	1	1.9	5.8	085L	2.4	10.9
100L	50	26	119	1	17	111	1	1.9	5.8	100L	2.4	10.9
110L	40	28	84	1 + 1	10 + 10	66 + 66	2	1.1	3.3	120L	3.1	16.6
120L	40	29	93	1 + 1	10 + 10	74 + 74	2	1.5	4.5	120L	3.1	16.6
130L	40	29	93	1 + 1	10 + 10	74 + 74	2	1.5	4.5	150L	3.1	16.6
145L	50	33	122	1 + 1	12 + 12	101 + 101	2	1.5	4.5	150L	3.1	16.6
160L	50	34	124	1 + 1	12 + 12	101 + 101	2	1.9	5.8	150L	3.1	16.6
180L	63	44	123	1 + 1	16 + 16	95 + 95	2	1.9	5.8	180L	4.5	23.0
205L	80	49	146	1 + 1	17 + 17	111 + 111	2	3.1	9.9	180L	4.5	23.0
240L	80	53	155	1 + 1	19 + 19	118 + 118	2	3.1	9.9	240L	4.5	23.0
260L	100	60	158	1 + 1	22 + 22	118 + 118	2	3.1	9.9	240L	4.5	23.0

Table 13

### Legend

**MFA** Maximum Fuse Amps (for fuse/circuit breaker sizing), complies with NEC Article 440-22 & 430-52.

**MCA** Minimum Circuit Amps.(for wire sizing), complies with NEC article 440-33.

### Note :

Voltage imbalance not to exceed  $\pm 2\%$  of the rated voltage

**ICF** Maximum Instantaneous Current Flow  
**RLA** Rated Load Amps. (at worst operating condition)  
**LRA** Locked Rotor Amps  
**FLA** Full Load Amps

# SKM Split Air Conditioners ACUM-L + CADX-L Series - R-22

## ELECTRICAL DATA (ESMA APPROVED)

POWER SUPPLY: 380-415V/3Ph/50Hz

Model ACUM- G	Unit Characteristic			Compressor			Condenser Fan Motor			Model CADX- G	Evaporator Fan Motor	
	MFA	MCA	ICF	QTY	RLA	LRA	QTY	FLA	LRA		FLA	LRA
050L G	25	13	68	1	8	62	1	1.5	4.5	060L G	1.5	5.7
060L G	32	15	80	1	10	74	1	1.3	4.0	060L G	1.5	5.7
070L G	32	18	107	1	12	101	1	1.3	4.0	070L G	1.9	7.9
085L G	40	24	102	1	16	95	1	1.3	4.0	100L G	2.6	12.0
100L G	50	25	118	1	17	111	1	1.3	4.0	100L G	2.6	12.0
110L G	40	29	86	1 + 1	10 + 10	66 + 66	2	1.5	4.5	120L G	3.5	18.3
120L G	40	29	94	1 + 1	10 + 10	74 + 74	2	1.5	4.5	120L G	3.5	18.3
130L G	40	29	93	1 + 1	10 + 10	74 + 74	2	1.3	4.0	150L G	3.5	18.3
160L G	50	33	122	1 + 1	12 + 12	101 + 101	2	1.3	4.0	150L G	3.5	18.3
180L G	63	43	121	1 + 1	16 + 16	95 + 95	2	1.3	4.0	180L G	4.9	25.0
205L G	63	46	138	1 + 1	17 + 17	111 + 111	2	1.3	4.0	180L G	4.9	25.0
240L G	80	53	156	1 + 1	19 + 19	118 + 118	2	2.8	11.0	240L G	4.9	25.0
260L G	100	60	159	1 + 1	22 + 22	118 + 118	2	2.8	11.0	240L G	4.9	25.0

Table 14

### Legend

**MFA** Maximum Fuse Amps (for fuse/circuit breaker sizing), complies with NEC Article 440-22 & 430-52.

**MCA** Minimum Circuit Amps.(for wire sizing), complies with NEC article 440-33.

**ICF** Maximum Instantaneous Current Flow

**RLA** Rated Load Amps. (at worst operating condition)

**LRA** Locked Rotor Amps

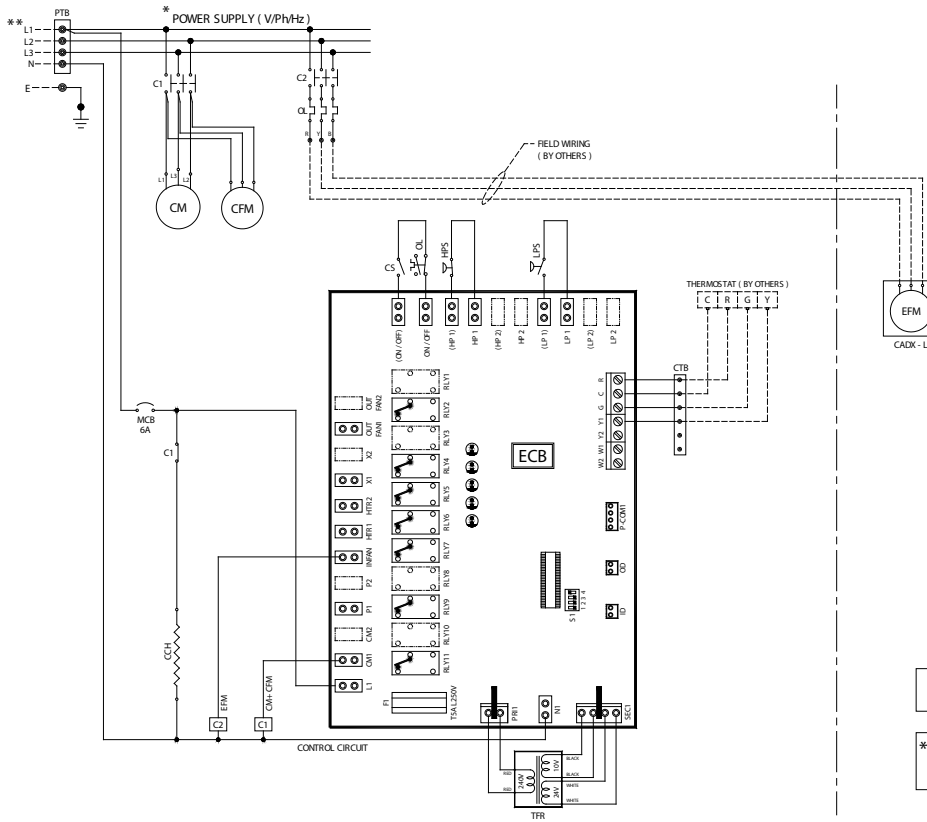
**FLA** Full Load Amps

### Note :

Voltage imbalance not to exceed  $\pm 2\%$  of the rated voltage

# SKM Split Air Conditioners ACUM-L + CADX-L Series - R-22

## Typical Wiring Diagram ACUM Models: 050L - 100L



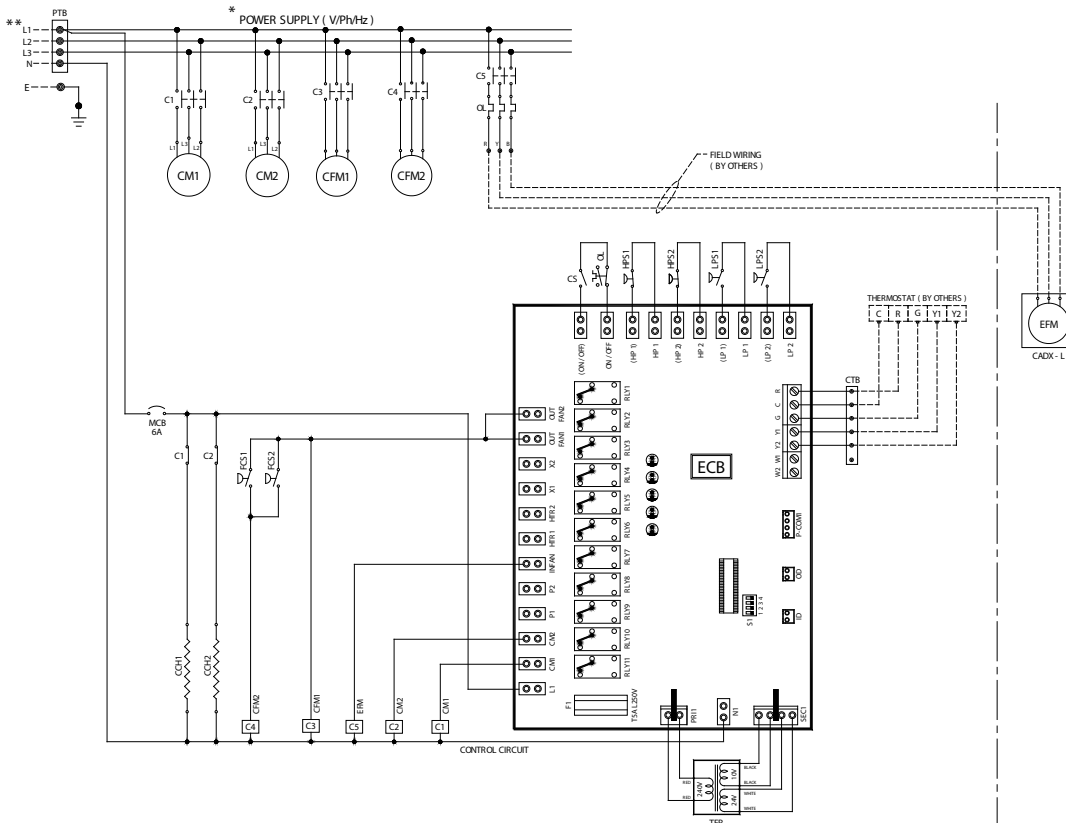
### LEGEND

---	FIELD WIRING & FIELD SUPPLIED DEVICES
PTB	POWER TERMINAL BLOCK
C	CONTACTOR
CM	COMPRESSOR MOTOR
CFM	CONDENSER FAN MOTOR
OL	OVERLOAD RELAY
EFM	EVAPORATOR FAN MOTOR
MCB	MINIATURE CIRCUIT BREAKER
CCH	CRANK CASE HEATER
CS	CONTROL SWITCH
HPS	HIGH PRESSURE SWITCH
LPS	LOW PRESSURE SWITCH
TFR	TRANSFORMER
CTB	CONTROL TERMINAL BLOCK
ECB	ELECTRONIC CONTROL BOARD

\* TYPICAL WIRING DIAGRAM SHOWN IS SUITABLE FOR 380~415V/3Ph50Hz ONLY. FOR 440V/3Ph50Hz, PLEASE CONSULT SKM

\*\* PROVIDE OVERCURRENT, EARTH FAULT PROTECTION, SHORT CIRCUIT AND DISCONNECT MEANS AS REQUIRED BY LOCAL & NATIONAL ELECTRIC CODE. (BY OTHERS)

## ACUM- Models: 110L - 260L



### LEGEND

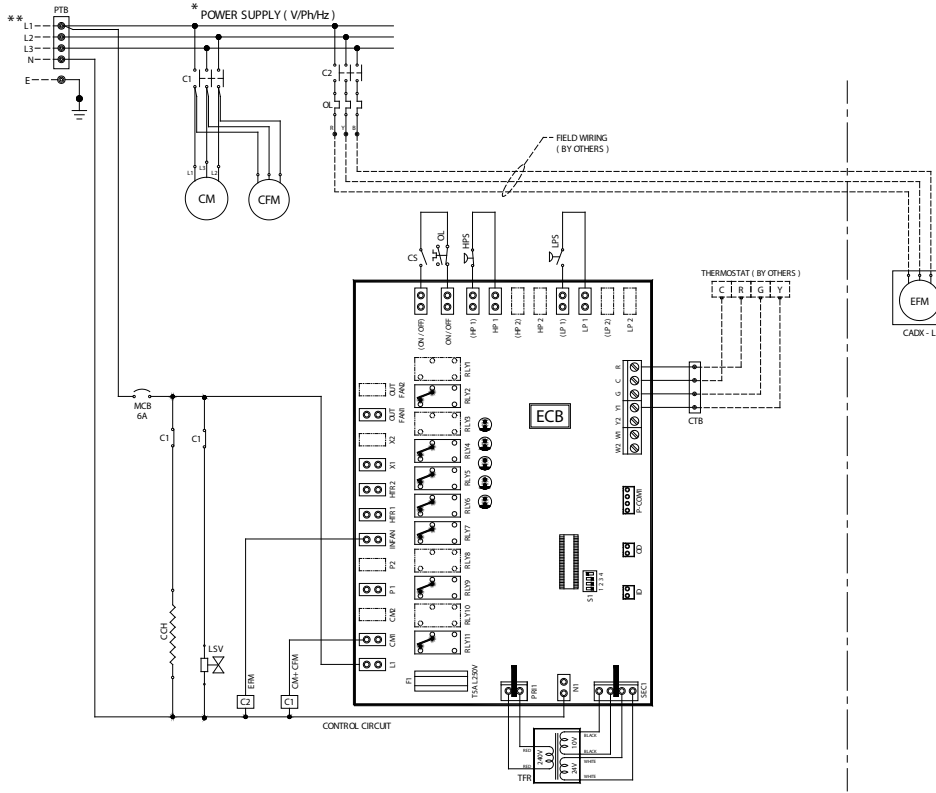
---	FIELD WIRING & FIELD SUPPLIED DEVICES
PTB	POWER TERMINAL BLOCK
C	CONTACTOR
CM	COMPRESSOR MOTOR
CFM	CONDENSER FAN MOTOR
OL	OVERLOAD RELAY
EFM	EVAPORATOR FAN MOTOR
MCB	MINIATURE CIRCUIT BREAKER
CCH	CRANK CASE HEATER
CS	CONTROL SWITCH
HPS	HIGH PRESSURE SWITCH
LPS	LOW PRESSURE SWITCH
TFR	TRANSFORMER
CTB	CONTROL TERMINAL BLOCK
FCS	FAN CYCLING SWITCH
ECB	ELECTRONIC CONTROL BOARD



# SKM Split Air Conditioners ACUM-L + CADX-L Series - R-22

## Typical Wiring Diagram (ESMA APPROVED)

ACUM Models: 050L G - 100L G



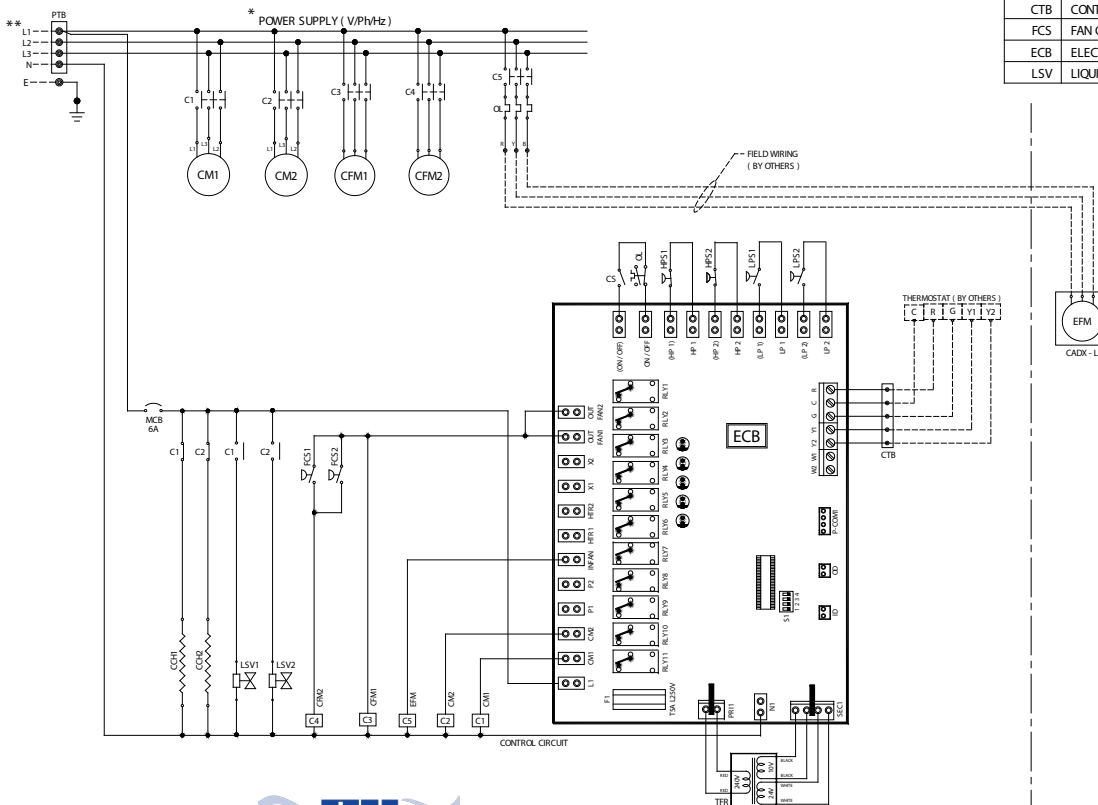
\* TYPICAL WIRING DIAGRAM SHOWN IS SUITABLE FOR 380-415V/3Ph/50Hz ONLY. FOR 440V/3Ph/50Hz, PLEASE CONSULT SKM.

\*\* PROVIDE OVERCURRENT, EARTH FAULT PROTECTION SHORT CIRCUIT AND DISCONNECT MEANS AS REQUIRED BY LOCAL & NATIONAL ELECTRIC CODE. (BY OTHERS)

### LEGEND

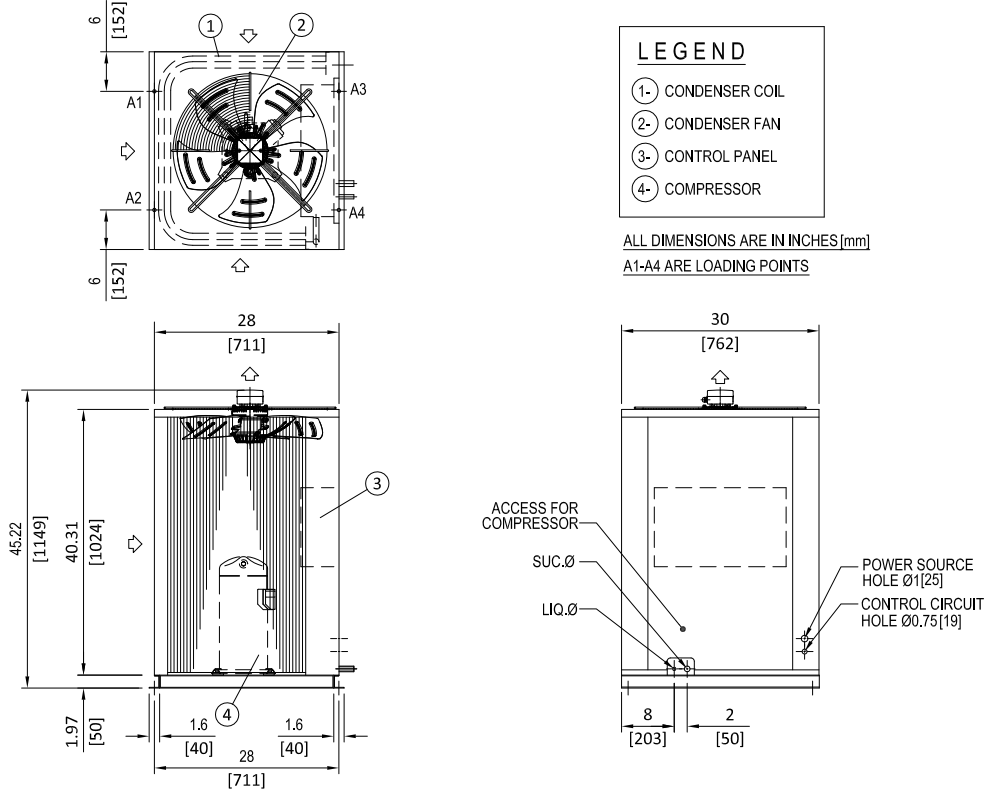
Symbol	Description
---	FIELD WIRING & FIELD SUPPLIED DEVICES
PTB	POWER TERMINAL BLOCK
C	CONTACTOR
CM	COMPRESSOR MOTOR
CFM	CONDENSER FAN MOTOR
QL	OVERLOAD RELAY
EFM	EVAPORATOR FAN MOTOR
MCB	MINIATURE CIRCUIT BREAKER
CCH	CRANK CASE HEATER
CS	CONTROL SWITCH
HPS	HIGH PRESSURE SWITCH
LPS	LOW PRESSURE SWITCH
TFR	TRANSFORMER
CTB	CONTROL TERMINAL BLOCK
FCS	FAN CYCLING SWITCH
ECB	ELECTRONIC CONTROL BOARD
LSV	LIQUID LINE SOLENOID VALVE

ACUM- Models: 110L G - 260L G

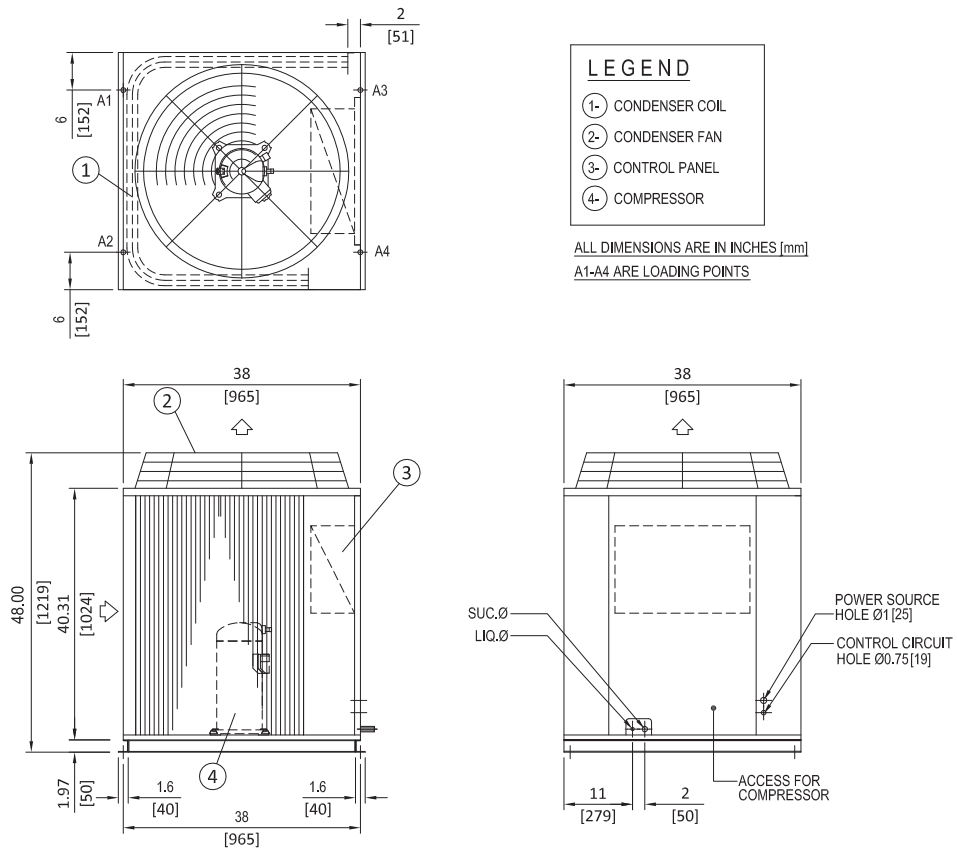


# SKM Split Air Conditioners ACUM-L + CADX-L Series - R-22

## Condensing Unit Dimensional Data Models: ACUM- 050L



## Models: ACUM- 060L, 070L, 085L & 100L

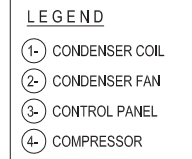
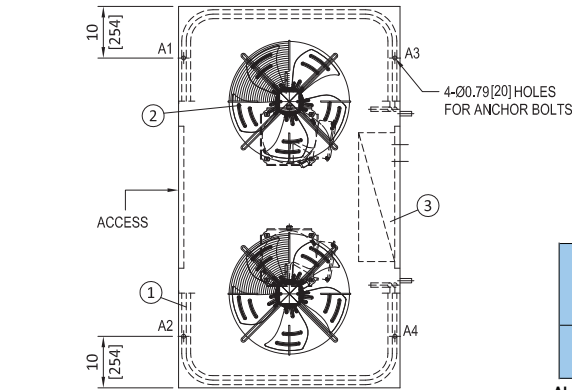


# SKM Split Air Conditioners

## ACUM-L + CADX-L Series - R-22

### Condensing Unit Dimensional Data

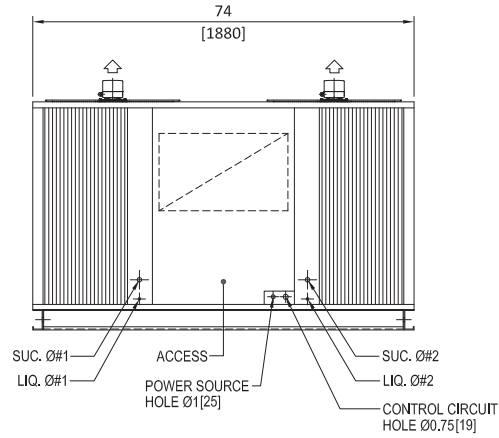
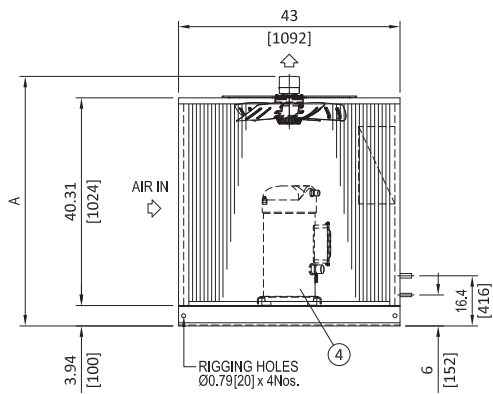
Models: ACUM- 110L, 120L, 130L & 145L



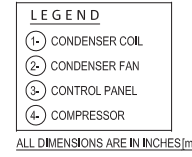
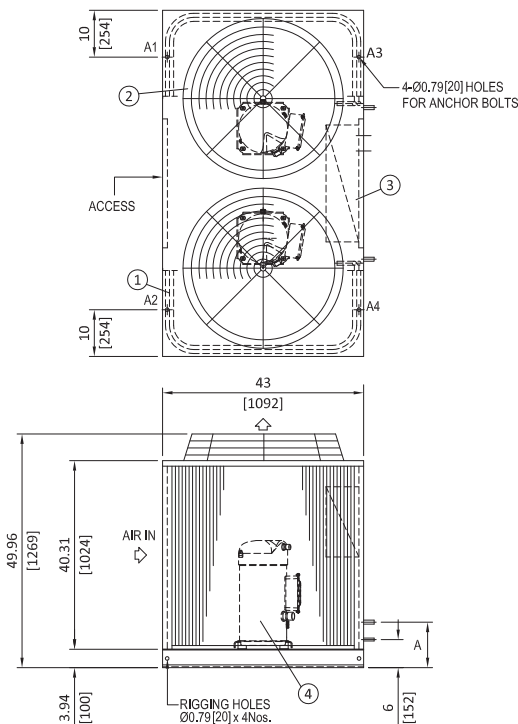
ALL DIMENSIONS ARE IN INCHES[mm]  
A1-A4 ARE LOADING POINTS

Model ACUM-L	DIMENSIONS			
	110L	120L	130L	145L
A	47.2 [1199]	48.4 [1230]	48.4 [1230]	48.4 [1230]

ALL DIMENSIONS ARE IN INCHES [MM]



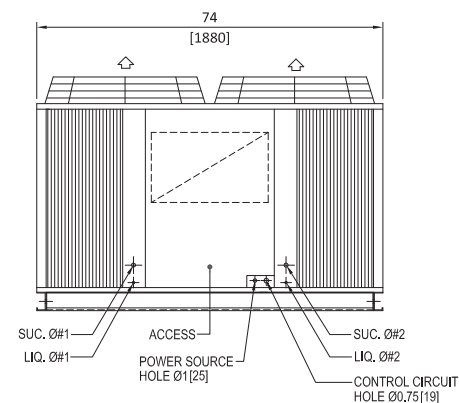
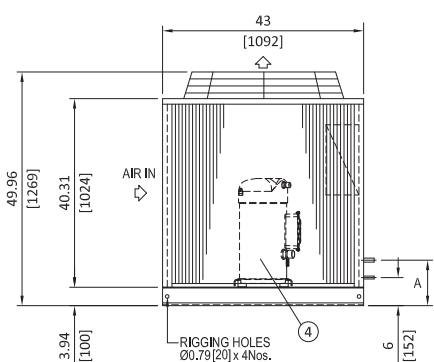
### Models: ACUM- 160L & 180L



ALL DIMENSIONS ARE IN INCHES[mm]  
A1-A4 ARE LOADING POINTS

Model ACUM-L	DIMENSIONS	
	160L	180L
A	16.4 [416]	8.4 [213]

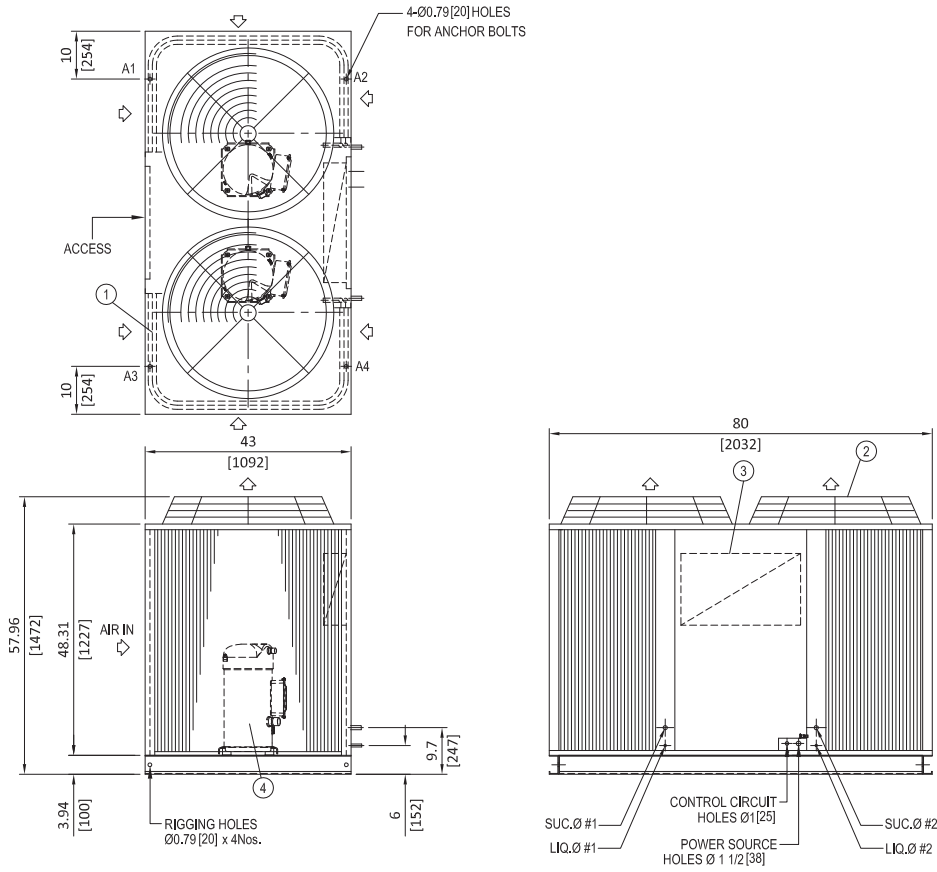
ALL DIMENSIONS ARE IN INCHES [MM]



# SKM Split Air Conditioners ACUM-L + CADX-L Series - R-22

## Condensing Unit Dimensional Data

Models: ACUM- 205L, 240L & 260L



# SKM Split Air Conditioners ACUM-L + CADX-L Series - R-22

## Air Handling Unit Dimensional Data

Models: CADX-050L to 150L

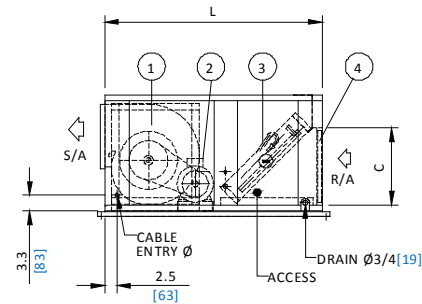
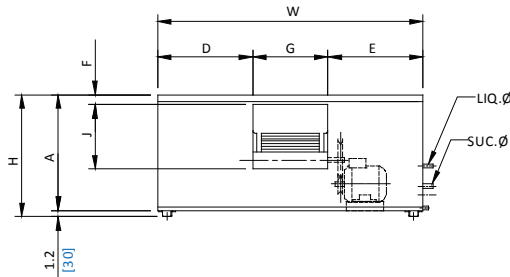
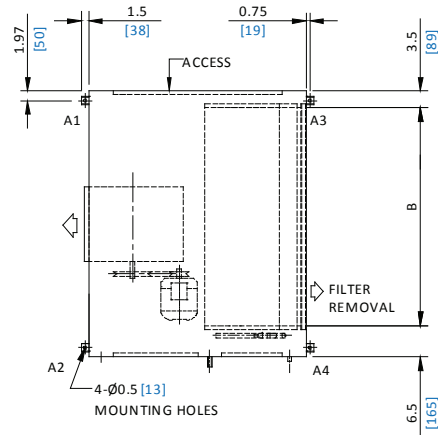
MODEL CADX	DIMENSIONS										
	L	W	H	A	B	C	D	E	F	J	G
050L	45 [1143]	48 [1219]	21.2 [538]	20 [508]	37.5 [952]	16 [406]	17.48 [444]	17.48 [444]	1.61 [41]	11.38 [289]	13.03 [331]
060L	45 [1143]	48 [1219]	25.2 [640]	24 [610]	38 [965]	20 [508]	17.48 [444]	17.48 [444]	1.69 [43]	11.38 [289]	13.03 [331]
070L	45 [1143]	48 [1219]	25.2 [640]	24 [610]	38 [965]	20 [508]	17.48 [444]	17.48 [444]	1.69 [43]	11.38 [289]	13.03 [331]
085L	45 [1143]	55 [1397]	25.2 [640]	24 [610]	45 [1143]	16 [406]	19.72 [501]	19.72 [501]	2.24 [57]	13.43 [341]	15.55 [395]
100L	50 [1270]	56 [1422]	27.2 [690]	26 [660]	46 [1168]	20 [508]	20.2 [514]	20.2 [514]	3.50 [89]	13.43 [341]	15.55 [395]
*120L	50 [1270]	56 [1422]	27.2 [690]	26 [660]	46 [1168]	20 [508]	20.2 [514]	20.2 [514]	3.50 [89]	13.43 [341]	15.55 [395]
*150L	58 [1474]	70 [1778]	30.2 [767]	29 [737]	60 [1524]	25 [635]	25.73 [653]	25.73 [653]	2.48 [63]	15.91 [404]	18.54 [471]

### LEGEND

- ① EVAPORATOR FAN
- ② EVAPORATOR FAN MOTOR
- ③ EVAPORATOR COIL
- ④ 1" THK. FLAT FILTER

\* MODELS WITH DOUBLE CIRCUITS  
USE DRAIN SIZE 1[25] FOR MODELS 150L

ALL DIMENSIONS ARE IN INCHES [mm]  
A1-A4 ARE LOADING POINTS



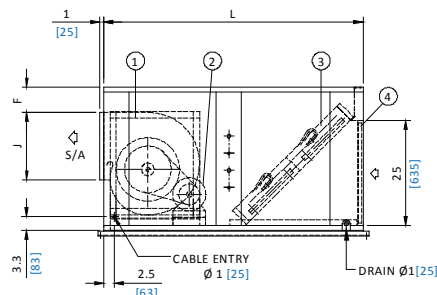
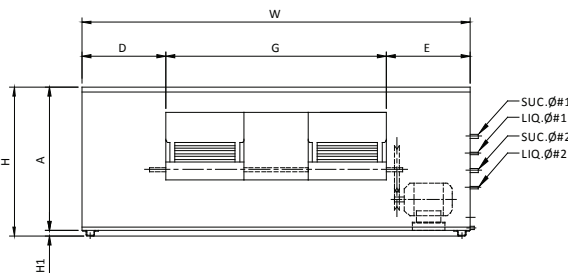
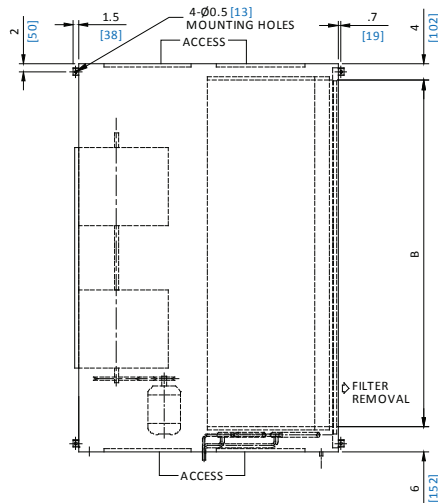
## Models: CADX-180L & 240L

MODEL CADX	DIMENSIONS										
	L	W	H	A	H1	B	D	E	F	J	G
180L	60 [1524]	70 [1778]	33.2 [843]	32 [813]	1.2 [30]	60 [1524]	13.2 [334]	13.2 [334]	8.98 [228]	13.43 [341]	43.7 [1109]
240L	61.4 [1560]	92 [2337]	35.2 [895]	33.5 [850]	1.8 [45]	82 [2083]	19.86 [504]	19.86 [504]	6 [152]	15.91 [404]	52.28 [1328]

### LEGEND

- ① EVAPORATOR FAN
- ② EVAPORATOR FAN MOTOR
- ③ EVAPORATOR COIL
- ④ 1" THK. FLAT FILTER

ALL DIMENSIONS ARE IN INCHES [mm]  
A1-A4 ARE LOADING POINTS





# SKM Split Air Conditioners ACUM-L + CADX-L Series - R-22

## WEIGHTS & LOADING POINTS

### Weights:

MODEL ACUM-L	LOAD AT EACH POINT Lbs (Kgs)				TOTAL WEIGHT
	A1	A2	A3	A4	
050L	79 [36]	82 [37]	79 [36]	81 [37]	321 [146]
060L	87 [40]	91 [41]	87 [40]	89 [40]	354 [161]
070L	89 [40]	93 [42]	89 [40]	91 [41]	362 [163]
085L	110 [50]	114 [52]	110 [50]	112 [51]	446 [203]
100L	112 [51]	116 [53]	112 [51]	114 [52]	454 [207]
110L	171 [78]	171 [78]	173 [79]	173 [79]	688 [314]
120L	173 [79]	173 [79]	175 [79]	175 [79]	696 [316]
130L	176 [80]	176 [80]	178 [81]	178 [81]	708 [322]
145L	177 [81]	177 [81]	179 [81]	179 [81]	712 [324]
160L	194 [88]	194 [88]	196 [89]	196 [89]	780 [354]
180L	214 [97]	214 [97]	216 [98]	216 [98]	860 [390]
205L	235 [107]	235 [107]	238 [108]	238 [108]	946 [430]
240L	226 [103]	226 [103]	229 [104]	229 [104]	910 [414]
260L	227 [103]	227 [103]	230 [105]	230 [105]	914 [416]

MODEL CADX-L	LOAD AT EACH POINT Lbs (Kgs)				TOTAL WEIGHT
	A1	A2	A3	A4	
050L	59 [27]	55 [25]	48 [22]	43 [19]	205 [93]
060L	65 [30]	61 [28]	53 [24]	47 [21]	226 [103]
070L	65 [30]	61 [28]	53 [24]	47 [21]	226 [103]
085L	76 [34]	71 [32]	62 [28]	55 [25]	264 [119]
100L	81 [37]	84 [38]	73 [33]	72 [33]	310 [141]
120L	87 [38]	90 [41]	78 [36]	78 [36]	333 [151]
150L-4	119 [54]	124 [56]	108 [49]	107 [49]	458 [208]
150L	115 [53]	120 [55]	104 [47]	103 [47]	442 [202]
180L	119 [54]	133 [60]	105 [48]	113 [51]	470 [213]
240L	160 [73]	183 [83]	143 [65]	155 [70]	641 [291]

Table 15

## Recommended Suction and Liquid Line Sizes:

Models		PIPE LENGTH - FEET (m)															
		25 (7.6)				50 (15.2)				75 (22.9)				100 (30.5)			
		ACUM	CADX	Circuit A		Circuit B		Circuit A		Circuit B		Circuit A		Circuit B		Circuit A	
Liquid	Suction			Liquid	Suction	Liquid	Suction	Liquid	Suction	Liquid	Suction	Liquid	Suction	Liquid	Suction	Liquid	Suction
050L	050L	1/2	7/8	-	-	1/2	7/8	-	-	1/2	7/8	-	-	1/2	1 1/8	-	-
060L	060L	1/2	7/8	-	-	1/2	1 1/8	-	-	1/2	1 1/8	-	-	1/2	1 1/8	-	-
070L	070L	1/2	7/8	-	-	1/2	1 1/8	-	-	1/2	1 1/8	-	-	5/8	1 1/8	-	-
085L	085L	1/2	1 1/8	-	-	1/2	1 1/8	-	-	5/8	1 1/8	-	-	5/8	1 3/8	-	-
100L	100L	1/2	1 1/8	-	-	5/8	1 1/8	-	-	5/8	1 1/8	-	-	5/8	1 3/8	-	-
110L	120L	1/2	7/8	1/2	7/8	1/2	7/8	1/2	7/8	1/2	1 1/8	1/2	1 1/8	1/2	1 1/8	1/2	1 1/8
120L	120L	1/2	7/8	1/2	7/8	1/2	1 1/8	1/2	1 1/8	1/2	1 1/8	1/2	1 1/8	1/2	1 1/8	1/2	1 1/8
130L	150L	1/2	7/8	1/2	7/8	1/2	1 1/8	1/2	1 1/8	1/2	1 1/8	1/2	1 1/8	5/8	1 1/8	5/8	1 1/8
145L	150L	1/2	7/8	1/2	7/8	1/2	1 1/8	1/2	1 1/8	1/2	1 1/8	1/2	1 1/8	5/8	1 1/8	5/8	1 1/8
160L	150L	1/2	7/8	1/2	7/8	1/2	1 1/8	1/2	1 1/8	5/8	1 1/8	5/8	1 1/8	5/8	1 1/8	5/8	1 1/8
180L	180L	1/2	1 1/8	1/2	1 1/8	1/2	1 1/8	1/2	1 1/8	5/8	1 1/8	5/8	1 1/8	5/8	1 3/8	5/8	1 3/8
205L	180L	1/2	1 1/8	1/2	1 1/8	5/8	1 1/8	5/8	1 1/8	5/8	1 1/8	5/8	1 1/8	5/8	1 3/8	5/8	1 3/8
240L	240L	5/8	1 1/8	5/8	1 1/8	5/8	1 1/8	5/8	1 1/8	5/8	1 3/8	5/8	1 3/8	5/8	1 3/8	5/8	1 3/8
260L	240L	5/8	1 1/8	5/8	1 1/8	5/8	1 1/8	5/8	1 1/8	5/8	1 3/8	5/8	1 3/8	3/4	1 3/8	3/4	1 3/8

Table 16

### Notes :

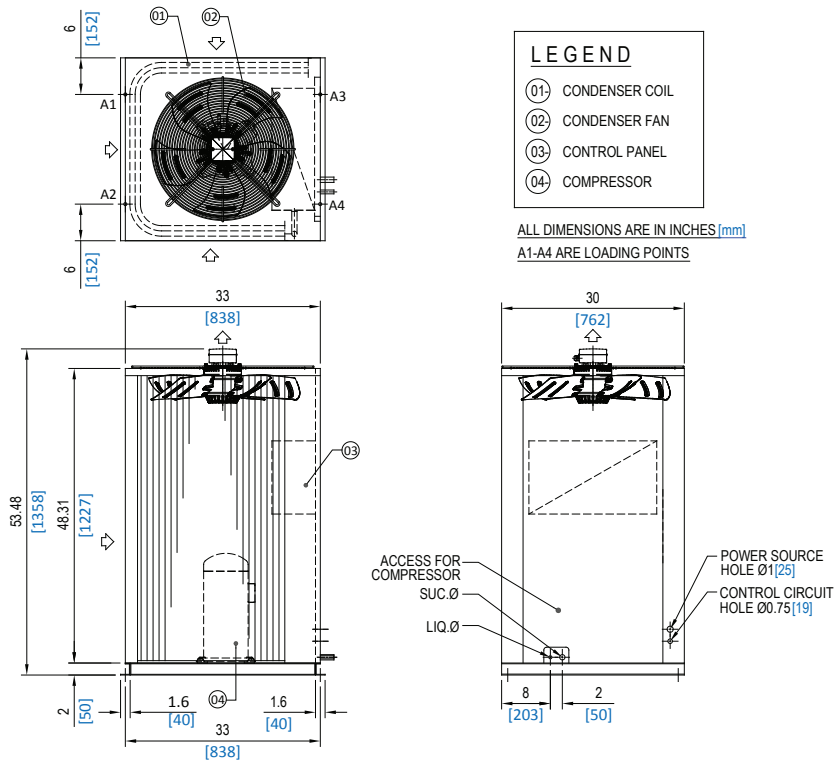
1. Pipe diameters are based on equivalent length of copper tubing sizes.
2. Pipe sizes are based on 2°F (1.1°C) or less temperature losses for liquid and suction line in equivalent pipe length.
3. If the condensing unit is below the evaporating unit, the maximum lift should not exceed to 66 feet.
4. Do not exceed 100 feet piping length without checking with SKM.
5. These sizes are for guidance only. For detailed proper piping, refer to recognized piping references like ASHRAE Guide and Data Book.

*The recommended or required suction and liquid line sizes do not necessarily correspond with the refrigerant connections available on the outdoor or indoor unit. Necessary transformation may be required and it's field performed.*

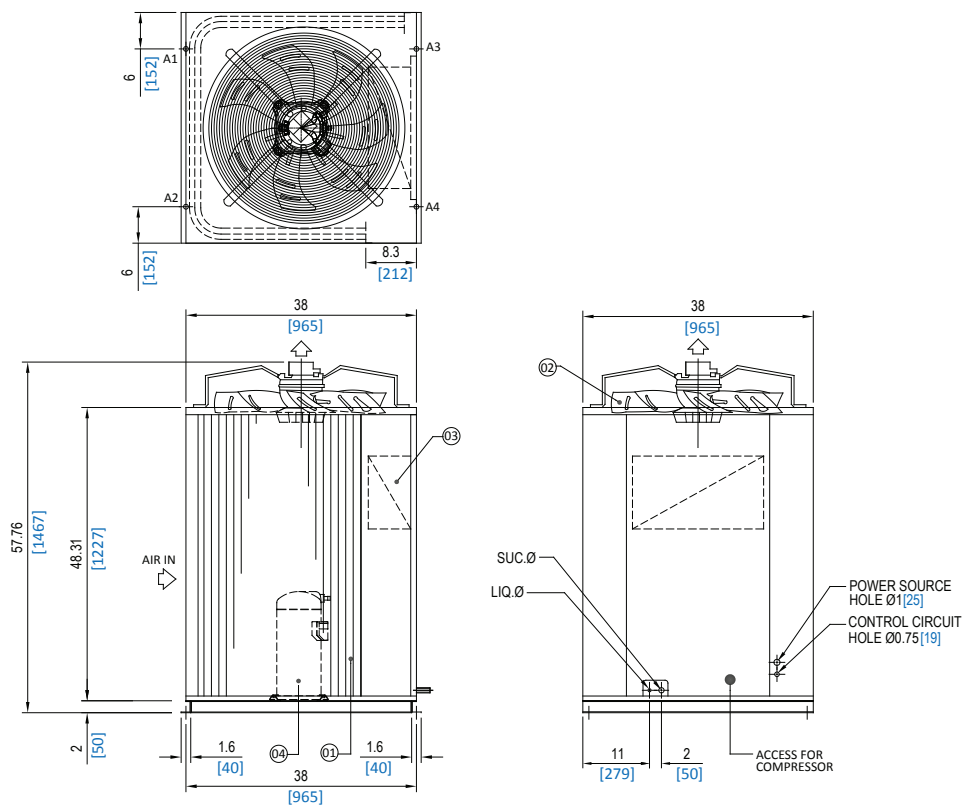
# SKM Split Air Conditioners ACUM-L + CADX-L Series - R-22

## Condensing Unit Dimensional Data (ESMA APPROVED)

Models: ACUM- 050L G



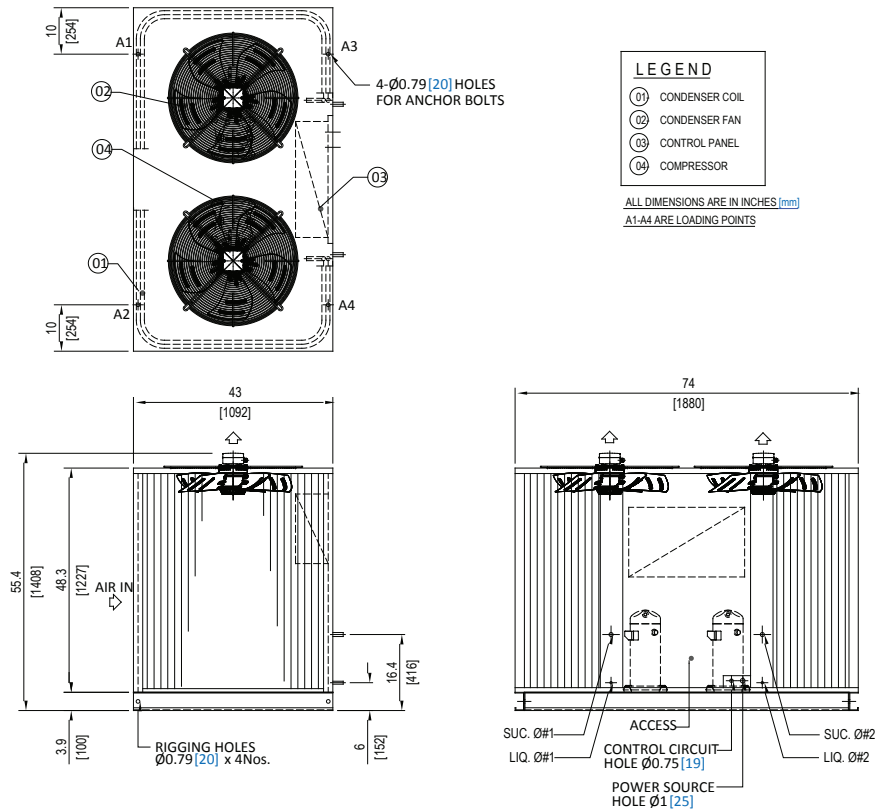
Models: ACUM- 060L G ,070L G ,085L G &100L G



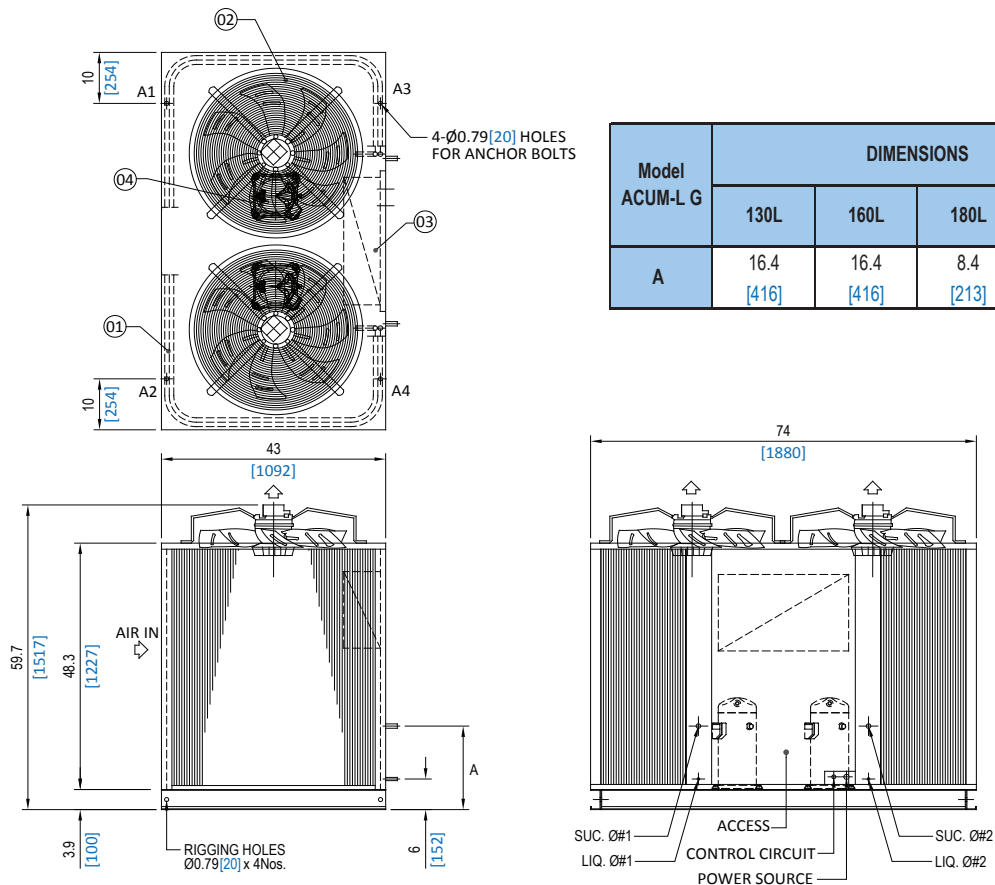
# SKM Split Air Conditioners ACUM-L + CADX-L Series - R-22

## Condensing Unit Dimensional Data (ESMA APPROVED)

Models: ACUM- 110L G & 120L G



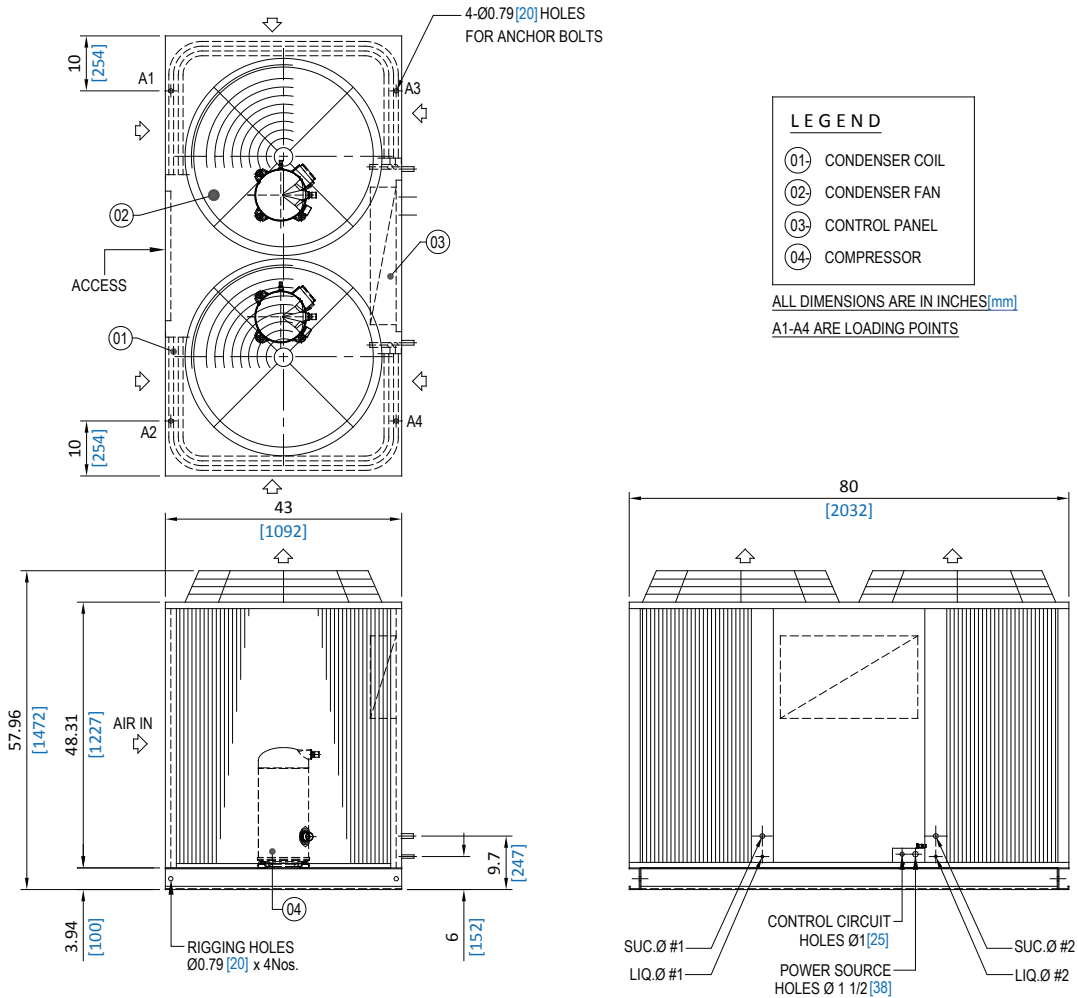
Models: ACUM- 130L G, 160L G, 180L G & 205L G



# SKM Split Air Conditioners ACUM-L + CADX-L Series - R-22

## Condensing Unit Dimensional Data (ESMA APPROVED)

Models: ACUM- 240L G & 260L G



# SKM Split Air Conditioners ACUM-L + CADX-L Series - R-22

## Air Handling Unit Dimensional Data (ESMA APPROVED)

Models: CADX-050L G to 180L G

Model CADX-L	DIMENSIONS										
	L	W	H	A	B	C	D	E	J	G	F
060L	45 [1143]	48 [1219]	25.2 [640]	24 [610]	38 [965]	20 [508]	17.48 [444]	17.48 [444]	11.38 [289]	13.03 [331]	1.7 [43]
070L	45 [1143]	48 [1219]	25.2 [640]	24 [610]	38 [965]	20 [508]	17.48 [444]	17.48 [444]	11.38 [289]	13.03 [331]	1.7 [43]
100L	50 [1270]	56 [1422]	27.2 [690]	26 [660]	46 [1168]	20 [508]	20.2 [514]	20.2 [514]	13.43 [341]	15.55 [395]	3.5 [89]
*120L	50 [1270]	56 [1422]	28.2 [716]	27 [686]	46 [1168]	20 [508]	20.2 [514]	20.2 [514]	13.43 [341]	15.55 [395]	3.5 [89]
*150L	58 [1474]	70 [1778]	30.2 [767]	29 [737]	60 [1524]	25 [635]	25.73 [653]	25.73 [653]	15.91 [404]	18.54 [471]	2.5 [63]
*180L	60 [1524]	70 [1778]	33.2 [843]	32 [813]	60 [1524]	25 [635]	13.2 [334]	13.2 [334]	13.43 [341]	43.66 [1109]	2.5 [63]

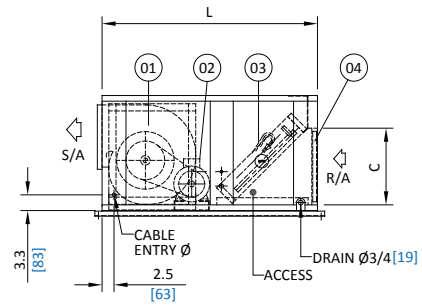
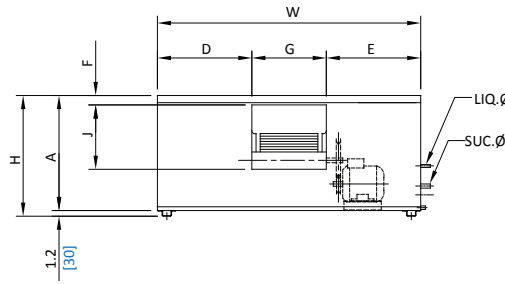
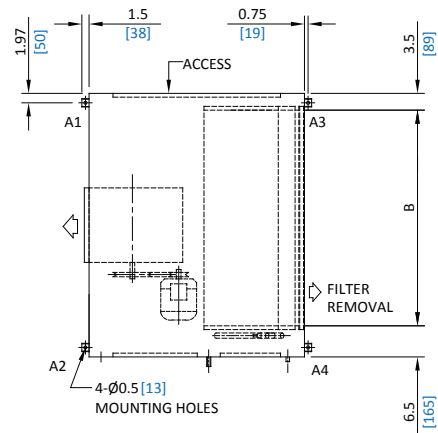
MODEL CADX-180L WITH DOUBLE BLOWF

ALL DIMENSIONS ARE IN INCHES

\*MODELS WITH DOUBLE CIRCUITS

A1- A4 ARE LOADING POINTS

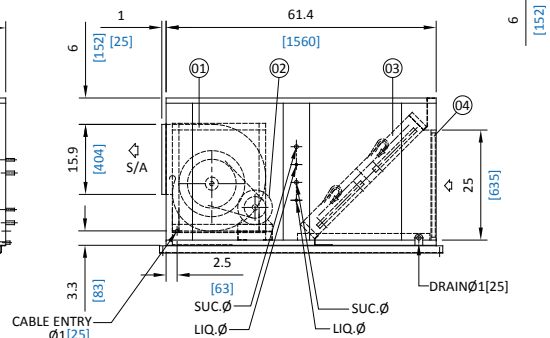
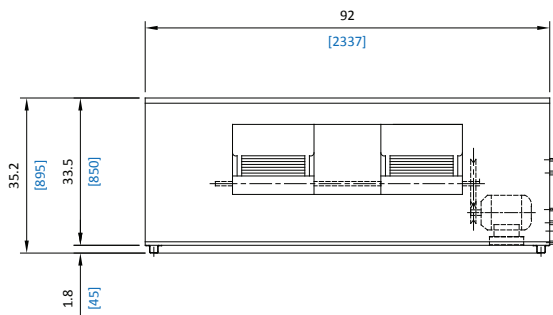
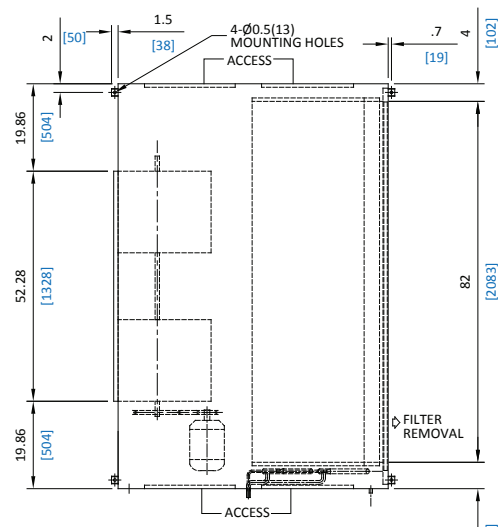
USE DRAIN SIZE 1/2[25] FOR MODELS 150L & 180L



## Models: CADX-240L G

- LEGEND**
- ①-EVAPORATOR FAN
  - ②-EVAPORATOR FAN MOTOR
  - ③-EVAPORATOR COIL
  - ④-1"THK. FLAT FILTER

ALL DIMENSIONS ARE IN INCHES [mm]  
A1-A4 ARE LOADING POINTS





# SKM Split Air Conditioners ACUM-L + CADX-L Series - R-22

## WEIGHTS & LOADING POINTS (ESMA APPROVED)

### Weights:

MODEL ACUM-L G	LOAD AT EACH POINT Lbs (Kgs)				TOTAL WEIGHT
	A1	A2	A3	A4	
050L G	111 [50]	114 [52]	101 [46]	103 [47]	429 [195]
060L G	119 [54]	123 [56]	110 [50]	112 [51]	464 [211]
070L G	121 [55]	125 [57]	112 [51]	114 [52]	472 [215]
085L G	123 [56]	127 [58]	120 [55]	122 [55]	492 [224]
100L G	125 [57]	129 [59]	122 [55]	124 [56]	500 [227]
110L G	221 [100]	221 [100]	182 [83]	182 [83]	806 [366]
120L G	218 [99]	218 [99]	179 [81]	179 [81]	794 [360]
130L G	243 [110]	243 [110]	204 [93]	204 [93]	894 [406]
160L G	254 [115]	254 [115]	215 [98]	215 [98]	938 [426]
180L G	274 [124]	274 [124]	235 [107]	235 [107]	1018 [462]
205L G	267 [121]	267 [121]	246 [112]	246 [112]	1026 [466]
240L G	256 [116]	256 [116]	259 [118]	259 [118]	1030 [468]
260L G	257 [117]	257 [117]	260 [118]	260 [118]	1034 [470]

Table 17

MODEL CADX-L G	LOAD AT EACH POINT Lbs (Kgs)				TOTAL WEIGHT
	A1	A2	A3	A4	
060L G	66 [30]	62 [28]	57 [26]	51 [23]	236 [107]
070L G	66 [30]	62 [28]	57 [26]	51 [23]	236 [107]
100L G	83 [38]	86 [39]	78 [35]	77 [35]	324 [147]
120L G	89 [40]	92 [42]	84 [38]	83 [38]	348 [158]
150L G	120 [55]	125 [57]	110 [50]	109 [49]	464 [211]
180L G	122 [55]	136 [62]	115 [52]	122 [56]	495 [225]
240L G	169 [77]	192 [87]	166 [75]	176 [80]	703 [319]

Table 18

## Recommended Suction and Liquid Line Sizes:

Models		PIPE LENGTH - FEET (m)															
		25 (7.6)				50 (15.2)				75 (22.9)				100 (30.5)			
		ACUML G	CADXL G	Circuit A		Circuit B		Circuit A		Circuit B		Circuit A		Circuit B		Circuit A	
Liquid	Suction			Liquid	Suction	Liquid	Suction	Liquid	Suction	Liquid	Suction	Liquid	Suction	Liquid	Suction	Liquid	Suction
050L G	050L G	1/2	7/8	-	-	1/2	7/8	-	-	1/2	7/8	-	-	1/2	1 1/8	-	-
060L G	060L G	1/2	7/8	-	-	1/2	1 1/8	-	-	1/2	1 1/8	-	-	1/2	1 1/8	-	-
070L G	070L G	1/2	7/8	-	-	1/2	1 1/8	-	-	1/2	1 1/8	-	-	5/8	1 1/8	-	-
085L G	085L G	1/2	1 1/8	-	-	1/2	1 1/8	-	-	5/8	1 1/8	-	-	5/8	1 3/8	-	-
100L G	100L G	1/2	1 1/8	-	-	5/8	1 1/8	-	-	5/8	1 1/8	-	-	5/8	1 3/8	-	-
110L G	120L G	1/2	7/8	1/2	7/8	1/2	7/8	1/2	7/8	1/2	1 1/8	1/2	1 1/8	1/2	1 1/8	1/2	1 1/8
120L G	120L G	1/2	7/8	1/2	7/8	1/2	1 1/8	1/2	1 1/8	1/2	1 1/8	1/2	1 1/8	1/2	1 1/8	1/2	1 1/8
130L G	150L G	1/2	7/8	1/2	7/8	1/2	1 1/8	1/2	1 1/8	1/2	1 1/8	1/2	1 1/8	5/8	1 1/8	5/8	1 1/8
145L G	150L G	1/2	7/8	1/2	7/8	1/2	1 1/8	1/2	1 1/8	1/2	1 1/8	1/2	1 1/8	5/8	1 1/8	5/8	1 1/8
160L G	150L G	1/2	7/8	1/2	7/8	1/2	1 1/8	1/2	1 1/8	5/8	1 1/8	5/8	1 1/8	5/8	1 1/8	5/8	1 1/8
180L G	180L G	1/2	1 1/8	1/2	1 1/8	1/2	1 1/8	1/2	1 1/8	5/8	1 1/8	5/8	1 1/8	5/8	1 3/8	5/8	1 3/8
205L G	180L G	1/2	1 1/8	1/2	1 1/8	5/8	1 1/8	5/8	1 1/8	5/8	1 1/8	5/8	1 1/8	5/8	1 3/8	5/8	1 3/8
240L G	240L G	5/8	1 1/8	5/8	1 1/8	5/8	1 1/8	5/8	1 1/8	5/8	1 3/8	5/8	1 3/8	5/8	1 3/8	5/8	1 3/8
260L G	240L G	5/8	1 1/8	5/8	1 1/8	5/8	1 1/8	5/8	1 1/8	5/8	1 3/8	5/8	1 3/8	3/4	1 3/8	3/4	1 3/8

Table 19

### Notes :

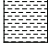

1. Pipe diameters are based on equivalent length of copper tubing sizes.
2. Pipe sizes are based on 2°F (1.1°C) or less temperature losses for liquid and suction line in equivalent pipe length.
3. If the condensing unit is below the evaporating unit, the maximum lift should not exceed to 66 feet.
4. Do not exceed 100 feet piping length without checking with SKM.
5. These sizes are for guidance only. For detailed proper piping, refer to recognized piping references like ASHRAE Guide and Data Book.

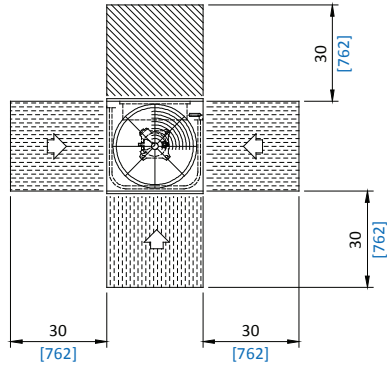
*The recommended or required suction and liquid line sizes do not necessarily correspond with the refrigerant connections available on the outdoor or indoor unit. Necessary transformation may be required and it's field performed.*

# SKM Split Air Conditioners ACUM-L + CADX-L Series - R-22

## Recommended Clearances

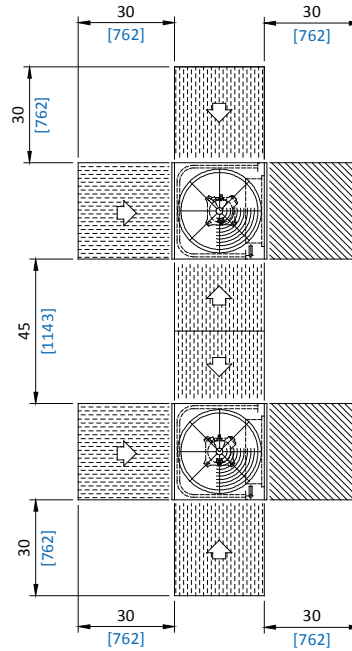
### UNIT CLEARANCE

 SPACING FOR AIR FLOW  
 SPACING FOR SERVICE  
 ALL DIMENSIONS ARE IN INCHES[mm]



ACUM- 050L to 100L

SINGLE UNIT



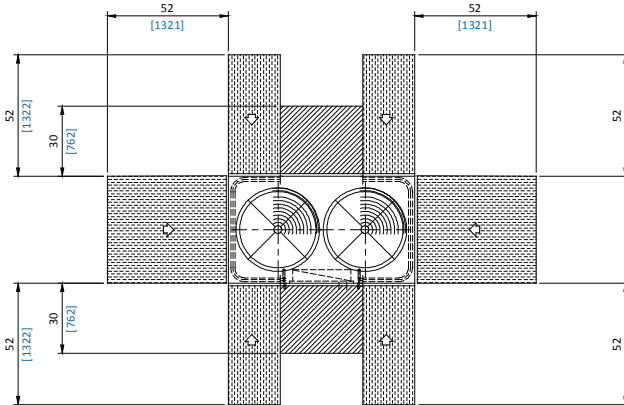
ACUM- 050L to 100L

MULTIPLE UNIT

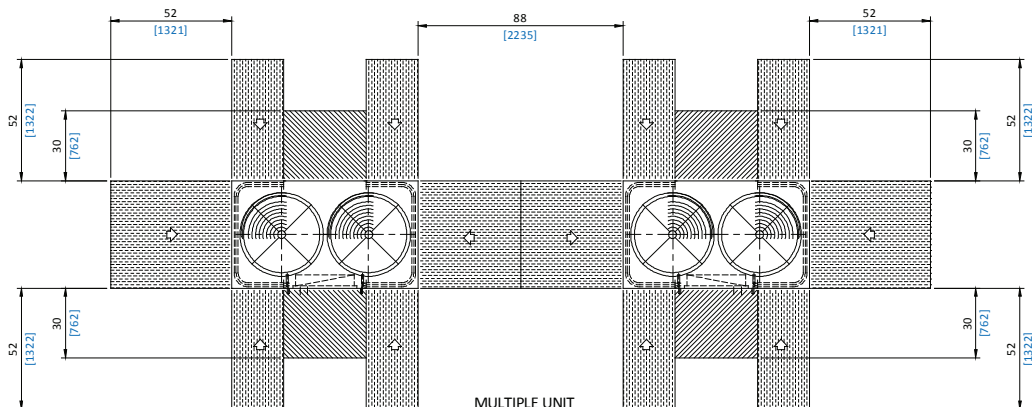
### UNIT CLEARANCE

 SPACING FOR SERVICE  
 SPACING FOR AIR FLOW

ACUM- 110L to 260L



SINGLE UNIT



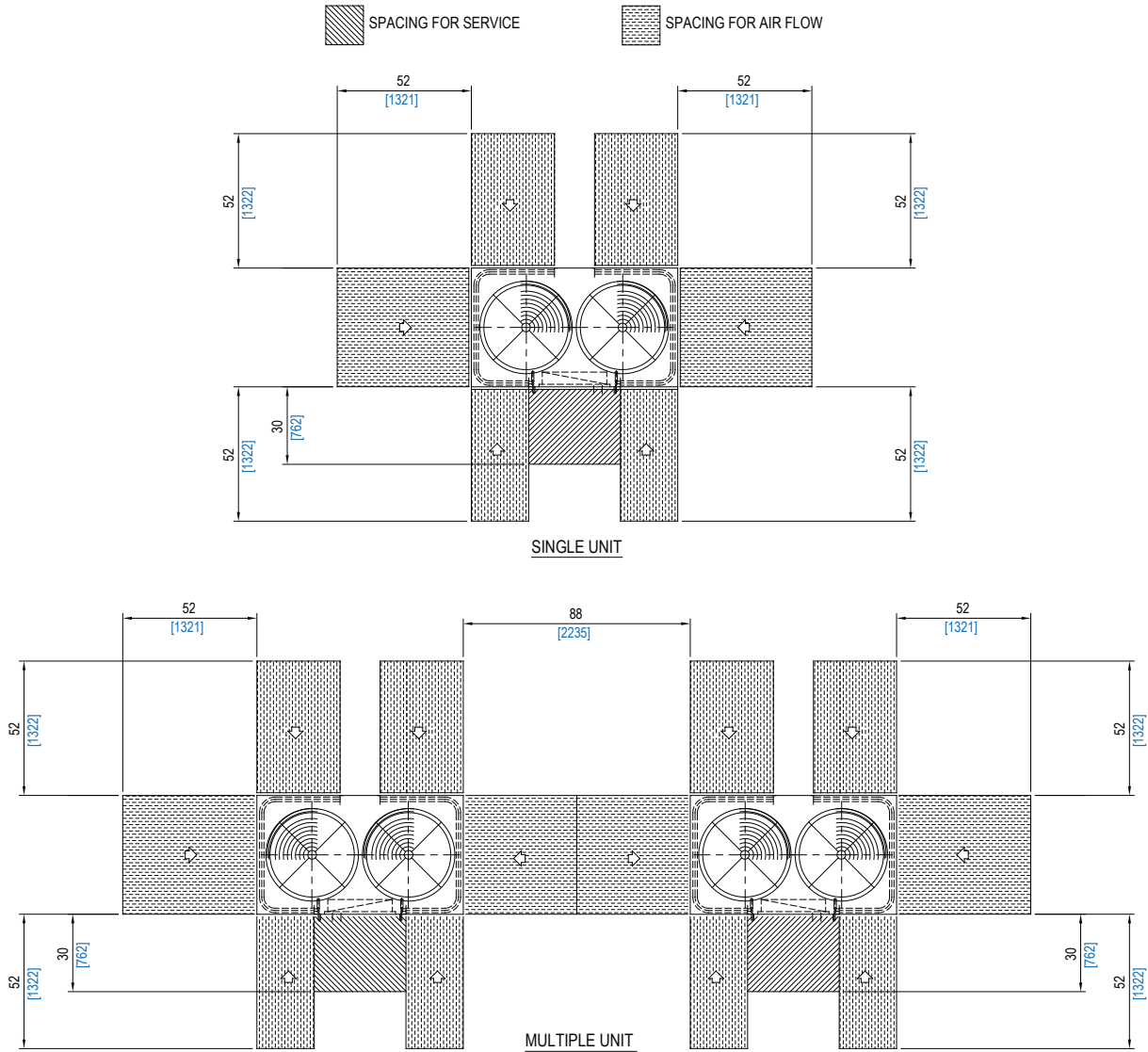
MULTIPLE UNIT

# SKM Split Air Conditioners ACUM-L + CADX-L Series - R-22

## Recommended Clearances (ESMA APPROVED)

Models: ACUM - 110 LG to 205 LG

### UNIT CLEARANCE

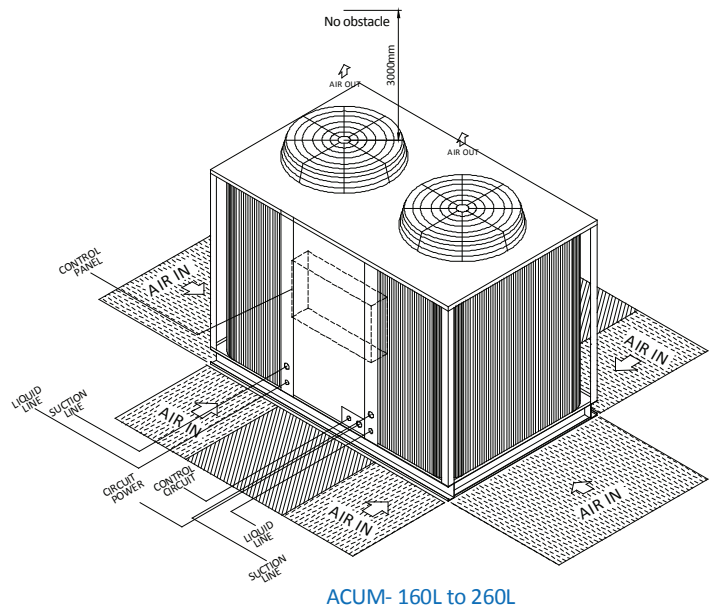
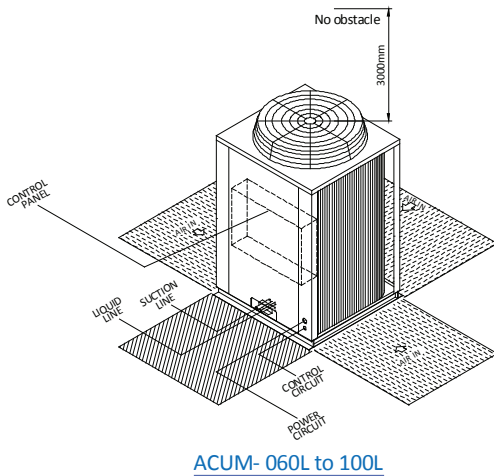
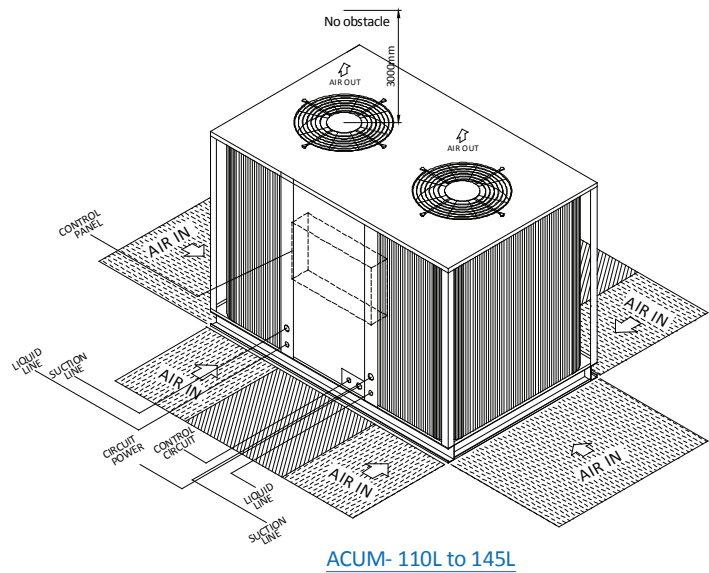
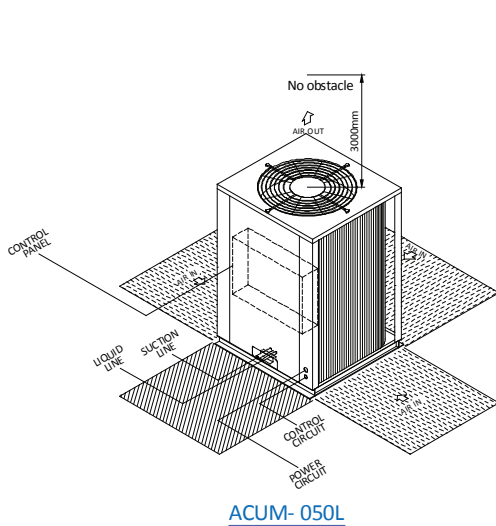
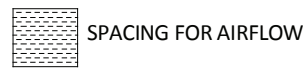


# SKM Split Air Conditioners ACUM-L + CADX-L Series - R-22

## Installation and Commissioning

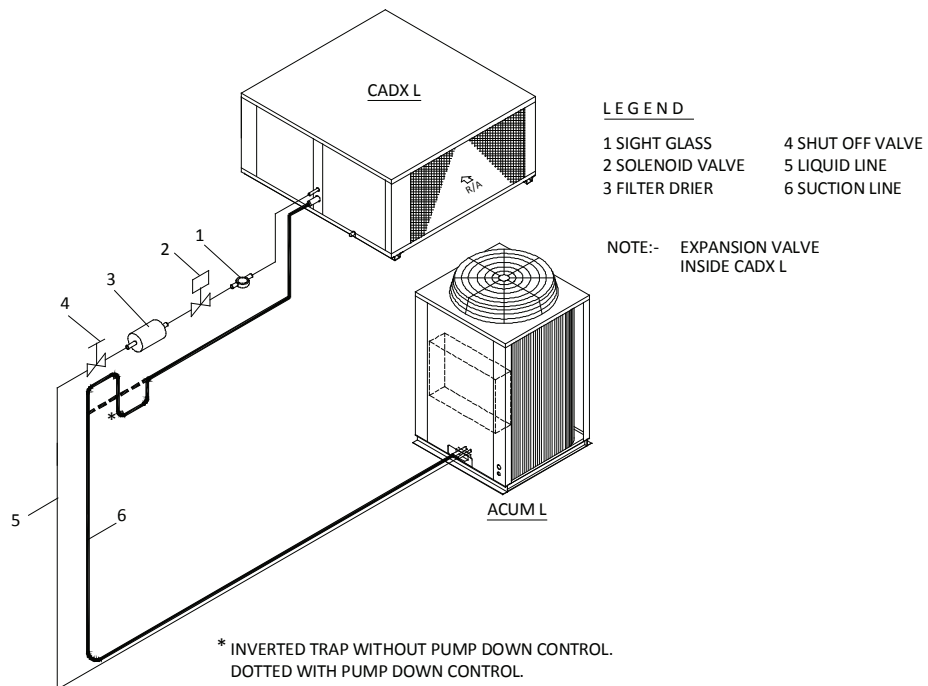
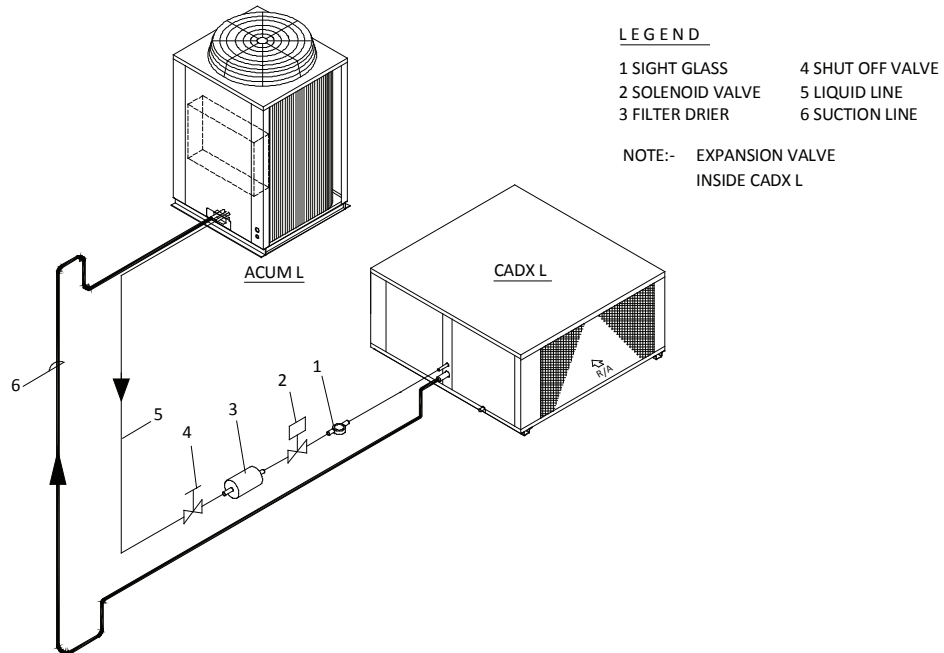
- Install the unit in such a location which is flat and strong enough to support its weight.
- All field wiring must comply with applicable local and national codes.
- Service spacing should be provided as shown in the figure. If any obstacles are around the unit, distributed air is short-circuited so that the unit stops frequently and access to the unit is difficult for inspection and aftersales services.

### INSTALLATION & COMMISSIONING



# SKM Split Air Conditioners ACUM-L + CADX-L Series - R-22

## Typical Refrigeration Piping



### Refrigerant Piping:

Correct design and size of refrigerant piping is necessary to proper operation. The refrigerant piping generally should be designed to accomplish the following:

- To ensure proper refrigerant feed to the evaporator.
- To provide practical refrigerant line sizes without excessive pressure drop.
- To maintain uniform return of lubricating oil to the compressor.
- To prevent refrigerant from entering the compressor and causing compressor damage due to "slugging".

# SKM Split Air Conditioners ACUM-L + CADX-L Series - R-22

## GUIDE SPECIFICATIONS

### GENERAL

Split air conditioner shall be composed of a ceiling suspended air handling unit & floor mounted air cooled condensing unit, rated in accordance with AHRI standards 210 / 240 and 340 / 360. Unit should be capable to operate in a wide range of ambient temperatures from 50°F (10°C) to 125°F (51.7°C) and shall be selected in accordance with project requirements and installed as per Instruction, Operation & Maintenance Manual.

### CONDENSING UNIT

The condensing unit shall be composed of compressor(s), coil(s) and condenser fan(s) and motor(s).

### COMPRESSOR

Compressor shall be hermetically sealed, compact high efficiency and low noise scroll type. These compressors are refrigerant gas cooled, furnished with advanced scroll temperature protection or internal motor protection.

### CONDENSER COIL(S)

Condenser coils shall be air cooled with integral sub cooler, constructed of special inner grooved seamless copper tubes 3/8" OD mechanically expanded into waffle louver aluminum fins. These coils shall be tested against leakage by air pressure of 450 psig (3100 kPa) under water, cleaned & dehydrated at the factory.

### CONDENSER FAN(S) & MOTOR(S)

Condenser Fans shall be direct driven propeller type discharging air vertically upward, equipped with statically & dynamically balanced aluminum alloy blades, inherent corrosion resistant shaft & PVC coated steel wire fan guard. Condenser fan motor(s) shall be Totally Enclosed Air Over (TEAO), 4 pole or 6 pole, class-F insulation, minimum IP-54 protection and factory wired to unit control panel

### CONTROL PANEL

The panel shall be factory wired and confirm to IP-54 requirements. Control panel shall contain compressor and motor starting contactors, electronic control board for unit operation, compressor anti-recycle time delay, control on/off switch, control circuit breaker and power & control terminal blocks. High and Low pressure switches should be provided for protection.

### CONDENSING UNIT CASING

Units casing shall be made of hot dip galvanized steel sheets (zinc coated) conforming to JIS-G3302 and ASTM A525 that shall be phosphatized and then electrostatically dry powder coated of approx 60 microns to provide an extremely tough, scratch resistance, excellent anti corrosive protection that can pass 1000 hours in 5% salt spray testing at 95°F relative humidity as per ASTM B117.

### AIR HANDLING UNIT CASING

The unit casing for CADX-L is made of zinc coated galvanized steel sheets conforming to JIS-G3302 and ASTM A525 which is phosphatized and baked after an electrostatic powder coat of approximately 60 microns. This finish and coating can pass a 1000 hour in 5% salt spray testing at 95°F (35°C) and 95% relative humidity as per ASTM B117. Panels and casing are insulated with 1" (25mm) thick fiberglass (with BGT coating) thermal and acoustic insulation having density of 2 lb/ft<sup>3</sup>. (32 kg/m<sup>3</sup>) and thermal conductivity of 0.23 BTU.in/ft<sup>2</sup>°Fh (0.033 W/m<sup>2</sup>K). Insulation meets the requirements of NFPA 90A and 90B for fire resistance.

### EVAPORATOR COIL

Evaporator coil shall be constructed of inner grooved copper tubes 3/8" OD mechanically bonded to aluminum cross wave fins. Coil consists of headers of seamless copper tubing, thermostatic expansion valve(s) & multi-circuited distributor(s). These coils shall be tested against leakage by air pressure of 300 psig (2068 Kpa) under water, cleaned & dehydrated at the factory. Coil shall conform to AHRI-410.

### EVAPORATOR FAN AND MOTOR

Fans of evaporators shall be forward curved, double inlet double width (DIDW), centrifugal type, Statically & dynamically balanced, mounted on a single heavy duty statically & shaft with permanently lubricated bearings & driven by V belt with an adjustable variable pitch motor pulley. Motor shall be Totally Enclosed Fan Cooled (TEFC), 4 poles, class-F insulated, minimum IP55 protection & wired to unit control panel.

### FILTERS

Air handling units shall be provided with air filter. Filter should be 1" (25mm) standard or 2" (50mm) thick optional washable aluminum media with average dust arrestance 54% based on ASHRAE standards 52.1.







*you name it  
we cool it*

## HEAD OFFICE

P.O Box: 6004  
Sharjah, United Arab Emirates  
Tel: +971 6 514 3333  
Fax: +971 6 514 3300  
Email: sales@skmaircon.com  
Email: info@skmaircon.com

### Spare Parts Division

Email: spareparts.skm@skmaircon.com

### Service Centre

Email: aftersales.skm@skmaircon.com

## REGIONAL OFFICES

### United Arab Emirates

#### Abu Dhabi

P.O Box: 27788  
Tel: +971 2 6445223  
Fax: +971 2 6445145  
Email: abudhabisales.skm@skmaircon.com

#### Dubai

P.O Box: 98822  
Tel: +971 4 2940900  
Fax: +971 4 2940029  
Email: dubaisales.skm@skmaircon.com

#### Al Ain

Tel: +971 3 7619921  
Fax: +971 3 7619941  
Email: alainsales.skm@skmaircon.com

### Kuwait

#### Dasman

P.O Box: 1215-PC 15463  
Tel: +965 2 2492200  
Fax: +965 2 2494400  
Email: kuwait-sales.skm@skmaircon.com

### Saudi Arabia (Production Facility)

SKM Air Conditioning Factory  
Eastern province  
AD Dammam  
2<sup>nd</sup> industrial city  
Abqiq main road Hail Street  
Tel: +966 3 8123332 / 4 / 5  
Fax: +966 3 8123337 / +966 3 8123092  
Email: saudifactory.skm@skmaircon.com

### Algeria

Aissat Idir ( EX-ENMA) City  
Bldg1, Flat 2, Dar El Beida Algiers  
Tel: +213 21 508197  
Fax: +213 21 508197  
Email: algeriasales.skm@skmaircon.com

For SKM Distributors visit:

[www.skmaircon.com](http://www.skmaircon.com)