

# ROOF TOP PACKAGE UNITS



**HIEER**  
**Capacity: 3-25 Tons**  
**PRODUCT DATA BOOK**



# Introduction

---

Roof Top Package units have been developed & produced to provide not only the ultimate indoor comfort, but also to guarantee long & trouble free operations.

Herein lies the reason for the Choice of only the highest quality components and design strategies to meet the most important objectives such as,

*Efficiency*

*Reliability*

*Flexibility*

*Easy Installability*

*Serviceability*

*Affordability*

---

**3 TO 25 TONS CAPACITY  
ROOF TOP PACKAGE UNITS**

---

# SALIENT FEATURES

The units are horizontal air flow type and are suitable for mounting on the roof or on the ground. All units are factory assembled, piped, internally wired and fully charged with R-407C. These units are tested in accordance with ARI standards.

The units are available in the following voltages: 380-415 V/3PH/50 HZ

All components are mounted in a weather resistant steel cabinet. The cabinet & access panels are powder coated for lasting protection and durability. Indoor air section compartments are completely insulated with 1" Fire retardant fiberglass insulation & knockouts provided for utility and control connections.

Compressors are fully hermetic type designed for high efficiency provided with standard control and safety devices like HP & LP controls and crank case heater for scroll and reciprocating compressors.

Evaporator and condenser coils are made of seamless Inner grooved copper tubes mechanically bonded to aluminum fins, leak tested and pressure tested to 550 psig.

3TR capacity units, Evaporator blowers are direct drive centrifugal type, forward curve blade design, sized to meet airflow and static.

5TR and above capacity units, Evaporator blowers are Belt drive centrifugal type, forward curve blade design, sized to meet system air flow and static.

Condenser fans are propeller type, direct drive, draw through vertical discharge with fan guard mounted to the panel.

Thermostatic expansion valve / metering device provides precision control for maximized cooling.

The units are completely factory wired with single point power input.

Easy accessible control box, compressor, controls and blower compartment.

All the units are provided with compressor lockout either by locking relays or by high pressure control trip with manual reset switch.

All the units are provided with 2.5 -3 min time delay for compressor start

50 mm Aluminum filter as standard

# OPTIONAL / STANDARD FEATURES

## MODEL WISE LIST

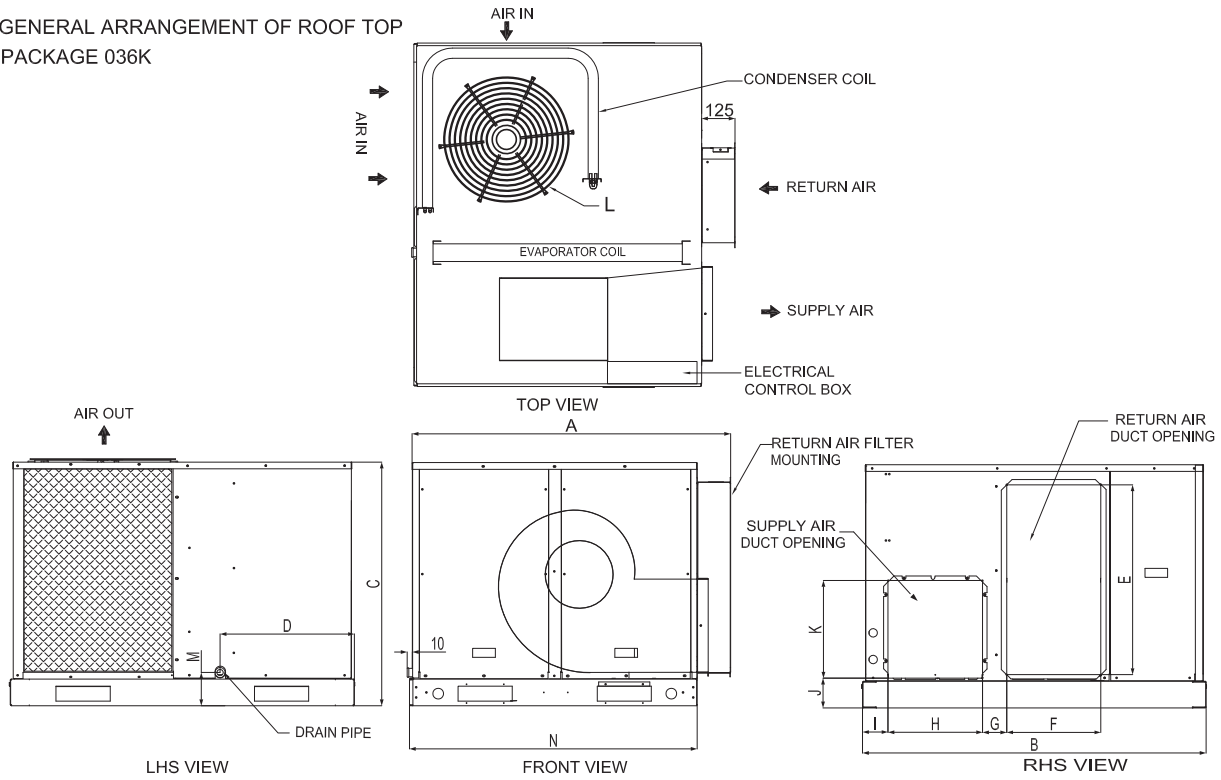
PART \ MODEL	36	48	60	72	90	120	150	180	216	240	300
<b>Package Unit Optional Accessories:</b>											
5.0 Kw Electric Heater - 1 Stage (Available for 3RTH060 to 3RTH060)	Option	Option	Option	Option	Option	Option	Option	Option	Option	Option	Option
10.0 Kw Electric Heater - 1 Stage (Available for 3RTH060 to 3RTH060)	...	...	Option	Option	Option	Option	Option	Option	Option	Option	Option
15.0 Kw Electric Heater - 1 Stage (Available for 3RTH072 to 3RTH090)	...	...	...	Option	Option	Option	Option	Option	Option	Option	Option
20.0 Kw Electric Heater - 2 Stage (Available for 3RTH120 to 3RTH150)	...	...	...	...	...	Option	Option	Option	Option	Option	Option
25.0 Kw Electric Heater - 2 Stage (Available for 3RTH180 to 3RTH216)	...	...	...	...	...	...	...	Option	Option	Option	Option
30.0 Kw Electric Heater - 2 Stage (Available for 3RTH240 to 3RTH300)	...	...	...	...	...	...	...	...	...	Option	Option
Over Load External Protection Blower Motor	Option	Option	Option	Option	Option	Option	Option	Option	Option	STD	STD
Anti Ice Thermostat	Option	Option	Option	Option	Option	Option	Option	Option	Option	Option	Option
IP55, Class F Blower Motor	Option	Option	Option	Option	Option	Option	Option	STD	STD	STD	STD
Copper Tube Copper Fins Evaporater Coil	Option	Option	Option	Option	Option	Option	Option	Option	Option	Option	Option
Hydrophilic Fins Evaporator Coil	Option	Option	Option	Option	Option	Option	Option	Option	Option	Option	Option
Stainless Steel Drain Pan	Option	Option	Option	Option	Option	Option	Option	Option	Option	Option	Option
Filter Differential Pressure Switch	Option	Option	Option	Option	Option	Option	Option	Option	Option	Option	Option
Over Load External Protecion Compressor	Option	Option	Option	Option	Option	Option	Option	Option	Option	STD	STD
Over Load External Protecion Condenser Fan	Option	Option	Option	Option	Option	Option	Option	Option	Option	Option	Option
Compressor Alternating Switch	Option	Option	Option	Option	Option	Option	Option	Option	Option	Option	Option
Hour Run Meter	Option	Option	Option	Option	Option	Option	Option	Option	Option	Option	Option
Fan Cycling Switch (On / Off)	Option	Option	Option	Option	Option	Option	Option	Option	Option	Option	Option
Low Ambient Kit	Option	Option	Option	Option	Option	Option	Option	Option	Option	Option	Option
Power Controller , Hi/Lo Voltage, Phase Loss/Reversal (Adjustable)	STD	STD	STD	STD	STD	STD	STD	STD	STD	STD	STD
Circuit Breaker Compressor(MCB)	Option	Option	Option	Option	Option	Option	Option	Option	Option	Option	Option
Circuit Breaker Cond. Fan Motor(MCB)	Option	Option	Option	Option	Option	Option	Option	Option	Option	Option	Option
Circuit Breaker Blower Motor(MCB)	Option	Option	Option	Option	Option	Option	Option	Option	Option	Option	Option
IP55, Class F Cond.Motor	Option	Option	Option	Option	STD	Option	Option	Option	STD	STD	STD
Heresite Coating For Condenser Coil	Option	Option	Option	Option	Option	Option	Option	Option	Option	Option	Option
Copper Tube Copper Fins Condenser Coil	Option	Option	Option	Option	Option	Option	Option	Option	Option	Option	Option
Pump Down System	Option	Option	Option	Option	Option	Option	Option	Option	Option	Option	Option
Dual Adjustable Pressure Switch	Option	Option	Option	Option	Option	Option	Option	Option	Option	Option	Option
Hot Gas Bypass (With Solenoid)	Option	Option	Option	Option	Option	Option	Option	Option	Option	Option	Option
Pressure Guage (Suction / Discharge)	Option	Option	Option	Option	Option	Option	Option	Option	Option	Option	Option
Roto Lock Compressor	Option	Option	Option	Option	Option	Option	Option	Option	Option	Option	Option

# MODEL DECODING

1	2/3	4	5 / 6 / 7	8	9	10	11	12/13	14	15
CAC	PRODUCT LINE	PRODUCT TYPE	CAPACITY	ELECTRIC CODE	APPLICATION	CIRCUIT	COMPRESSOR	FACTORY OPTIONS	CONTROL VOLT	SPL / FACTORY/ OPTIONS
3 CAC	RT = ROOF TOP ID = INDOOR OD= OUTDOOR ON =OUTDOOR	H = HIEER	<b>EXAMPLE</b> 012 = 12000 BTU/HR 072 = 72000 BTU/HR 300 = 300000 BTU/HR	F = 220-240V/1PH/50HZ S = 208-240V/1PH/60HZ P = 208-230V/1PH/60HZ E = 380-400V/3PH/60HZ G = 380-415V/3PH/50HZ K = 460 V/ 3PH/60HZ T = 208-230 V/ 3PH/60HZ	C = COOL ONLY E = COOL + ELE. HTR H = COOL + HP A = HP +AUX. ELE. HTR	1 = SINGLE 2 = DUAL 3 = TRIPLE 4 = QUADRUPLE	R = RECIP (R-22) S = SCROLL(R-22) T = ROTARY (R-22) E = RECIP (R407C) L = SCROLL(R407C) Y = ROTARY(R-407C) A = RECIP(R410A) B = SCROLL(R410A) C = ROTARY(R410A) W = NO COMP(R-22) X = NO COMP(R-407C) Z = NO COMP(R-410A) D = DIGIT. SCR(R410A) F = DIGIT. SCR.(R-22) Z = DIGIT. SCR(R-407C)	AA = STANDARD BA TO ZZ = NON STANDARD	X = 240 VOLTS Y = 24 VOLTS M = MICRO PROCESSOR	AW = AWAL STANDARD BA TO ZZ = NON STANDARD

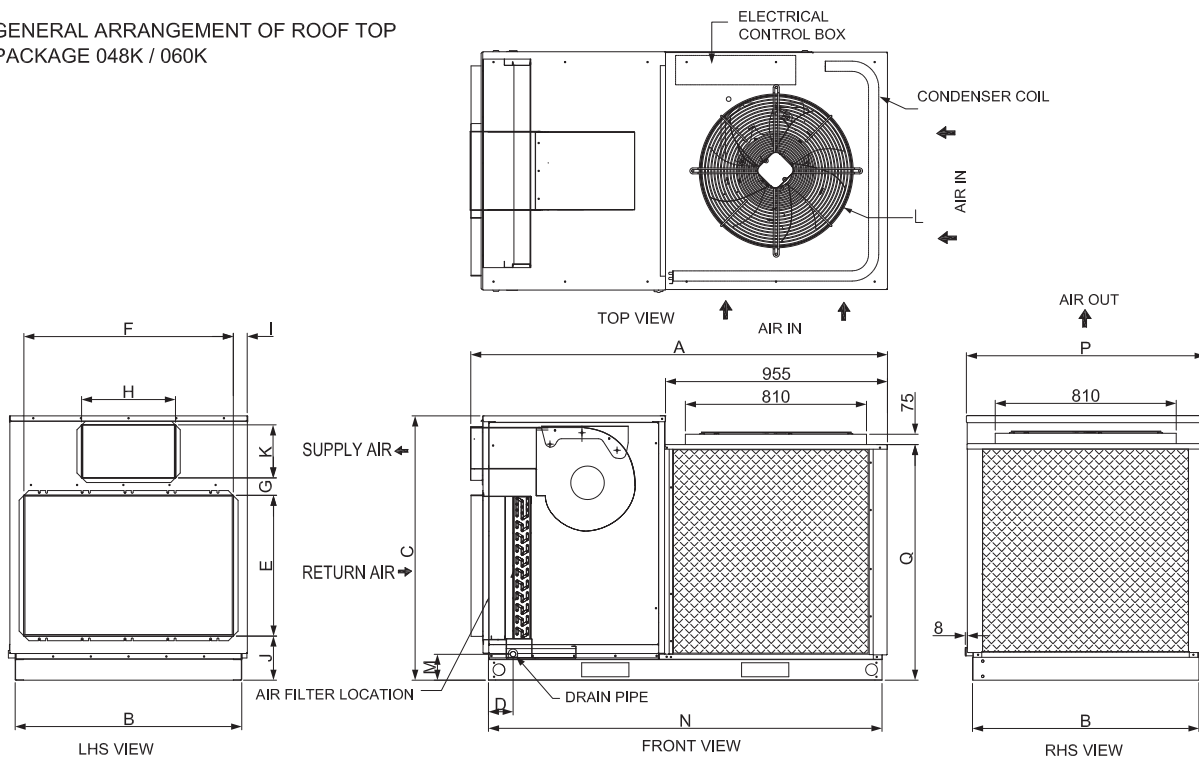
# G.A. DRAWING: 3TR - 5TR UNITS

GENERAL ARRANGEMENT OF ROOF TOP PACKAGE 036K



MODEL	A	B	C	D	E	F	G	H	I	J	K	L	M	N
3RTH036G	1195	1290	913	503	715	350	96	350	98	127	350	1 FAN-20" DIA	130	1080

GENERAL ARRANGEMENT OF ROOF TOP PACKAGE 048K / 060K



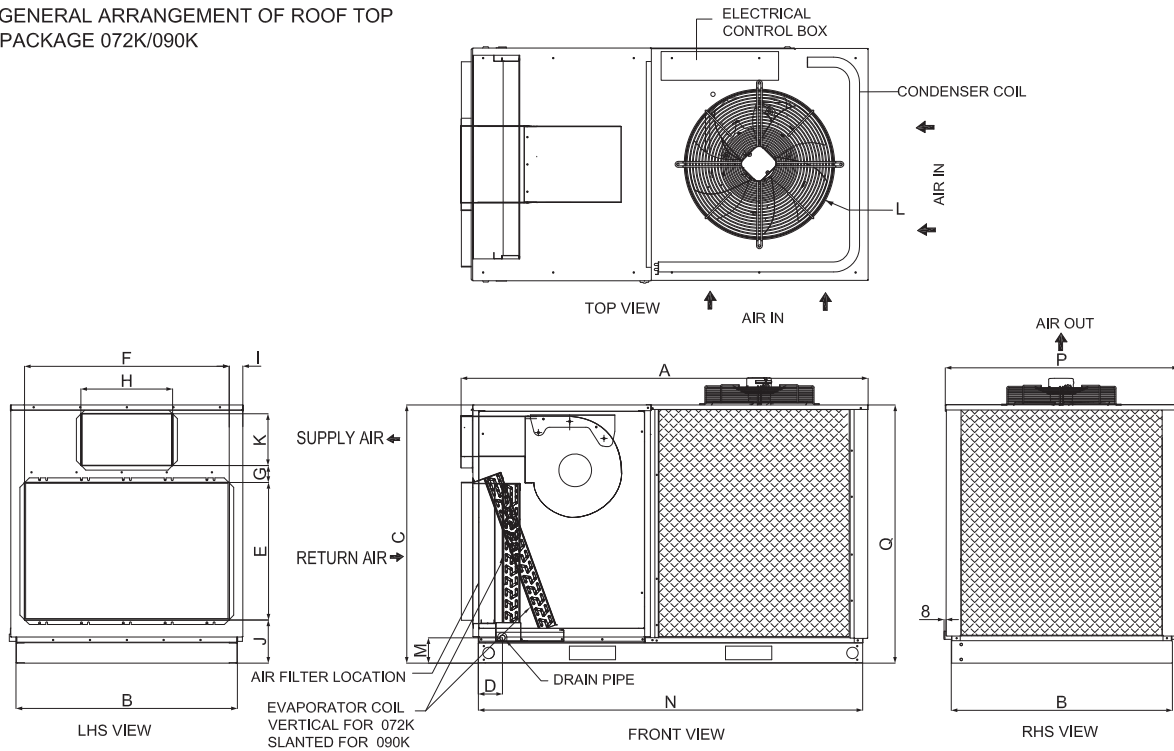
MODEL	A	B	C	D	E	F	G	H	I	J	K	L	M	N	P	Q
3RTH048G	1790	978	1049	107	562	900	120	345	62	136	185	1 FAN-24" DIA	94	1690	1024	855
3RTH060G	1790	978	1049	107	606	900	120	403	62	136	230	1 FAN-26" DIA	94	1690	1024	855

ALL DIMENSIONS ARE IN MM

LAYOUT SUBJECT TO CHANGE WITHOUT NOTICE.

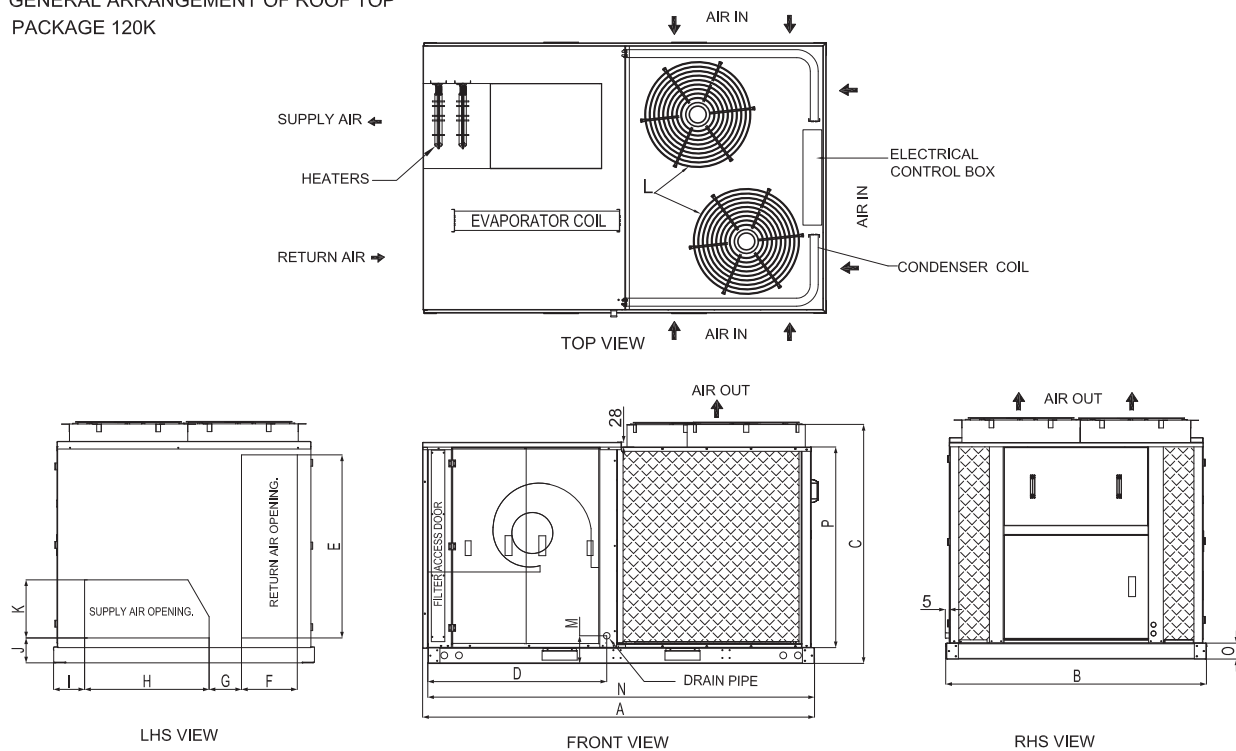
# G.A. DRAWING: 6TR - 10TR UNITS

GENERAL ARRANGEMENT OF ROOF TOP PACKAGE 072K/090K



MODEL	A	B	C	D	E	F	G	H	I	J	K	L	M	N	P	Q
3RTH072G	1790	978	1161	114	606	900	88	403	62	186	230	1 FAN-26" DIA	112	1690	1024	1161
3RTH090G	2028							476						1934		

GENERAL ARRANGEMENT OF ROOF TOP PACKAGE 120K



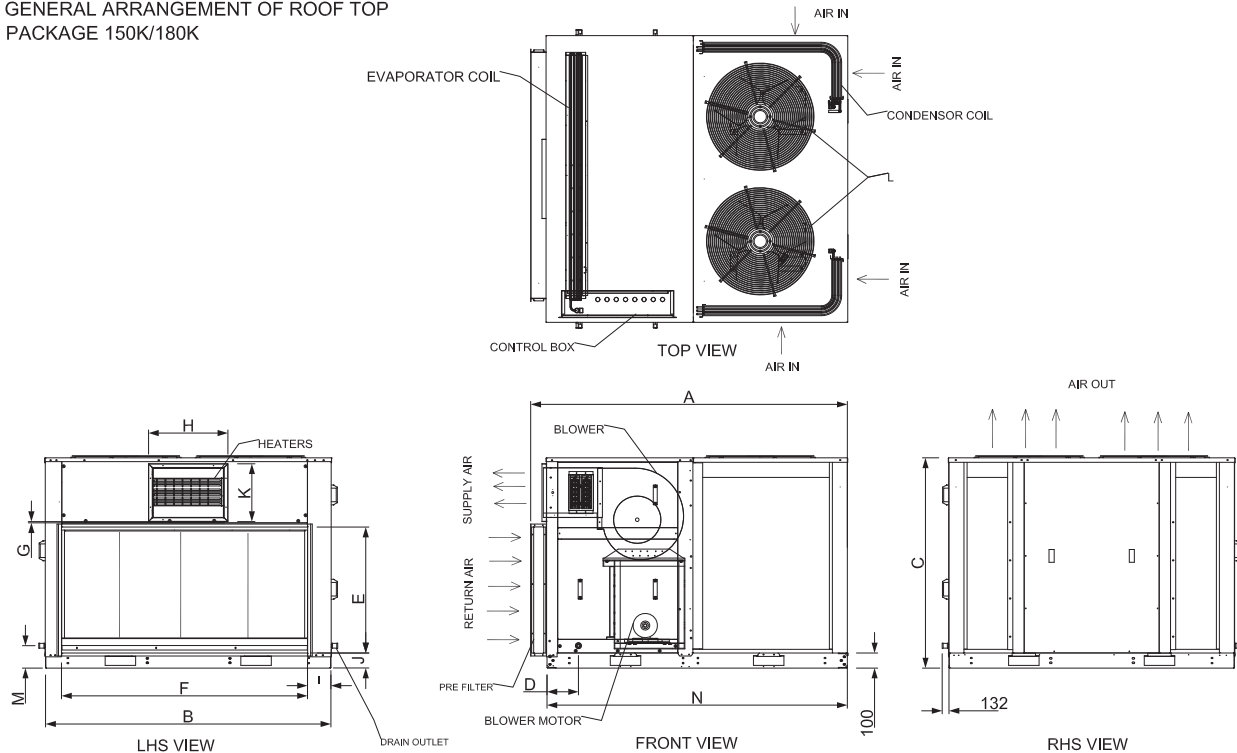
MODEL	A	B	C	D	E	F	G	H	I	J	K	L	M	N	O	P
3RTH120G	2265	1505	1383	1035	1058	322	187	720	173	144	336	2 FANS - 25" DIA	161	2235	92	1252

ALL DIMENSIONS ARE IN MM  
LAYOUT SUBJECT TO CHANGE WITHOUT NOTICE.



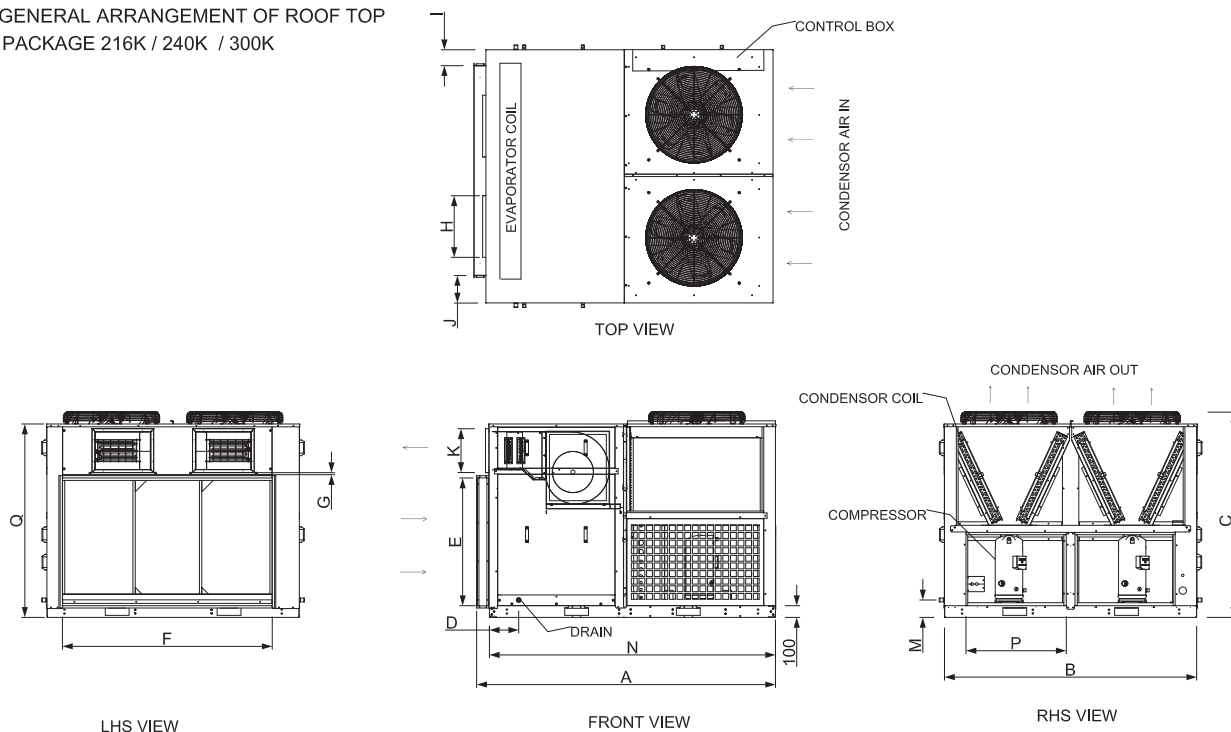
# G.A. DRAWING: 12.5TR - 25TR UNITS

GENERAL ARRANGEMENT OF ROOF TOP PACKAGE 150K/180K



MODEL	A	B	C	D	E	F	G	H	I	J	K	L	M	N
3RTH150G	2126	1900	1400	200	828	1638	28	531	155	100	385	2 FAN-26" DIA	149	2000
3RTH180G														

GENERAL ARRANGEMENT OF ROOF TOP PACKAGE 216K / 240K / 300K



MODEL	A	B	C	D	E	F	G	H	I	J	K	L	M	N	P	Q
3RTH216G	2550	2150	1755	250	1089	1789	27	525	132	230	374	2 FAN-30" DIA	149	2440	854	1650
3RTH240G																
3RTH300G																

ALL DIMENSIONS ARE IN MM  
LAYOUT SUBJECT TO CHANGE WITHOUT NOTICE.

# UNIT SPECIFICATIONS

## ENGINEERING SPECIFICATIONS : 3TR - 25TR UNITS

Engineering Specifications High EER Roof Top Package units															
Description		Unit of measurement	UNIT MODEL												
			3RTH036GC1	3RTH048GC	3RTH060GC1	3RTH072GC1	3RTH090GC1	3RTH120GC2	3RTH150GC2	3RTH180GC2	3RTH216GC2	3RTH240GC2	3RTH300GC2		
Nominal Cooling Capacity @ 35°C (T1)		Btu /Hr	34,200	47,926	60,000	69,872	96,086	121,393	143,481	174,898	221,007	245,700	279,543		
Power Consumption @ T1		Watts	3,339	4,679	5,655	6,492	9,197	11,415	13,407	17,038	21,382	23,628	27,863		
EER @ T1			10	10	11	11	10	11	11	10	10	10	10		
Cooling Capacity @ 46° (T3) *		Btu /Hr	28,084	37,400	55,786	64,608	89,250	112,282	130,280	155,254	194,581	215,871	254,464		
Power consumption @ 46° (T3) *		Watts	4,082	5,400	6,880	7,968	11,008	13,848	16,061	19,637	24,593	27,301	33,928		
Power consumption /Ton @ 46° (T3)		Kwatts/tr.	1.75	1.73	1.48	1.48	1.48	1.48	1.48	1.52	1.52	1.52	1.60		
Air Flow (Evaporator)		CFM	1,224	1,676	1,962	2,286	2,857	3,810	4,762	5,715	6,858	7,620	9,525		
External static pressure		Inch H2O g	0.2"	0.2"	0.35"	0.4"	0.4"	0.4"	0.4"	0.4"	0.4"	0.4"	0.6"		
Refrigerant Type			R407C												
Evaporator	Blower	Type	Centrifugal												
		Drive	Direct Drive	Direct Drive	Belt Drive										
		Dia x width	12" x 6"	11" x 9"	12" x 12"	12" x 12"	15" x 15"	15" x 15"	15" x 15"	15" x 15"	15" x 15" twin	15" x 15" twin	15" x 15" twin		
		Qty	1	1	1	1	1	1	1	1	1	1	1		
	Blower Motor	Power Supply	V/Ph/Hz	220-240V/1Ph/50 Hz					380-415V/3Ph/50 Hz						
		HP		1/3	3/4	1 1/3	1 1/3	1 1/3	2 2/3	2 2/3	5.00	5.00	5.00	7 1/2	
	Air filter Type		Aluminum Filter												
	Evaporator Coil	Face Area	Sq.ft	6.19	5.60	5.60	7.00	7.00	11.50	11.30	13.12	16.74	19.14	19.14	
		Tube Dia / no of row/ FPI		3/8" / 3 / 14	3/8" / 3 / 16	3/8" / 4 / 16	3/8" / 3 / 16	3/8" / 4 / 16	3/8" / 3 / 16	3/8" / 4 / 16	3/8" / 4 / 16	1/2" / 3 / 12	1/2" / 3 / 12	1/2" / 4 / 14	
	Material Tubes - Fins			CU-AL											
	Expansion valve	Type		TEX VALVE											
		Qty		1	1	1	1	1	2	2	2	2	2	2	
Supply air Dia	W X H	mm	350 x 350	345 x 185	403 x 230	403 x 230	476 x 230	720 x 336	531 x 385	531 x 385	525 x 374	525 x 374	525 x 374		
Return air Dia	W X H	mm	345 x 715	900 x 562	900 x 606	900 x 606	900 x 606	322 x 1058	1638 x 828	1638 x 828	1789 x 1089	1789 x 1089	1789 x 1089		
Condenser	Compressor	Power Supply	V/Ph/Hz	380-415V/3Ph/50 Hz											
		Type		Reciprocating	SCROLL										
		Quantity		1	1	1	1	1	2	2	2	2	2	2	
		Protection		Internal											
		Crankcase heater	Qty x Watts		-	1x70	1x70	1x70	1x70	2x70	2x70	2x90	2x90	2x90	2x90
		Min/Max Volts		342/456	342/456	342/456	342/456	342/456	342/456	342/456	342/456	342/456	342/456	342/456	342/456
	Locked Rotor Amperes	Running Rotor Amperes	Amps	45	66	74	101	111	74	101	111	118	118	174	
				6.3	8.2	9.4	11.0	13.8	9.4	11.0	13.8	16.0	17.7	26.5	
	Condenser Fan	Type		Propeller / Direct driven											
		Qty		1	1	1	1	1	2	2	2	2	2	2	
		Dia of Fan	Inch	20"	24"	26"	26"	26"	25"	26"	26"	30"	30"	30"	
	Condenser Coil	Type of coil		Corrugated al fin with Inner grooved copper coil											
Face Area		Sq.ft	13.85	15.9	15.9	18.80	18.50	14.3 x 2	14.88 x 2	14.88 x 2	9.84 x 4	9.84 x 4	9.84 x 4		
Tube Dia / no of row/ FPI			3/8" / 2 / 15	3/8" / 3 / 14	3/8" / 3 / 14	3/8" / 4 / 14	3/8" / 4 / 15	3/8" / 3 / 15	3/8" / 3 / 14	3/8" / 3 / 16	3/8" / 2 / 14	3/8" / 3 / 14	3/8" / 4 / 14		
Condensar Fan Motor	Power Supply	V/Ph/Hz	220-240/1/50					380-415/3/50		220-240/1/50			380-415/3/50		
	HP		1/3	1/3	1/2	1/2	1 1/2	1/2	1/2	1/2	1 1/2	1 1/2	1 1/2		
	Qty	nos	1	1	1	1	1	2	2	2	2	2	2		
Dimensions	Length	mm	1195	1790	1790	1790	2028	2265	2126	2126	2550	2550	2550		
	Width		1290	978	978	978	978	1505	1900	1900	2150	2150	2150		
	Height		913	1049	1049	1161	1161	1383	1400	1400	1755	1755	1755		
Aproximate Unit Weight		LB / KG	506 / 230	948 / 430	970 / 440	1212 / 550	1300 / 590	1543 / 700	2101 / 953	2200 / 998	3600 / 1633	3670 / 1665	3760 / 1701		
Note: As a result of continuous reasearch & development, the above specifications are subject to change without notice, need to contact our sales team time to time *Cooling Capacity & Power Consumption / Ton are rated as per ESMA T3 condition															

# UNIT SPECIFICATIONS

## ELECTRICAL DATA FOR 3TR - 25TR - 50 Hz UNITS

### 380-415V-3PH-50HZ ("G" VOLTAGE) POWER SUPPLY

MODEL	V-Ph-Hz	OPERATING VOLTAGE		COMPRESSOR				CONDENSER MOTOR			BLOWER MOTOR		HEATER (OPTION)		MCA (COOL)	MCA (HEAT)	MOCP (COOL)	MOCP (HEAT)
		MIN	MAX	TYPE	RLA	LRA	QTY	HP	FLA	QTY	HP	FLA	KW	AMPS	AMPS	AMPS	AMPS	AMPS
3RTH036G	380-415-3-50	342	456	REC	5.2	39	1	1/3	1.7	1	1/3	2.5	5	7.6	11	12	15	15
3RTH048G	380-415-3-50	342	456	SCR	8.2	66	1	1/3	2.0	1	3/4	4.4	5	7.6	17	14	25	20
3RTH060G	380-415-3-50	342	456	SCR	9.4	74	1	1/2	3.0	1	1 1/3	2.7	10	15.2	18	22	30	25
3RTH072G	380-415-3-50	342	456	SCR	11.0	101	1	1/2	3.0	1	1 1/3	2.7	15	22.8	20	32	30	35
3RTH090G	380-415-3-50	342	456	SCR	13.8	111	1	1 1/2	3.0	1	1 1/3	2.7	15	22.8	23	32	35	35
3RTH120G	380-415-3-50	342	456	SCR	9.4	74	2	1/2	3.0	2	2 2/3	4.8	20	30.4	30	43	40	50
3RTH150G	380-415-3-50	342	456	SCR	11.0	101	2	1/2	3.0	2	2 2/3	4.8	20	30.4	36	43	45	50
3RTH180G	380-415-3-50	342	456	SCR	13.8	111	2	1/2	3.0	2	5	7.3	25	38.0	45	55	60	60
3RTH216G	380-415-3-50	342	456	SCR	16.0	118	2	1 1/2	3.0	2	5	7.3	25	38.0	50	55	65	60
3RTH240G	380-415-3-50	342	456	SCR	17.7	118	2	1 1/2	3.0	2	5	7.3	30	45.6	54	65	70	70
3RTH300G	380-415-3-50	342	456	SCR	26.5	174	2	1 1/2	3.0	2	7 1/2	10.5	30	45.6	77	68	105	80

**NOTE:**

REC - Reciprocating compressor, SCR- Scroll compressor, RLA-Running Load Amps, LRA-locked Rotor Amps, QTY-Quantity

FLA-Full Load Amps, MCA-Minimum Circuit Amps, MOCP-Maximum Over Current Protection, MOCP-Maximum over current protection

# UNIT SPECIFICATIONS

## COOLING PERFORMANCE DATA FOR 3TR

Model	Evaporator CFM	Dry Bulb Temp. F	Wet Bulb Temp. F	85.0			95.0			105.0			115.0			120.0			125.0		
				Capacity Btuh	Sensible capacity	Power Input Watt	Capacity Btuh	Sensible capacity	Power Input Watt	Capacity Btuh	Sensible capacity	Power Input Watt	Capacity Btuh	Sensible capacity	Power Input Watt	Capacity Btuh	Sensible capacity	Power Input Watt	Capacity Btuh	Sensible capacity	Power Input Watt
3RTH036	1048	84.2	66.2	38536	37523	3415	36305	36532	3721	34890	36036	4276	26118	23164	3796	32756	23643	5101	30956	23206	5251
			69	34157	24540	2809	33373	24297	3174	32613	23812	3709	31220	16392	4184	29466	15965	4260	27579	15396	4347
			67	34081	32948	2836	33306	32453	3206	32613	31957	3750	31220	21805	4233	29372	21223	4294	27507	20642	4375
		82	65	34058	35135	2871	33285	34640	3267	32613	33897	3878	31203	22511	4368	29354	22085	4429	27492	21605	4417
			63	34043	36577	2964	33269	36251	3376	32596	36332	4099	31180	23426	4612	29467	22972	4695	27478	22459	4736
			69	32569	21254	2706	31823	21021	3080	31169	20555	3508	29563	14249	4003	27862	13839	4069	26066	13429	4143
		80	67	32549	25283	2729	31806	24788	3105	31155	24292	3609	29529	16871	4029	27836	16435	4099	26049	15853	4167
			65	32489	32425	2758	31750	32177	3149	31109	31434	3739	29572	20977	4183	27918	20578	4255	26134	20335	4310
			63	32473	34159	2857	31732	34365	3253	31093	33621	3952	29552	21867	4417	27902	21441	4491	26125	20961	4548
		78	69	30691	18223	2571	29991	17999	2926	29371	17550	3333	27969	12403	3740	26367	12008	3881	24796	11614	3966
			67	30412	22541	2577	29719	22294	2933	29106	21799	3409	27752	15259	3827	26311	14824	3911	24613	14243	3969
			65	30698	25256	2634	30001	24760	2998	29384	24265	3558	29044	17291	4138	27384	16709	4203	25631	16128	4257
		76	63	30651	32150	2715	29958	31654	3093	29348	31159	3756	29147	19010	4386	27365	18429	4434	25760	17848	4513
			69	30000	15632	2542	29316	15416	2893	28709	14984	3294	27303	10694	3690	25733	10440	3751	24931	10187	3954
			67	29765	19515	2550	29088	19278	2903	28487	18803	3373	27095	13263	3777	25543	12845	3838	24050	12427	3912
		76	65	28572	22545	2478	28718	22545	2902	28126	22050	3444	26879	15410	3871	25344	14974	3932	23180	14247	3890
			63	27700	24733	2477	28680	24980	2988	28090	24485	3627	26842	17129	4072	25456	16693	4157	22485	15676	3969
			69	30000	15632	2542	29316	15416	2893	28709	14984	3294	27303	10694	3690	25733	10440	3751	24931	10187	3954
	1224	84.2	66.2	41436	40347	3672	39038	39282	4001	37516	38749	4597	<b>28084</b>	<b>24907</b>	<b>4082</b>	35221	25423	5485	33286	24952	5646
			69	36728	26387	3020	35885	26126	3413	35068	25604	3988	33570	17626	4499	31684	17167	4580	29655	16555	4674
			67	36647	35428	3049	35813	34895	3447	35068	34362	4033	33570	23446	4551	31583	22821	4618	29578	22195	4705
		82	65	36622	37780	3087	35790	37247	3513	35068	36448	4170	33551	24206	4697	31564	23748	4762	29561	23231	4749
			63	36605	39330	3187	35773	38980	3630	35049	39067	4408	33527	25190	4959	31685	24701	5049	29546	24149	5092
			69	35020	22854	2910	34218	22603	3311	33515	22102	3772	31789	15321	4305	29960	14880	4375	28028	14439	4454
		80	67	34999	27186	2934	<b>34200</b>	<b>26653</b>	<b>3339</b>	33500	26121	3881	31752	18141	4332	29931	17672	4407	28009	17047	4481
			65	34935	34866	2965	34140	34599	3387	33450	33800	4020	31798	22556	4497	30019	22127	4575	28101	21865	4635
			63	34917	36730	3072	34120	36951	3498	33433	36152	4249	31776	23513	4749	30002	23055	4829	28092	22538	4890
		78	69	33001	19594	2765	32248	19353	3147	31582	18871	3584	30074	13337	4021	28352	12912	4173	26663	12488	4265
			67	32701	24238	2771	31956	23972	3154	31297	23440	3665	29841	16408	4115	28291	15939	4206	26466	15315	4267
			65	33009	27157	2832	32259	26624	3224	31596	26091	3826	31230	18592	4449	29445	17967	4520	27560	17342	4577
		76	63	32958	34570	2919	32213	34037	3326	31557	33504	4039	31341	20441	4716	29424	19816	4768	27699	19191	4853
			69	32258	16808	2733	31523	16576	3111	30870	16111	3541	29358	11499	3967	27670	11226	4033	26807	10954	4252
			67	32005	20994	2742	31277	20729	3122	30631	20218	3627	29134	14261	4061	27466	13812	4127	25860	13362	4206
		76	65	30722	24242	2665	30880	24242	3120	30243	23709	3703	28903	16570	4163	27252	16101	4228	24924	15319	4183
			63	29785	26594	2663	30839	26861	3212	30205	26328	3900	28862	18419	4379	27372	17950	4470	24177	16856	4268
			69	32258	16808	2733	31523	16576	3111	30870	16111	3541	29358	11499	3967	27670	11226	4033	26807	10954	4252
1375	84.2	66.2	42265	41154	3745	39819	40067	4081	38267	39524	4689	28646	25405	4164	35926	25931	5594	33952	25452	5759	
		69	37462	26914	3080	36603	26648	3481	35769	26116	4068	34241	17979	4589	32318	17510	4672	30248	16886	4767	
		67	37379	36136	3110	36529	35593	3516	35769	35050	4113	34242	23915	4642	32215	23277	4710	30169	22639	4799	
	82	65	37354	38536	3148	36506	37992	3583	35769	37177	4253	34222	24690	4791	32195	24223	4857	30152	23696	4844	
		63	37337	40116	3250	36488	39759	3702	35750	39848	4496	34197	25694	5059	32319	25195	5150	30137	24632	5194	
		69	35720	23311	2968	34902	23056	3378	34186	22544	3848	32424	15628	4391	30559	15178	4463	28589	14728	4543	
	80	67	35698	27730	2993	34884	27186	3406	34170	26643	3958	32387	18504	4419	30530	18025	4495	28569	17388	4571	
		65	35633	35563	3025	34823	35291	3454	34119	34476	4101	32434	23007	4587	30619	22570	4667	28663	22303	4727	
		63	35616	37465	3133	34803	37690	3568	34102	36875	4334	32412	23983	4844	30602	23516	4926	28654	22989	4988	
	78	69	33661	19986	2820	32893	19740	3210	32214	19249	3655	30676	13603	4101	28919	13170	4257	27196	12738	4350	
		67	33355	24723	2827	32595	24451	3217	31923	23909	3738	30438	16736	4197	28857	16258	4290	26995	15621	4353	
		65	33669	27700	2889	32904	27156	3288	32228	26613	3902	31855	18964	4538	30034	18326	4610	28112	17689	4669	
	76	63	33617	35261	2977	32858	34718	3392	32188	34174	4120	31968	20850	4810	30013	20212	4863	28253	19575	4950	
		69	32903	17145	2788	32153	16908	3173	31488	16434	3612	29945	11729	4047	28224	11451	4113	27344	11173	4337	
		67	32645	21404	2797	31903	21143	3184	31244	20622	3700	29717	14546	4142	28015	14088	4209	26378	13629	4290	
	76	65	31337	24727	2718	31497	24727	3183	30848	24184	3777	29481	16901	4246	27797	16423	4313	25423	15626	4266	
		63	30381	27126	2717	31455	27398	3277	30809	26854	3978	29439	18787	4466	27919	18309	4560	24661	17193	4353	

# UNIT SPECIFICATIONS

## COOLING PERFORMANCE DATA FOR 4TR

Model	Evaporator CFM	Dry Bulb Temp. F	Wet Bulb Temp. F	85.0			95.0			105.0			115.0			125.0			125.0			
				Capacity Btu/h	Sensible capacity Btu/h	Power Input Watt	Capacity Btu/h	Sensible capacity Btu/h	Power Input Watt	Capacity Btu/h	Sensible capacity Btu/h	Power Input Watt	Capacity Btu/h	Sensible capacity Btu/h	Power Input Watt	Capacity Btu/h	Sensible capacity Btu/h	Power Input Watt	Capacity Btu/h	Sensible capacity Btu/h	Power Input Watt	
				3RT1048																		
1419	84.2	66.2	44916	32600	3980	42141	31801	4319	38915	31001	4769	36278	32002	5238	35235	29669	5487	34048	29136	5775		
		69	51291	29734	4217	48114	28846	4676	44423	27958	5052	41406	27070	5549	40211	26774	5813	38822	26182	6119		
		82	67	50418	33167	4195	47306	32260	4553	43740	31353	5030	40737	30446	5523	39571	29842	5785	38284	29237	6000	
			65	49497	35966	4172	46139	35059	4529	41730	33547	4962	38844	32943	5451	37851	32338	5711	37712	32036	6059	
			63	47855	38462	4143	44348	37555	4500	38905	35742	4892	36336	34835	5375	35335	34532	5630	34379	33828	5925	
	69		52512	25454	4197	47071	25611	4555	45982	25043	5074	40804	23905	5525	39635	23337	5788	38335	22768	6002		
	80	67	48877	30839	4181	46488	30032	4539	43294	28823	5014	40366	28218	5508	39172	27614	5768	37948	27009	6071		
		65	48996	33738	4159	45407	32831	4509	41115	31319	4941	38383	30413	5429	37312	30110	5687	36292	29203	5985		
		63	46885	36234	4124	43703	35025	4481	38333	33211	4872	35813	32607	5353	34833	32002	5607	33888	31398	5901		
		69	49913	23175	4182	46518	22354	4530	44567	21807	5057	41541	20886	5554	39191	20439	5769	37961	19892	6072		
	78	67	49105	28369	4161	45774	27463	4518	42627	26558	4992	39768	25652	5484	38641	25390	5745	37499	24747	6046		
		65	48247	31207	4139	44883	30301	4495	40689	28789	4927	37992	28185	5412	36938	27580	5670	35934	26976	5968		
		63	46429	33704	4112	43280	32797	4468	37961	30084	4859	35474	30077	5338	34507	29774	5592	33586	29170	5884		
		69	49113	20130	4161	45775	19602	4518	43876	19075	5033	40910	18294	5529	39738	18020	5792	38436	17403	6096		
	76	67	48328	24807	4141	45054	23938	4497	41967	23089	4969	39163	22489	5459	38002	21910	5719	37008	21330	6019		
		65	47492	28677	4120	44284	27771	4475	40057	26561	4905	37415	25655	5389	36383	25382	5645	35402	24748	5941		
		63	45820	31778	4097	42730	30569	4451	37487	28756	4840	35051	28151	5317	34107	27547	5570	33209	26942	5862		
		69	49113	20130	4161	45775	19602	4518	43876	19075	5033	40910	18294	5529	39738	18020	5792	38436	17403	6096		
	1676	84.2	66.2	45305	33609	4103	43445	32784	4452	40119	31960	4916	37400	31136	5400	36325	30586	5657	35101	30037	5954	
			69	52877	30653	4348	49602	29738	4717	45797	28823	5209	42686	27907	5721	41455	27602	5993	40023	26992	6308	
			82	67	51978	34192	4325	48769	33258	4694	45093	32323	5185	41997	31388	5694	40795	30764	5964	39468	30141	6278
				65	51028	37078	4301	47666	36143	4669	43021	34585	5116	40148	33962	5620	39021	33338	5887	38878	33027	6246
				63	49057	39652	4271	45719	38717	4639	40108	36847	5044	37460	35912	5541	36427	35600	5805	35442	34977	6109
		69		52074	27282	4327	48527	26403	4696	46477	25817	5231	42066	24645	5696	40861	24059	5967	39521	23472	6281	
80		67	51419	31896	4311	47926	30961	4679	44623	29714	5169	41615	29091	5678	40384	28488	5946	39122	27944	6259		
		65	50512	34781	4288	46863	33846	4648	42387	32288	5094	39570	31353	5596	38465	31041	5863	37415	30107	6171		
		63	48335	37355	4252	45054	36108	4619	39519	34239	5023	36921	33615	5518	35910	32992	5781	34946	32369	6083		
		69	51457	23891	4311	47956	23045	4680	45946	22481	5213	42826	21635	5726	40403	21071	5947	39136	20507	6280		
78		67	50624	29246	4290	47189	28313	4658	43846	27379	5146	40997	26446	5653	39836	26134	5922	38659	25512	6233		
		65	49739	32173	4267	46374	31238	4634	41947	29680	5079	39167	29056	5580	38080	28433	5845	37045	27810	6152		
		63	47865	34746	4239	44619	33812	4606	39135	31942	5009	36571	31007	5503	35575	30695	5764	34625	30072	6066		
		69	50632	20752	4290	47191	20209	4657	46233	19665	5189	42176	18850	5700	40967	18578	5971	39625	18034	6285		
76		67	49823	25575	4269	46447	24678	4636	43265	23782	5123	40375	23185	5628	39240	22587	5896	38153	21990	6205		
		65	48961	29564	4247	45653	28529	4613	41295	27383	5057	38572	26448	5555	37509	26136	5820	36497	25513	6125		
		63	47238	32761	4224	44051	31515	4589	38647	29645	4990	36135	29022	5482	35162	28398	5742	34236	27775	6043		
		69	50632	20752	4290	47191	20209	4657	46233	19665	5189	42176	18850	5700	40967	18578	5971	39625	18034	6285		
1835		84.2	66.2	47231	34281	4185	44313	33440	4541	40921	32999	5015	38148	31759	5508	37052	31198	5770	36083	30638	6073	
			69	53034	31267	4435	50594	30333	4812	46713	29399	5313	43540	28465	5835	42284	28154	6113	40823	27532	6434	
			82	67	53017	34876	4412	49744	33923	4788	45995	32969	5289	42837	32015	5808	41611	31380	6084	40257	30744	6404
				65	52048	37819	4387	48517	36866	4762	43881	35276	5218	40951	34641	5732	39802	34005	6005	39656	33687	6371
				63	50038	40445	4358	46634	39491	4732	40910	37584	5144	38209	36630	5652	37156	36312	5921	36151	35677	6231
		69		53115	27828	4414	49498	26931	4790	47406	26333	5336	42907	25138	5810	41678	24540	6086	40311	23942	6406	
	80	67	52448	32534	4397	48885	31580	4773	45515	30309	5273	42447	29673	5792	41191	29037	6065	39904	28401	6384		
		65	51522	35477	4373	47800	34523	4741	43235	32034	5196	40361	31980	5708	39235	31662	5980	38163	30709	6294		
		63	49302	38102	4337	45855	36830	4712	40309	34023	5123	37659	34288	5629	36628	33652	5896	35645	33016	6205		
		69	52486	24369	4397	48916	23506	4773	46885	22931	5318	43663	22068	5840	41211	21483	6066	39918	20918	6385		
	78	67	51636	29831	4376	48133	28879	4751	44825	27927	5249	41817	26975	5766	40633	26667	6041	38432	26022	6358		
		65	50734	32816	4353	47302	31863	4727	42786	30273	5181	39951	29637	5691	38842	29002	5982	37786	28366	6275		
		63	48823	35441	4324	45511	34488	4698	39918	32581	5109	37303	31627	5613	36286	31309	5880	35317	30673	6187		
		69	51645	21167	4376	48135	20613	4750	46138	20058	5293	43019	19227	5814	41786	18949	6090	40417	18395	6410		
	76	67	50819	26096	4355	47376	25172	4729	44130	24258	5206	41182	23648	5741	40024	23039	6014	38916	22430	6330		
		65	49940	30156	4332	46566	29202	4705	42121	27931	5158	38344	26977	5666	38259	26519	5936	37227	26023	6247		
		63	48182	32417	4308	44932	32145	4681	39420	30238	5089	36857	29602	5592	35885	28946	5857	34921	28331	6164		

# UNIT SPECIFICATIONS

## COOLING PERFORMANCE DATA FOR 5TR

Model	Evaporator or CFM	Dry Bulb Temp. F	Wet Bulb Temp. F	85F			95F			105F			115F			125F			135F		
				Capacity Btu/h	Sensible capacity Btu/h	Power Input Watt	Capacity Btu/h	Sensible capacity Btu/h	Power Input Watt	Capacity Btu/h	Sensible capacity Btu/h	Power Input Watt	Capacity Btu/h	Sensible capacity Btu/h	Power Input Watt	Capacity Btu/h	Sensible capacity Btu/h	Power Input Watt	Capacity Btu/h	Sensible capacity Btu/h	Power Input Watt
				3RT1-060																	
1300	84.2	66.2	59764	36983	5120	56554	34865	5561	54055	33737	6114	51322	32635	6720	48627	32393	7003	47025	31153	7043	
		69	60425	30002	5135	57194	29207	5577	55373	28650	6154	51892	27953	6739	50675	27141	7023	46968	25838	7037	
		67	59161	33006	5106	55980	32776	5546	53502	31763	6097	50821	30861	6702	49437	30418	6985	46657	29226	7024	
		65	57480	35351	5070	54375	34346	5508	50494	33118	6010	47807	32342	6606	46495	31962	6886	43747	30791	6926	
	63	55900	36797	5035	52769	35914	5471	47425	34472	5924	44792	33823	6510	43554	33505	6787	40639	32356	6827		
	80	69	59795	27349	5120	56584	26288	5561	55576	26076	6160	51339	24804	6719	50136	24393	7002	47040	23384	7041	
		67	58558	31819	5091	55406	30691	5530	52948	29789	6090	50320	28887	6694	49046	28443	6866	46289	27299	7006	
		65	56913	33006	5057	53834	32305	5493	49952	31141	5994	47333	30369	6588	45965	29950	6867	43358	28671	6907	
		63	55268	34792	5022	52262	33919	5456	46957	32492	5908	44346	31850	6493	42526	31537	6769	40432	30442	6809	
	78	69	58991	24536	5100	55817	23514	5540	54527	23310	6137	51371	22290	6720	50021	21978	7004	47069	21041	7043	
		67	57774	29160	5072	54658	28056	5510	52230	27172	6057	48418	26289	6659	47978	25896	6940	45460	24798	6980	
		65	56265	30681	5038	53217	29997	5473	49370	28849	5972	46689	28090	6564	45246	27719	6842	42751	26663	6882	
		63	54756	32803	5004	51776	31938	5437	46509	30525	5887	43921	29890	6469	42516	29591	6744	40045	28538	6785	
	76	69	58186	21724	5081	55050	20740	5519	54077	20543	6114	51403	19757	6721	49603	19564	7005	47097	18699	7044	
		67	56990	26501	5053	53911	25420	5489	51512	24556	6034	48515	23691	6633	46912	23270	6914	44631	22278	6964	
		65	55617	28557	5020	52800	27689	5453	48787	26557	5950	46006	25910	6539	46059	25447	6817	42144	24496	6867	
		63	54243	30613	4986	51289	29958	5417	46062	28558	5865	43497	27930	6445	42105	27625	6720	39658	26635	6760	
	1902	84.2	66.2	64902	42127	5243	61434	41187	5693	59865	40248	6257	50786	39308	6880	54473	38691	7169	51104	37423	7207
			69	65263	35283	5250	61790	34215	5701	59597	33303	6266	50098	32695	6880	54774	32394	7179	51389	31148	7217
			67	64146	36500	5225	60717	36403	5674	57976	37620	6236	55127	36681	6857	53830	36065	7145	50501	34863	7183
			65	62805	42553	5196	59246	41622	5643	56565	40883	6202	53775	39665	6819	52389	39124	7106	49558	37920	7169
		63	61065	45607	5166	57775	44841	5612	55154	43745	6168	52423	42649	6782	50945	42184	7068	48222	40878	7154	
		80	69	64474	31502	5232	61029	30618	5681	58277	29734	6244	55409	29145	6866	54102	28653	7154	50762	27963	7193
			67	63389	36972	5207	60000	35619	5655	57296	34993	6215	54467	34053	6834	53187	33428	7121	49899	32302	7160
65			61821	40091	5177	58505	38638	5623	55852	38055	6190	53094	36959	6795	51601	36493	7081	48842	34806	7168	
63			60253	43110	5147	57010	42057	5591	54418	41118	6145	51721	39885	6756	50204	36562	7042	47860	38478	7176	
78		69	63561	28067	5210	60162	27079	5658	57443	26364	6219	54614	25659	6838	53327	25380	7125	50035	24201	7236	
		67	62504	33441	5186	59155	32364	5632	56479	31600	6190	53894	30980	6806	52281	30228	7092	49192	29033	7203	
		65	61033	36683	5158	57754	35819	5602	54374	34732	6135	52485	33959	6770	50908	33574	7056	48707	32438	7190	
		63	59562	40536	5130	56352	39273	5572	52269	37864	6090	51116	37237	6734	49530	36934	7019	48252	35848	7178	
76		69	62648	24632	5188	59295	23539	5635	56610	22993	6193	53819	22173	6809	52552	21907	7096	49008	20839	7207	
		67	61619	30009	5165	58310	29108	5609	55671	28207	6165	52921	27306	6779	51375	27013	7064	48485	25764	7175	
		65	60245	33676	5139	57003	32799	5582	52896	31409	6090	51716	30958	6745	50215	30654	7030	47572	23296	7141	
		63	58872	37742	5113	55626	36489	5554	50721	34610	6015	48510	34610	6711	48056	34257	6985	46957	33829	7107	
2081		84.2	66.2	66039	45017	5270	62520	43627	5722	59701	42591	6289	56776	41888	6916	55433	41546	7205	52009	39841	7317
			69	66338	37299	5276	62801	36287	5729	59973	35449	6266	57261	34601	6923	56100	33909	7213	52899	32768	7325
			67	65258	41927	5251	61774	40711	5703	58867	40015	6268	56093	38972	6882	54770	38400	7181	51385	36999	7292
			65	63731	45413	5223	60319	44196	5673	57591	43327	6235	54754	42294	6855	53462	41858	7143	50158	40229	7254
		63	62203	48959	5195	58863	47692	5642	56194	46209	6202	53416	45596	6819	52154	45255	7106	48930	43469	7217	
		80	69	65519	33328	5257	62022	32347	5708	59229	31366	6274	56319	30712	6899	54694	30072	7188	51594	29008	7299
			67	64476	38838	5233	61029	37795	5683	58273	37099	6246	55410	36066	6888	54107	35374	7156	50761	34157	7267
	65		62932	42410	5204	59960	41193	5652	56863	40324	6212	54258	38281	6831	52785	38771	7118	49621	37305	7229	
	63		61388	46983	5175	58900	44592	5621	55453	43549	6179	52706	42506	6793	51462	42167	7079	48282	40451	7190	
	78	69	64693	29423	5235	61141	28478	5685	58382	27885	6248	55509	27054	6870	54202	26584	7158	50851	25618	7269	
		67	63573	35236	5212	60171	34217	5660	57452	33370	6221	54623	32515	6840	53339	31848	7127	50041	30727	7238	
		65	62122	39066	5184	58788	37947	5631	56124	37001	6189	53351	36053	6805	51975	35547	7091	49467	34412	7226	
		63	60671	42893	5157	57405	41676	5602	54797	40633	6158	52079	39990	6770	50609	38247	7056	48900	38099	7214	
	76	69	63967	26519	5213	60261	24609	5661	57535	24003	6222	54899	23397	6841	53410	22907	7129	50109	22228	7240	
		67	62871	31639	5190	59312	30640	5637	56031	29640	6196	53835	28973	6812	52571	28322	7088	48321	27296	7208	
		65	61313	35721	5165	58016	34700	5610	55386	33679	6166	52643	32824	6779	51163	32322	7065	48426	30546	7224	
		63	59855	39803	5140	56721	38760	5583	54140	37717	6137	51451	36874	6747	49744	36327	7032	48056	35270	7239	

# UNIT SPECIFICATIONS

## COOLING PERFORMANCE DATA FOR 6TR

Model	Evaporator or CHW	Dry Bulb Temp. F	Wet Bulb Temp. F	85F			95F			105F			115F			120F			125F		
				Capacity Btu/h	Sensible capacity Btu/h	Power Input Watt	Capacity Btu/h	Sensible capacity Btu/h	Power Input Watt	Capacity Btu/h	Sensible capacity Btu/h	Power Input Watt	Capacity Btu/h	Sensible capacity Btu/h	Power Input Watt	Capacity Btu/h	Sensible capacity Btu/h	Power Input Watt	Capacity Btu/h	Sensible capacity Btu/h	Power Input Watt
36 TRH072	1620	R2	66.2	70183	43682	5883	66389	42398	6394	62795	41435	7045	59207	40151	7772	57874	39509	8165	57488	38867	8582
			69	70362	36659	5886	66551	35414	6398	65103	35102	7111	61168	33857	7842	59788	33385	8238	59392	32922	8656
			67	68994	40995	5854	65262	39711	6363	61731	38748	7012	58205	37464	7736	56897	36822	8129	56530	36341	8543
			65	67089	43460	5813	63345	42584	6320	58241	41078	6908	54910	39794	7625	53677	35233	8014	53338	36671	8424
		63	65184	45924	5773	61427	45457	6277	54751	43408	6805	51615	42124	7514	50457	41643	7899	50146	41001	8305	
		69	69140	32930	5856	65392	31723	6366	63760	31421	7076	60117	30213	7804	58762	29911	8199	58377	29308	8616	
		67	67805	38309	5824	64135	37025	6322	60667	36062	6878	57204	34778	7700	55520	34136	8081	55552	33815	8504	
		65	65946	40796	5785	62155	40157	6290	57240	38392	6876	53969	37108	7580	52758	36626	7978	52428	36145	8386	
		63	64088	43283	5746	60176	43289	6248	53813	40722	6774	50733	39438	7480	48596	39117	7864	48294	38475	8269	
		69	67916	29392	5826	64014	28228	6334	62641	27937	7040	59063	26914	7766	57734	26483	8160	57360	25901	8575	
		67	66617	34787	5795	62793	33683	6300	59602	32740	6944	56201	31483	7663	54941	31008	8053	54594	30540	8464	
		65	65019	37775	5759	61178	37143	6262	56431	35468	6845	53210	34197	7567	52019	33799	7943	51698	33244	8351	
	63	63422	40764	5723	59560	40603	6223	53259	38195	6747	50218	36912	7451	48027	36591	7833	48803	35949	8237		
	69	66991	25854	5796	62635	24734	6301	61523	24454	7004	58009	23614	7728	56706	23054	8120	56343	22494	8534		
	67	65429	31264	5766	61451	30341	6269	58537	29418	6910	55199	28188	7626	53962	27880	8015	53625	27265	8425		
	65	64093	34755	5733	60197	34129	6234	55621	32544	6815	52451	31287	7524	51280	30972	7909	50969	30344	8315		
	63	62757	38245	5701	58943	37916	6199	52705	35669	6721	49703	34385	7422	48598	34064	7803	48313	33423	8205		
	69	77054	51761	6041	72487	50424	6563	69013	49087	7229	64698	48195	7968	63141	47303	8369	62706	46558	8791		
	67	76736	42882	6033	72177	41807	6554	70772	41375	7282	66256	40287	8026	64749	39645	8428	64299	38989	8852		
	65	75967	48239	6008	71180	46901	6527	67543	45787	7190	63446	44672	7927	62008	44004	8326	61584	43558	8747		
	63	73919	52158	5976	69620	50820	6494	64045	48926	7084	60255	47811	7825	58888	47142	8221	58492	46585	8638		
	69	75241	38367	5997	70769	37110	6516	69408	36690	7240	64979	35852	7981	63504	35013	8382	63066	34594	8804		
	67	74281	44716	5974	69872	43379	6492	66073	42487	7151	62285	41150	7886	60874	40704	8284	60463	40258	8703		
	65	72482	48635	5943	68357	47298	6459	62759	45515	7057	59156	44400	7785	57816	43731	8179	57431	43285	8595		
63	70683	52554	5912	66842	51217	6427	59446	48542	6962	56026	47650	7684	54759	46759	8075	54400	46313	8488			
69	73630	33903	5962	69437	32691	6479	67889	32287	7200	63772	31479	7938	62326	30865	8337	61900	30461	8758			
67	72698	40414	5940	68564	39104	6456	64838	38231	7112	61122	37135	7844	59740	36699	8240	59341	36048	8658			
65	71224	44834	5911	67267	43511	6425	61752	41737	7019	58212	40743	7745	56897	40190	8138	56525	39531	8552			
63	69751	49254	5882	65969	47917	6394	58668	45242	6927	55301	44350	7645	54055	43682	8035	53709	43013	8446			
69	72019	29438	5928	68104	28272	6442	66370	27883	7159	62564	27105	7895	61147	26716	8203	60733	26328	8712			
67	71115	36112	5906	67255	34830	6419	63604	33975	7073	59960	33120	7802	58606	32693	8197	58220	31838	8613			
65	69967	41033	5879	66176	39724	6390	60745	37959	6982	57268	37086	7704	55978	36649	8096	55619	35776	8509			
63	68819	45955	5852	65097	44617	6361	57886	41942	6892	54576	41051	7607	53351	40605	7995	53018	39713	8404			
69	78512	54870	6077	73855	53880	6601	70309	52496	7269	65818	51507	8012	64319	51012	8414	63872	50023	8837			
67	78135	45437	6067	73491	44477	6591	72043	43997	7322	67444	42790	8068	65906	42310	8472	65441	41830	8897			
65	77099	51061	6043	72522	50071	6565	69042	48834	7230	64633	47845	7970	63164	47103	8371	62729	46361	8793			
63	75364	55410	6012	70978	54173	6532	65413	52441	7134	61429	51204	7868	60003	50586	8266	59623	49968	8685			
69	73629	59759	5981	69434	58275	6500	61784	56048	7039	58224	54564	7767	56901	54069	8161	56518	53575	8577			
67	76637	40253	6031	72078	39322	6552	70674	38857	7280	66162	37927	8023	64656	37461	8426	64204	36996	8849			
65	75685	47151	6008	71188	46162	6528	67775	45172	7191	63448	44183	7928	62010	43193	8327	61585	42699	8748			
63	73899	51500	5979	69690	50264	6497	64217	48779	7087	60308	47543	7828	58940	46800	8224	58542	46306	8642			
69	72113	55850	5949	68192	54365	6465	69699	52386	7003	67167	50902	7728	65870	50407	8121	65498	49913	8535			
67	74986	35598	5995	70711	34702	6514	69351	34253	7239	64924	33356	7979	63448	32908	8380	63010	32244	8802			
65	74067	42665	5974	69851	41696	6492	66282	40727	7151	62262	39521	7886	60852	38789	8283	60440	38305	8703			
63	72435	47303	5945	68401	46200	6461	62910	44602	7059	59187	43381	7787	57847	42767	8182	57461	42154	8598			
69	70803	51940	5916	66951	50703	6431	69538	48477	6966	66113	47240	7688	64841	46745	8080	64482	46003	8493			
67	73335	30844	5960	69344	30081	6477	68027	29649	7198	63686	28786	7935	62241	28355	8335	61817	27492	8756			
65	72449	38179	5939	68514	37231	6455	64790	36282	7111	61076	34859	7843	59894	34385	8240	59295	33911	8657			
63	70972	43105	5911	67112	42136	6425	61603	40425	7020	58067	39219	7746	56754	38734	8139	56380	38002	8554			
69	69494	48031	5883	65709	47041	6396	58417	44568	6930	55058	43578	7649	53813	43084	8039	53465	42094	8451			

# UNIT SPECIFICATIONS

## COOLING PERFORMANCE DATA FOR 7.5TR

Model	Evaporator / CFM	Dry Bulb Temp. F	Wet Bulb Temp. F	85F			95F			105F			115F			120F			125F				
				Capacity Btu/h	Sensible capacity Btu/h	Power Input Watt	Capacity Btu/h	Sensible capacity Btu/h	Power Input Watt	Capacity Btu/h	Sensible capacity Btu/h	Power Input Watt	Capacity Btu/h	Sensible capacity Btu/h	Power Input Watt	Capacity Btu/h	Sensible capacity Btu/h	Power Input Watt	Capacity Btu/h	Sensible capacity Btu/h	Power Input Watt		
3RTH090	2025	84.2	66.2	95996	60422	8434	91063	58416	9063	86861	57212	9870	82326	55607	10765	79982	54805	11245	77591	54002	11747		
			69	96932	50794	8456	91950	49036	9096	90080	48458	9964	85367	47090	10868	82931	46311	11354	80449	45533	11861		
			67	94762	56709	8405	89913	54703	9032	85769	53499	9837	81295	51895	10729	78982	51092	11207	76622	50290	11706		
			65	92225	59720	8351	87487	58067	8976	81270	56766	9708	77041	55161	10587	74852	54359	11058	72618	53556	11549		
		82	63	89668	62731	8297	85060	61430	8919	76771	60033	9580	72786	58428	10445	70722	57626	10909	68614	56823	11392		
			69	95928	45636	8432	90998	44127	9061	89160	43372	9937	84498	42240	10838	82089	41486	11322	79633	40731	11827		
			67	93568	52997	8376	88763	50991	9002	84677	49787	9804	80265	48182	10892	77982	47380	11169	75654	46577	11666		
			65	91056	56048	8323	86379	54406	8946	80237	53054	9676	76066	51449	10552	73906	50646	11021	71702	49844	11510		
		80	63	88543	59098	8269	83995	57822	8890	75797	56320	9549	71967	54715	10411	69830	53913	10872	67750	53111	11353		
			69	94656	40742	8402	89793	39287	9029	87995	38735	9902	83398	37469	10800	81022	36742	11282	78600	36015	11785		
			67	92584	48341	8353	87830	46569	8977	83792	45198	9777	79429	43818	10662	77171	43033	11137	74869	42247	11633		
			65	90136	51943	8300	85507	50428	8922	78425	49003	9650	75298	47511	10523	73162	46717	10990	70981	45923	11478		
		78	63	87688	55546	8248	83184	54287	8867	75057	52808	9524	71168	51204	10383	69152	50401	10843	67094	49599	11323		
			69	93384	35848	8371	88588	34448	8997	86830	34098	9867	82298	32698	10761	79955	31999	11241	77568	31299	11743		
			67	91600	43686	8329	86897	42147	8952	82907	40609	9749	78593	39455	10632	76361	38686	11106	74084	37916	11600		
			65	89217	47839	8277	84636	46449	8898	78612	44953	9624	74531	43573	10494	72417	42787	10960	70260	42002	11446		
		76	63	86833	51993	8226	82374	50752	8844	74317	49297	9499	70469	47692	10356	68474	46889	10815	66437	46087	11292		
			69	93384	35848	8371	88588	34448	8997	86830	34098	9867	82298	32698	10761	79955	31999	11241	77568	31299	11743		
			67	91600	43686	8329	86897	42147	8952	82907	40609	9749	78593	39455	10632	76361	38686	11106	74084	37916	11600		
			65	89217	47839	8277	84636	46449	8898	78612	44953	9624	74531	43573	10494	72417	42787	10960	70260	42002	11446		
		3RTH090	2857	84.2	66.2	104164	70633	8628	98799	68405	9267	94198	67290	10091	89250	65619	11008	86696	65062	11500	84094	63947	12014
					69	104352	58649	8632	98977	57028	9272	96867	56487	10167	91770	54865	11090	89141	54325	11586	86463	53244	12105
					67	102732	65859	8595	97442	63909	9232	92911	62516	10053	88035	61124	10966	85518	60288	11456	82953	59452	11968
					65	100597	71128	8553	95416	69318	9189	88646	66950	9938	84003	65418	10840	81603	64582	11324	79157	63746	11829
82	63			98462	76398	8511	93389	74726	9146	84381	71383	9823	79970	69712	10713	77688	68876	11191	75362	68040	11689		
	69			102881	52492	8598	97583	50920	9236	95521	50396	10128	90500	48824	11048	87909	48300	11542	85269	47252	12058		
	67			101300	61085	8561	96086	59414	9197	91624	57743	10015	86821	56628	10924	84340	55514	11413	81812	54957	11923		
	65			99214	66355	8520	94106	64683	9155	87425	62176	9901	82850	60783	10799	80486	59947	11281	78075	59112	11784		
80	63			97128	71624	8479	92125	69952	9112	83326	66609	9787	78880	64938	10674	76631	64381	11149	74338	63266	11646		
	69			101518	46423	8566	96292	44908	9202	94274	44403	10091	89323	43132	11007	86768	42384	11500	84164	41617	12014		
	67			99995	55245	8530	94850	53608	9165	90452	52238	9980	85715	50880	10886	83267	50056	11372	80773	49510	11880		
	65			97892	61187	8488	92853	59393	9121	86259	57176	9865	81750	55661	10760	79419	54971	11240	77041	54141	11740		
78	63			95789	67128	8447	90857	65178	9078	82067	62114	9750	77785	60443	10633	75570	59885	11107	73310	58771	11601		
	69			100155	40355	8534	95001	38897	9168	93027	38411	10054	88146	37439	10967	85626	36467	11457	83058	35981	11970		
	67			98691	49405	8499	93614	47802	9132	89280	46734	9945	84609	45132	10847	82195	44598	11332	79734	44064	11838		
	65			96570	56019	8457	91601	54103	9088	85093	52176	9829	80650	50540	10720	78352	49994	11198	76006	49170	11697		
76	63			94449	62633	8414	89588	60404	9043	80907	57619	9713	76691	55947	10593	74509	55390	11064	72282	54276	11556		
	69			100155	40355	8534	95001	38897	9168	93027	38411	10054	88146	37439	10967	85626	36467	11457	83058	35981	11970		
	67			98691	49405	8499	93614	47802	9132	89280	46734	9945	84609	45132	10847	82195	44598	11332	79734	44064	11838		
	65			96570	56019	8457	91601	54103	9088	85093	52176	9829	80650	50540	10720	78352	49994	11198	76006	49170	11697		
3RTH090	3121			84.2	66.2	105857	74685	8669	100403	73448	9310	95718	71593	10137	90684	70356	11058	88087	69119	11552	85440	68501	12069
					69	105953	62094	8671	100493	60604	9312	98329	60004	10211	93150	58495	11138	90478	57895	11636	86582	65386	12113
					67	104533	69695	8638	99148	68149	9277	94528	66603	10102	89561	65367	11019	86997	64130	11512	84385	63512	12027
					65	102363	75698	8596	97088	73843	9234	90203	71524	9986	85472	69978	10893	83027	69051	11379	80536	68279	11887
		82	63	100193	81701	8553	95028	79536	9190	85878	76445	9870	81382	74589	10766	79058	73971	11246	76687	73045	11747		
			69	104456	55352	8636	99075	53608	9275	96960	53028	10171	91857	51863	11095	89225	51281	11591	86544	50118	12110		
			67	103208	64706	8607	97893	62851	9245	93338	61614	10067	88438	60377	10981	85908	59141	11472	83330	58522	11985		
			65	101023	70554	8564	95818	68699	9201	89021	66535	9951	84356	64989	10854	81946	64061	11338	79489	63443	11844		
		80	63	98838	76402	8521	93744	74547	9156	84705	71455	9834	80275	69600	10726	77984	68982	11204	75647	68363	11703		
			69	103038	48722	8603	97732	47311	9240	95663	46750	10133	90634	45629	11053	88038	45069	11548	85394	43948	12064		
			67	101717	58584	8572	96480	56767	9208	91998	55556	10027	87173	54049	10937	84682	53134	11426	82143	52528	11937		
			65	99669	64999	8532	94536	63163	9166	87825	61011	9914	83227	59330	10813	80851	58563	11296	78428	57951	11800		
		78	63	97621	71413	8491	92592	69558	9125	83652	66466	9801	79281	64611	10689	77020	63993	11166	74714	63374	11663		
			69	101621	42092	8569	96389	41014	9206	94367	40474	10095	89410	39396	11012	86852	38856	11504	84245	37778	12018		
			67	100226	52462	8537	95068	50684	9171	90659	49498	9987	85909	47720	10894	83455	47127	11380	80955	46535	11889		
			65	98316	59443	8499	93254	57626	9132	86629	55488	9877	82098	53671	10773	79756	53065	11254	77368	52460	11755		
		76	63	96405	66424	8462	91440	64569	9094	82599	61477	9767	78288	59622	10653	76057	59003	11127	73782	58385	11622		



# UNIT SPECIFICATIONS

## COOLING PERFORMANCE DATA FOR 10TR

Model	Evaporator CFM	Dry Bulb Temp. F	Wet Bulb Temp. F	85F			95F			105F			115F			120F			125F		
				Capacity Btu/h	Sensible capacity Btu/h	Power Input Watt	Capacity Btu/h	Sensible capacity Btu/h	Power Input Watt	Capacity Btu/h	Sensible capacity Btu/h	Power Input Watt	Capacity Btu/h	Sensible capacity Btu/h	Power Input Watt	Capacity Btu/h	Sensible capacity Btu/h	Power Input Watt	Capacity Btu/h	Sensible capacity Btu/h	Power Input Watt
				3RTH120																	
2700	84.2	66.2	121905	77887	10377	113593	75213	11226	107665	73608	12318	100814	71468	13513	88975	70933	14149	98869	68863	14812	
		69	123478	65381	10410	116028	63305	11286	113857	62535	12478	107919	60710	13691	104202	59940	14337	104113	59153	15010	
		67	120335	72338	10342	112570	70530	11200	106688	68925	12289	99889	66785	13480	98063	66250	14115	97955	65181	14776	
		65	117809	77631	10293	110257	75549	11153	101463	73682	12146	85050	71542	13320	83285	70740	13945	93156	68804	14595	
	82	63	115284	82324	10244	107945	80568	11105	96239	78439	12003	80212	76299	13159	88507	75229	13775	88357	74427	14415	
		69	122309	58836	10384	114916	56823	11258	112775	55817	12446	106881	54308	13656	103197	53302	14301	103103	52799	14972	
		67	118765	67888	10307	111546	65848	11174	105710	64243	12260	98964	62103	13448	97151	61568	14081	97041	60498	14739	
		65	115280	72496	10236	107936	70578	11096	99306	68598	12084	93126	66459	13250	91384	65656	13872	91248	64854	14518	
	80	63	111795	77005	10165	104326	75308	11019	92901	72954	11908	87288	70814	13053	85617	69744	13662	85454	68209	14296	
		69	121077	52617	10357	113744	50677	11228	111630	49708	12413	104902	48253	13618	102133	47283	14261	102037	46799	14930	
		67	117630	62092	10281	110467	59996	11146	104683	58168	12229	97989	56329	13413	95191	55549	14044	95078	54757	14700	
		65	114362	67269	10211	107987	65378	11070	98512	63320	12055	92375	61230	13218	90645	60439	13837	90508	59642	14481	
	76	63	111134	72447	10142	103707	70790	10994	92342	68271	11880	86761	66132	13022	85099	65329	13629	84939	64527	14261	
		69	119844	46397	10329	112572	44631	11198	110485	43598	12379	102923	42198	13581	101069	41265	14221	100971	40796	14888	
		67	116495	56196	10255	109388	54145	11118	103656	52094	12198	97013	50555	13378	95232	49530	14007	95114	49017	14661	
		65	113484	62042	10187	106238	60178	11043	97719	57841	12025	91623	56002	13185	89906	55222	13802	89769	54430	14444	
	3810	84.2	66.2	132550	93241	10604	124728	91012	11497	118434	88783	12619	112282	87297	13848	108434	86564	14504	108354	85068	15186
			69	133242	78834	10618	125375	75043	11511	122733	74323	12730	116144	72509	13971	112187	71788	14633	112112	71068	15323
			67	130800	86637	10566	123061	84408	11456	116834	82551	12574	110750	81065	13797	108950	79950	14450	108863	78836	15129
			65	127645	93902	10507	119796	91487	11392	110489	88701	12410	104101	86752	13615	101298	85554	14257	101189	84779	14926
		82	63	124490	101166	10448	116532	98565	11328	104145	94850	12247	97452	92439	13433	95646	91158	14065	95515	90722	14722
			69	131439	68435	10579	123662	66339	11469	120789	65640	12683	114544	64243	13919	110634	63544	14579	110556	62845	15265
			67	129049	80034	10529	121393	77895	11415	115233	76319	12528	109219	74833	13747	105465	73347	14396	105372	72604	15073
			65	126143	87298	10474	118367	85069	11356	109141	82468	12371	102817	80611	13571	100044	79496	14211	99930	78753	14876
80		63	123237	94562	10420	115341	92333	11297	103048	88618	12214	96415	86389	13396	94623	85646	14025	94488	84903	14680	
		69	128870	60516	10545	121899	58496	11432	119337	57822	12641	113155	56475	13873	109285	55802	14530	109205	55129	15214	
		67	127562	72403	10496	119712	70220	11379	113880	68765	12488	107026	67310	13703	104205	66210	14350	104112	65127	15024	
		65	124461	80366	10439	116748	78180	11318	107747	75390	12329	101041	73733	13524	98743	72812	14161	98628	71899	14824	
76		63	121361	88330	10383	113783	86101	11257	101615	82014	12169	95055	80157	13346	93282	79414	13972	93143	78671	14624	
		69	128302	52597	10511	120137	50652	11395	117885	50004	12600	111766	48708	13827	107937	48060	14481	107854	47412	15162	
		67	126074	64772	10463	118030	62636	11344	112526	61211	12449	104834	59787	13659	102945	59074	14303	102852	57650	14974	
		65	122780	73435	10404	115128	71252	11280	106354	68311	12287	99264	66856	13477	97442	66128	14111	97325	65044	14771	
4162		84.2	66.2	134655	99362	10652	126730	96898	11548	120340	96239	12676	114106	93690	13911	110205	92765	14270	110121	91940	15266
			69	135231	82076	10663	127272	79676	11560	124858	78875	12784	116173	76863	13976	112213	76063	14639	112135	75263	15329
			67	132877	92445	10613	125037	89971	11507	118720	88322	12630	112555	86673	13960	108699	85848	14516	108612	85023	15199
			65	129786	100095	10556	121826	97621	11445	112392	94521	12469	105910	91569	13981	103066	90489	14326	102958	89839	14998
		82	63	126695	107745	10499	118816	105271	11383	106063	100720	12308	99264	96465	13501	97433	95130	14136	97304	94654	14797
			69	133403	72852	10624	125341	70525	11518	123157	69750	12737	116285	68199	13979	112324	67423	14642	112249	66648	15332
			67	131100	85528	10575	123344	83054	11465	117100	81405	12584	111005	79756	13809	107194	78931	14462	107104	78106	15142
			65	128240	93178	10523	120358	90704	11408	111009	87818	12429	104592	86169	13636	101779	85344	14279	101668	84519	14948
	80	63	125381	100828	10470	117371	98354	11352	104917	94231	12273	98179	92582	13462	96364	91757	14095	96233	90933	14754	
		69	131760	64175	10588	123967	61933	11479	121362	61196	12694	114830	59691	13911	110912	58943	14591	110834	58196	15278	
		67	129540	77127	10541	121590	74705	11428	115681	73090	12543	109647	71474	13763	105876	70667	14414	105783	69859	15091	
		65	126509	85519	10487	118981	83071	11369	109671	80202	12386	103224	78570	13588	100440	77753	14228	100326	76937	14895	
	76	63	123478	93911	10432	115792	91437	11311	103460	87314	12228	98800	85665	13412	95004	84840	14042	94869	84016	14698	
		69	130118	55498	10552	122403	53341	11440	119967	52621	12650	113375	51183	13883	109499	50464	14540	109418	49744	15225	
		67	127981	68727	10507	119837	66355	11391	114261	64774	12502	108290	63193	13717	104557	62403	14366	104462	61612	15040	
		65	124778	77860	10451	117024	75438	11330	108133	72586	12343	101855	70970	13539	99100	70163	14177	98984	69355	14841	
	63	121576	86984	10394	114212	84520	11270	102004	80397	12183	95421	78748	13361	93643	77523	13889	93606	77098	14641		

# UNIT SPECIFICATIONS

## COOLING PERFORMANCE DATA FOR 12.5TR

Model	Evaporator CFM	Dry Bulb Temp. F	Wet Bulb Temp. F	85F			95F			105F			115F			120F			125F			
				Capacity Btu/h	Sensible capacity Btu/h	Power Input Watt	Capacity Btu/h	Sensible capacity Btu/h	Power Input Watt	Capacity Btu/h	Sensible capacity Btu/h	Power Input Watt	Capacity Btu/h	Sensible capacity Btu/h	Power Input Watt	Capacity Btu/h	Sensible capacity Btu/h	Power Input Watt	Capacity Btu/h	Sensible capacity Btu/h	Power Input Watt	
				3RTH50																		
3375	82	84.2	66.2	144183	95353	12242	136751	92678	13222	129954	90672	14473	121072	87273	15730	117040	87082	16678	112704	83027	17420	
		69	145794	79780	12279	138263	77520	13261	135740	78536	14634	125945	73976	15901	121758	73086	16857	117223	69513	17504		
		67	142673	89500	12205	134924	86825	13172	128233	84485	14419	119470	81468	15672	115498	80912	16618	111224	77053	17358		
		65	138851	95306	12117	131494	93477	13083	121198	90264	14211	112241	87200	15451	109408	86508	16386	105375	82471	17119		
	80	63	135029	101112	12029	128064	100129	12994	114164	96043	14004	105012	92931	15230	103319	92104	16154	99527	87889	16880		
		69	144209	71658	12241	136770	69143	13220	134295	68514	14590	124610	66079	15854	120470	65185	16808	115998	61901	17553		
		67	141163	83647	12169	133097	80972	13122	126511	78297	14365	117868	75663	15615	113955	74742	16558	109744	71079	17296		
		65	137432	89453	12083	129945	88088	13041	119772	84076	14166	110919	81395	15403	108127	80505	16336	104147	76658	17067		
	78	63	133700	95260	11997	126794	95205	12960	113033	89855	13967	103971	87126	15191	102299	86267	16113	98549	82238	16838		
		69	142187	63661	12191	134852	61528	13168	132189	60631	14532	122902	58329	15792	118821	57438	16744	114413	54726	17487		
		67	139198	75985	12121	131637	73365	13082	125128	71066	14321	116585	68533	15568	112717	67600	16509	108558	64190	17245		
		65	135537	82632	12036	128231	81191	12997	116298	77534	14119	109562	74761	15352	106805	73849	16282	102878	70388	17012		
	76	63	131877	89280	11952	124826	89017	12911	111468	84002	13916	102538	80989	15136	100892	80097	16056	97198	76586	16778		
		69	140165	56664	12142	132934	53914	13115	130083	52748	14474	121194	50578	15731	117171	49691	16679	112828	47551	17421		
		67	137234	68322	12073	130177	65758	13041	123746	63835	14278	115303	61402	15622	111479	60459	16460	107372	57302	17195		
		65	133643	75811	11990	126517	74294	12952	116825	70992	14072	108204	68128	15301	105482	67193	16229	101609	64118	16957		
	4762	82	84.2	66.2	155371	111230	12512	147290	109373	13510	140454	106587	14784	<b>130280</b>	<b>103867</b>	<b>16061</b>	125938	102581	17024	121224	98429	17776
			69	155996	92350	12526	147877	90548	13524	145024	89647	14922	135717	86229	16207	130026	85800	17177	123338	81310	17860	
			67	153555	103737	12464	145386	101880	13458	138651	99094	14728	128615	96436	16002	124331	95110	16963	119684	91194	17713	
			65	150293	112752	12396	142498	110430	13386	131768	106483	14534	122599	103642	15795	118616	101674	16747	114102	97619	17491	
		80	63	147232	121766	12328	139610	119881	13314	124885	113873	14340	116564	110847	15689	112702	108238	16531	108519	104044	17269	
			69	153882	82253	12475	145881	80506	13470	143099	79633	14864	133925	76379	16145	128311	75924	17112	122539	72671	17856	
			67	151338	96244	12415	<b>143481</b>	<b>94387</b>	<b>13407</b>	136848	91601	14673	128950	89005	15943	122724	87638	16901	118144	83960	17649	
			65	148378	105027	12350	140688	102705	13337	129943	98991	14482	121043	96334	15740	117014	95007	16689	112662	91095	17431	
78		63	145417	113809	12284	137896	111023	13267	123039	106380	14291	115136	103663	15537	111305	102376	16476	107180	98230	17212		
		69	151482	72733	12417	143618	70644	13409	140916	69803	14796	131313	67126	16073	126360	66652	17037	121639	63333	17789		
		67	149010	87070	12359	141286	84806	13347	134502	82523	14608	125024	80040	15874	120865	78662	16829	116363	75288	17575		
		65	146126	96693	12295	138564	94168	13279	127840	90705	14420	119216	87906	15673	115249	86783	16619	110970	83141	17359		
76		63	143243	106317	12231	135841	103531	13210	121179	98888	14231	113407	95771	15473	109632	94904	16470	105578	90995	17143		
		69	149081	63213	12359	141356	60783	13347	138733	59973	14728	128701	57873	16002	124410	57380	16962	119774	53995	17712		
		67	146681	77896	12303	139092	75225	13287	132156	73445	14543	123099	71975	15805	119006	69686	16757	114581	66616	17501		
		65	143875	88360	12240	136439	85632	13220	125738	82420	14357	117388	79477	15607	113483	78560	16550	109278	75188	17288		
5202		82	84.2	66.2	157685	119329	12959	149485	116237	13570	142519	114175	14848	133364	111191	16129	127769	110770	17096	122849	105263	17844
			69	157922	88497	12573	149699	86013	13574	146777	85487	14977	136349	81225	16296	130676	80725	17267	124811	86880	17922	
			67	155578	111013	12518	147495	107921	13516	140636	105859	14791	131036	102944	16068	126091	102477	17032	121306	97732	17781	
			65	152606	120503	12452	144558	117668	13443	133811	113628	14594	124653	109212	15860	120210	107616	16814	115692	103045	17559	
		80	63	149634	129993	12387	141622	127416	13370	126987	121398	14398	118269	115480	15652	114329	112755	16597	110078	108359	17337	
			69	155539	87413	12515	147455	84505	13513	144607	84505	14911	135327	80926	16195	129652	80400	17165	124788	76913	17920	
			67	153471	102697	12468	145505	99605	13482	138753	97543	14733	128709	94696	16007	124413	94185	16998	119763	90200	17718	
			65	150604	111929	12404	142539	109352	13388	131939	105745	14536	122626	102830	15798	118537	101849	16750	114121	97621	17494	
	78	63	147736	121161	12340	139872	119100	13314	125125	113946	14340	116542	110964	15689	112962	109513	16532	108480	105042	17269		
		69	153273	76538	12461	145309	74185	13455	142537	74185	14847	133400	70796	16128	127808	70250	17094	123021	67118	17848		
		67	151101	92106	12410	143260	89572	13401	136627	87553	14667	126745	84830	15936	122518	84286	16894	117946	80636	17642		
		65	148311	102475	12348	140497	99920	13332	129899	96992	14477	120868	93774	15734	116841	92754	16683	112496	88825	17425		
	76	63	145520	112845	12286	137735	110268	13263	123171	105630	14286	114991	102717	15532	111164	101221	16472	107045	97013	17208		
		69	151007	65664	12406	143162	63866	13397	140468	63866	14783	131473	60665	16060	125963	60100	17023	121254	57324	17775		
		67	148731	81515	12353	141016	79539	13340	134501	77563	14601	124781	74965	15866	120622	74388	16821	116130	71073	17567		
		65	146018	93022	12292	138456	90488	13276	127859	87438	14417	119110	84717	15671	115144	83658	16616	110870	80028	17356		
	63	143304	104529	12232	135897	101437	13212	121217	97314	14233	113439	94469	15475	109667	92928	16412	105611	88984	17146			

# UNIT SPECIFICATIONS

## COOLING PERFORMANCE DATA FOR 15TR

Model	Evaporator CFM	Dry Bulb Temp. F	Wet Bulb Temp. F	85F			95F			105F			115F			120F			125F				
				Capacity Btuh	Sensible capacity	Power Input Watt	Capacity Btuh	Sensible capacity	Power Input Watt	Capacity Btuh	Sensible capacity	Power Input Watt	Capacity Btuh	Sensible capacity	Power Input Watt	Capacity Btuh	Sensible capacity	Power Input Watt	Capacity Btuh	Sensible capacity	Power Input Watt		
3RTH180	4050	84.2	66.2	176661	112737	15614	167531	109527	16836	159737	107120	18401	144993	99568	19289	141307	98370	20246	137430	97881	21235		
		82	69	177663	94282	15637	168480	91545	16860	165103	90389	18562	149847	84375	19459	146031	83170	20425	142019	81909	21424		
			67	174258	105605	15555	165255	102395	16773	157577	99988	18333	143040	93119	19217	139407	91898	20169	135585	91004	21154		
			65	169929	112215	15457	161149	109984	16669	149541	106228	18090	135763	99291	18958	132321	98092	19895	128700	97021	20863		
			63	165599	118825	15359	157043	117574	16566	141505	112469	17846	128486	105463	18699	125236	104285	19621	121814	103039	20573		
		80	69	175195	84475	15577	166142	82211	16797	162843	80702	18492	147804	75160	19385	144043	73970	20347	140089	72728	21342		
			67	171856	98473	15497	162979	95263	16711	155418	92856	18265	141087	86689	19145	137507	85426	20093	133740	84126	21073		
			65	167614	105177	15400	158955	103510	16609	147498	99096	18023	133915	92649	18888	130523	91427	19821	126953	90144	20784		
			63	163372	111882	15304	154932	111756	16506	139578	105337	17782	126743	98629	18631	123540	97427	19548	120167	96162	20495		
		78	69	173101	75189	15526	164157	73007	16742	160925	71902	18431	146070	66472	19321	142356	65640	20279	138451	64428	21270		
			67	169859	89598	15447	161086	86455	16658	153622	84097	18207	139464	78324	19083	135927	77085	20028	132207	76163	21004		
			65	165739	97336	15353	157178	95539	16558	145842	91352	17968	132417	85252	18829	129066	84020	19758	125539	82917	20718		
			63	161618	105074	15258	153270	104624	16457	138061	98606	17729	125371	92179	18574	122205	90955	19488	118871	89671	20432		
		76	69	171007	65903	15474	162173	63803	16687	159006	63103	18370	144336	57784	19256	140669	57311	20211	136814	56127	21198		
			67	167862	80723	15398	159194	77646	16605	151827	75339	18149	137841	69980	19021	134348	68743	19963	130673	68200	20935		
			65	163863	89494	15305	155401	87569	16507	144186	83607	17913	130920	77854	18770	127609	76613	19696	124124	75690	20652		
			63	159864	98265	15213	151608	97492	16409	136545	91875	17676	123999	85729	18518	120870	84483	19428	117574	83180	20368		
		3RTH180	5715	84.2	66.2	189309	134605	15921	179508	131261	17162	171092	129032	18758	155254	120437	19637	151288	119783	20643	147120	119055	21655
				82	69	189783	111913	15931	179956	108669	17173	176187	107588	18905	159862	101020	19821	155772	99291	20808	151476	98535	21828
					67	186876	125612	15863	177203	122269	17100	168907	120040	18690	153279	111820	19594	149367	111136	20568	145255	110383	21576
					65	183206	136152	15784	173723	132809	17017	161230	128630	18467	146331	120318	19358	142603	119396	20319	138683	118121	21312
					63	179536	146693	15704	170243	143349	16933	153554	137219	18244	139383	128816	19122	135839	127655	20069	132110	125859	21047
				80	69	187245	99762	15871	177552	96617	17109	173865	95569	18835	157764	89567	19747	153731	87862	20730	149494	87106	21746
					67	184442	116620	15804	174898	113277	17038	166721	111048	18623	151304	103204	19523	147445	102490	20493	143390	101712	21496
65	180726				127160	15723	171373	123817	16953	159045	119359	18398	144356	111702	19285	140681	110481	20241	136817	109726	21230		
63	177009				137700	15643	167849	134357	16868	151369	127670	18173	137407	120199	19047	133916	118473	19990	130244	117741	20963		
78	69			184423	87813	15803	174879	85268	17037	171284	84258	18756	155431	78336	19664	151462	77133	20641	147291	76382	21653		
	67			181700	105053	15738	172300	101778	16968	164258	99595	18546	149078	92808	19442	145280	92081	20407	141287	90779	21405		
	65			178236	116602	15662	169015	113293	16888	156846	109137	18327	142369	102196	19210	138748	100954	20162	134940	99924	21146		
	63			174772	128151	15587	165730	124807	16808	149434	118678	18108	135659	111583	18979	132216	109827	19917	128593	109070	20886		
76	69			181601	75863	15735	172206	73919	16965	168702	72947	18677	153098	67105	19580	149192	66403	20553	145088	65658	21560		
	67			178958	93485	15672	169703	90280	16897	161795	88143	18469	146852	82413	19360	143115	81671	20321	139185	79847	21314		
	65			175746	106043	15601	166657	102769	16823	154648	98914	18256	140381	92690	19135	136815	91426	20083	133063	90123	21062		
	63			172534	118601	15531	163611	115258	16748	147500	109685	18044	133910	102966	18910	130515	101180	19844	126941	100398	20809		
3RTH180	6243			84.2	66.2	193529	141471	16023	183502	137760	17269	174878	135286	18874	158675	127263	19789	154614	126515	20773	150350	124495	21792
				82	69	193292	116609	16016	183277	113591	17263	179393	112390	19004	162758	105394	19925	158588	104606	20917	154209	103751	21944
					67	190636	131222	15954	180762	128130	17197	172280	125656	18795	156327	118035	19705	152331	116660	20685	148132	115208	21699
					65	187315	142570	15884	177613	139169	17123	164844	135149	18582	149596	126718	19480	145779	124918	20447	141766	123012	21448
					63	183995	153919	15814	174464	150208	17049	157408	144641	18369	142866	135401	19255	139226	133176	20209	135399	130817	21196
				80	69	190323	103096	15946	180466	100769	17189	176678	99606	18923	160304	93215	19840	156201	92419	20827	151892	91565	21849
					67	187742	120973	15885	178022	118500	17124	169683	116026	18716	153979	108807	19622	150047	106806	20597	145915	105922	21606
		65	184512		132322	15817	174958	129229	17052	162371	125518	18505	147362	117311	19399	143605	115933	20361	139655	115076	21357		
		63	181281		143670	15748	171893	139959	16979	155060	135011	18294	140744	125814	19175	137163	125061	20125	133395	124230	21107		
		78	69	187338	90955	15875	177639	88713	17113	173948	87592	18839	157838	81784	19752	153802	80989	20734	149563	80142	21751		
			67	184837	109238	15815	175270	106816	17050	167073	104393	18635	151621	97141	19536	147753	95719	20507	143688	94828	21511		
			65	181702	121639	15748	172297	118572	16979	159894	114578	18426	145123	106864	19315	141427	105760	20273	137541	104885	21263		
			63	178567	134040	15681	169324	130329	16908	152715	124763	18217	138624	116586	19094	135100	115801	20039	131393	114943	21015		
		76	69	184354	78814	15803	174812	76657	17037	171219	75578	18756	155371	70352	19664	151403	69559	20642	147234	68720	21653		
			67	181931	97503	15745	172518	95132	16975	164464	92760	18554	149264	85476	19451	145460	84632	20417	141461	83733	21415		
			65	178893	110956	15679	169636	107915	16906	157416	103637	18347	142883	96417	19231	139248	95587	20185	135426	94695	21170		
			63	175854	124409	15614	166754	120699	16837	150369	114514	18140	136503	107358	19012	133037	106541	19953	129390	105657	20924		

# UNIT SPECIFICATIONS

## COOLING PERFORMANCE DATA FOR 18TR

Model	Evaporator CFM	Dry Bulb Temp. F	Wet Bulb Temp. F	85F			95F			105F			115F			120F			125F			
				Capacity Btuh	Sensible capacity	Power Input Watt	Capacity Btuh	Sensible capacity	Power Input Watt	Capacity Btuh	Sensible capacity	Power Input Watt	Capacity Btuh	Sensible capacity	Power Input Watt	Capacity Btuh	Sensible capacity	Power Input Watt	Capacity Btuh	Sensible capacity	Power Input Watt	
3RTH216	4860	84.2	66.2	222954	139136	19587	211875	135284	21129	202130	131433	23124	181975	122379	24108	177316	120244	25461	172335	118970	26830	
			69	224929	116876	19634	213751	113591	21180	209491	112204	23359	188627	103265	24359	183821	102008	25729	178686	100702	27116	
			67	220058	130578	19516	209121	126726	21052	199504	123356	23037	179603	114231	24015	174997	112515	25362	170071	111204	26724	
			65	215333	138243	19399	204630	134854	20924	190040	131326	22725	171047	121590	23680	166631	120142	25002	161902	118868	26340	
		63	210608	145909	19282	200139	142981	20797	180577	139296	22412	162492	128948	23345	158264	127769	24643	153732	126531	25956		
		82	69	222526	104992	19575	211466	102276	21116	207272	100464	23286	186624	92198	24281	181863	90939	25646	176775	89634	27027	
			67	217162	122019	19445	206367	118167	20975	196878	115279	22951	177230	106083	23923	172678	104786	25262	167808	103438	26618	
			65	212861	129877	19338	202278	126507	20858	187833	123249	22651	169052	113671	23601	164681	112413	24917	159998	111101	26249	
			63	208561	137734	19231	198190	134847	20741	178788	131219	22350	160875	121259	23278	156683	120039	24572	152188	118765	25881	
		80	69	219496	93717	19501	208585	91099	21035	204474	89354	23194	184097	82145	24183	179393	80897	25541	174364	79608	26915	
			67	214812	111290	19386	204132	107518	20911	194747	104689	22879	175306	96077	23846	170797	94766	25180	165971	93408	26531	
			65	210307	120328	19274	199848	117025	20788	185562	113674	22573	167000	104594	23518	162674	103308	24828	158038	101972	26154	
			63	205801	129366	19162	195565	126532	20665	176377	122660	22267	158694	113111	23189	154551	111849	24476	150106	110535	25778	
		78	69	216467	82443	19426	205704	79923	20954	201676	78243	23102	181570	72092	24085	176923	70856	25436	171953	69581	26803	
			67	212463	100560	19328	201897	96868	20847	192616	94099	22808	173381	86071	23769	168915	84747	25098	164135	83379	26443	
			65	207752	110779	19210	197418	107543	20718	183291	104100	22496	164947	95517	23434	160667	94203	24739	156079	92842	26059	
			63	203041	120998	19092	192939	118218	20590	173966	114102	22184	156514	104963	23099	152418	103659	24380	148023	102306	25675	
		76	69	216467	82443	19426	205704	79923	20954	201676	78243	23102	181570	72092	24085	176923	70856	25436	171953	69581	26803	
			67	212463	100560	19328	201897	96868	20847	192616	94099	22808	173381	86071	23769	168915	84747	25098	164135	83379	26443	
			65	207752	110779	19210	197418	107543	20718	183291	104100	22496	164947	95517	23434	160667	94203	24739	156079	92842	26059	
			63	203041	120998	19092	192939	118218	20590	173966	114102	22184	156514	104963	23099	152418	103659	24380	148023	102306	25675	
		6858	84.2	66.2	238366	165538	19960	226523	161525	21535	216088	157513	23578	<b>194581</b>	<b>147413</b>	<b>24593</b>	189638	145611	25979	184362	145025	27382
				69	239138	136891	19978	227256	133667	21555	222595	132369	23782	200458	122914	24810	195384	121702	26210	189972	120397	27629
				67	235465	154078	19890	223765	150735	21459	213461	146723	23493	192209	136503	24502	187320	135285	25882	182099	134650	27279
	65			231353	167395	19789	219858	163383	21349	204280	157699	23195	183914	146634	24184	179211	145469	25542	174183	144561	26916	
	63		227240	180712	19689	215951	176031	21240	195099	168675	22898	175619	156766	23866	171101	155653	25202	166266	154472	26553		
	82		69	236104	122230	19905	224371	118456	21475	219797	117199	23692	197933	109183	24714	192917	107338	26108	187563	106644	27520	
			67	232564	142619	19820	<b>221007</b>	<b>139944</b>	<b>21382</b>	210834	135932	23407	189836	125593	24411	185001	124959	25784	179837	124274	27175	
			65	228364	155936	19717	217017	152592	21270	201623	146574	23108	181515	135725	24090	176865	135143	25442	171893	133864	26809	
			63	224164	169253	19614	213026	165240	21158	192413	157216	22809	173193	145856	23770	168729	145327	25099	163950	143453	26444	
	80		69	232683	108382	19822	221119	104746	21385	216642	103534	23589	195084	96261	24605	190132	94436	25992	184846	93725	27396	
			67	229238	129324	19738	217845	126063	21294	207820	122775	23308	187115	113146	24305	182342	112475	25671	177241	111140	27055	
			65	225343	143558	19642	214145	139922	21189	198932	134600	23018	179083	124365	23995	174489	123738	25339	169574	122109	26700	
			63	221449	157793	19546	210445	153781	21085	190043	146425	22728	171051	135583	23684	166635	135001	25007	161907	133078	26345	
	78		69	229261	94535	19739	217866	91036	21294	213486	89869	23487	192235	83338	24496	187348	81535	25875	182129	80805	27272	
			67	225911	116028	19657	214683	112182	21206	204807	109618	23210	184394	100699	24200	179682	99990	25559	174645	98005	26934	
65			222323	131181	19568	211273	127252	21109	196240	122626	22929	176652	113005	23899	172112	112332	25236	167254	110354	26590		
63			218734	146334	19479	207863	142322	21011	187673	135635	22648	168910	125310	23598	164542	124675	24914	159863	122702	26246		
76	69		229261	94535	19739	217866	91036	21294	213486	89869	23487	192235	83338	24496	187348	81535	25875	182129	80805	27272		
	67		225911	116028	19657	214683	112182	21206	204807	109618	23210	184394	100699	24200	179682	99990	25559	174645	98005	26934		
	65		222323	131181	19568	211273	127252	21109	196240	122626	22929	176652	113005	23899	172112	112332	25236	167254	110354	26590		
	63		218734	146334	19479	207863	142322	21011	187673	135635	22648	168910	125310	23598	164542	124675	24914	159863	122702	26246		
7492	84.2		66.2	241947	176312	20044	229928	171859	21626	219334	168890	23680	197513	157964	24701	192505	155936	26094	187161	155258	27505	
			69	242041	145480	20049	230014	141857	21631	225269	140417	23868	202872	130941	24902	197743	130236	26308	192273	128092	27733	
			67	238845	164336	19971	226978	159882	21546	216523	156914	23590	194974	146562	24606	190023	144475	25993	184738	143742	27397	
		65	234885	178374	19874	223216	173921	21442	207419	168725	23297	186750	157454	24293	181982	155232	25658	176888	153456	27041		
	63	230924	192413	19778	219453	187959	21337	198316	180537	23005	178525	168346	23980	173942	165990	25324	169039	163170	26684			
	82	69	238635	128686	19967	226776	125894	21542	222130	124498	23768	200038	115869	24795	194973	115129	26194	189570	112998	27612		
		67	235743	152359	19897	224028	147906	21466	213711	144937	23501	192435	135159	24511	187541	133013	25891	182315	132226	27289		
		65	231766	166397	19799	220250	161944	21360	204645	156749	23207	184244	145698	24197	179533	144317	25556	174497	143583	26931		
		63	227789	180436	19702	216472	175983	21254	195578	168561	22914	176052	156237	23883	171525	155620	25220	166679	154941	26573		
	80	69	235371	113570	19887	223673	110879	21456	219120	109534	23670	197321	101719	24691	192318	100955	26083	186979	98853	27494		
		67	232346	137013	19814	220799	133364	21376														

# UNIT SPECIFICATIONS

## COOLING PERFORMANCE DATA FOR 20TR

Model	Evaporator CFM	Dry Bulb Temp. F	Wet Bulb Temp. F	85F			95F			105F			115F			120F			125F			
				Capacity Btu/h	Sensible capacity Btu/h	Power Input Watt	Capacity Btu/h	Sensible capacity Btu/h	Power Input Watt	Capacity Btu/h	Sensible capacity Btu/h	Power Input Watt	Capacity Btu/h	Sensible capacity Btu/h	Power Input Watt	Capacity Btu/h	Sensible capacity Btu/h	Power Input Watt	Capacity Btu/h	Sensible capacity Btu/h	Power Input Watt	
				3RTH240																		
5400	84.2	82	66.2	247859	154596	21606	235742	150316	23357	224691	148036	25604	201695	135021	26808	195922	133605	28263	189790	132189	29812	
			69	249903	129862	21654	237679	126213	23409	232784	124671	25858	208988	114793	27080	203038	112831	28553	196726	111377	30120	
			67	245122	145086	21540	232566	140807	23269	221671	137062	25505	198972	126473	26703	193265	124505	28151	187201	123046	29692	
			65	239535	153959	21405	227552	149860	23129	211026	145918	25157	189354	134908	26329	183869	132979	27753	178031	131304	29268	
		63	233948	162104	21270	222537	158913	22988	200380	154773	24808	179736	143343	25956	174474	141453	27354	168862	139561	28844		
		80	69	247044	116658	21585	234965	113639	23334	230164	111627	25774	206631	102489	26990	200739	101043	28456	194487	99594	30018	
			67	242385	135577	21475	229391	131297	23181	218651	128087	25407	196249	117925	26598	190608	115405	28038	184611	113902	29573	
			65	236940	144274	21342	224798	140563	23052	208441	136943	25071	187021	126360	26237	181591	123879	27654	175809	122417	29163	
			63	231496	152971	21210	220205	149828	22922	198231	145799	24735	177792	134795	25877	172573	132353	27270	167006	130932	28754	
		78	69	243544	104130	21501	231643	101221	23242	226953	99282	25669	203738	90870	26879	197918	89439	28338	191738	88004	29891	
			67	238978	123655	21392	226732	119464	23107	216121	116321	25323	193967	106802	26507	188380	104784	27942	182438	103273	29471	
			65	233641	133647	21262	221951	130011	22971	205775	126305	24981	184611	116269	26141	179236	114019	27551	173510	112530	29054	
	63		228304	143639	21131	217169	140558	22835	195430	136289	24639	175256	125737	25774	170092	123253	27160	164582	121788	28637		
	76	69	240044	91603	21417	228320	88803	23150	223741	86937	25565	200845	79251	26767	195097	77835	28219	188989	76415	29765		
		67	235571	111734	21310	224073	107631	23032	213590	104554	25239	191684	95679	26417	186152	94163	27846	180266	92643	29368		
		65	230341	123020	21181	219103	119459	22890	203110	115667	24891	182202	106179	26044	176882	104158	27448	171212	102644	28944		
		63	225112	134306	21052	214133	131287	22749	192630	126780	24543	172719	116679	25671	167612	114153	27050	162158	112645	28519		
	7620	84.2	82	66.2	265345	183931	22014	252318	179473	23805	240436	175015	26104	215871	163868	27301	209746	161790	28833	203256	159710	30418
				69	265846	152844	22028	252788	148519	23820	247358	147077	26321	222093	136634	27574	215809	134514	29078	209158	133774	30679
				67	261855	171198	21934	249009	167483	23716	237294	163025	26006	213043	151740	27238	206989	150317	28721	200572	148182	30299
				65	257283	185995	21826	244678	181908	23598	227039	175221	25679	203801	163003	26889	197972	161632	28348	191784	159551	29903
			63	252711	200791	21718	240346	196333	23480	216784	187417	25352	194559	174268	26539	188955	172948	27976	182996	170921	29506	
			80	69	262277	135811	21945	249406	131618	23728	244100	130221	26218	219167	121371	27465	212958	119264	28962	206384	118493	30555
				67	258365	158466	21853	245700	155493	23628	234152	151035	25907	210216	139613	27133	204233	138844	28609	197888	136653	30180
65				253755	173262	21743	241332	169547	23507	223912	162860	25578	200984	150875	26781	195224	150159	28234	189106	148023	29781	
63				249145	188059	21633	236964	183601	23387	213672	174685	25249	191752	162138	26429	186215	161474	27859	180324	159393	29381	
78			69	258329	119777	21852	245664	116385	23626	240491	115038	26103	215923	106389	27342	209797	104929	28831	203307	103515	30416	
			67	254522	143693	21762	242056	140070	23528	230692	136417	25795	207101	125776	27013	201196	124290	28481	194929	122774	30044	
			65	250225	159509	21659	237984	155469	23415	220777	149556	25475	198159	138247	26670	192467	136790	28116	186419	135319	29655	
		63	245929	175326	21556	233911	170868	23301	210863	162695	25155	189216	150718	26328	183738	149290	27751	177908	147864	29266		
76		69	254381	103743	21758	241922	101151	23524	236883	99855	25987	212678	91407	27219	206636	90594	28700	200231	88537	30277		
		67	250678	128920	21671	238412	124647	23428	227232	121798	25683	203866	111940	26893	196159	109737	28353	191971	108895	29908		
		65	246695	145757	21574	234636	141391	23322	217643	136251	25372	195333	125619	26560	189710	123421	27998	183732	122615	29530		
		63	242712	162593	21478	230859	158135	23216	208054	150705	25060	186680	139298	26226	181262	137106	27643	175492	136336	29151		
8325		84.2	82	66.2	271043	191949	22147	257712	188650	23949	245550	183702	26266	220468	171831	27516	214225	169478	29017	207615	168706	30614
				69	270548	159474	22138	257238	155498	23939	251645	153897	26456	225943	142751	27719	219558	141887	29231	212805	139491	30842
				67	266938	179108	22053	253822	174984	23846	241860	170860	26151	217149	158814	27394	210990	157189	28886	204466	156358	30475
			65	262898	194653	21958	249997	190117	23742	232001	183931	25839	208270	171264	27060	202330	169302	28531	196030	167882	30097	
			63	258858	210198	21863	246171	205249	23639	222141	197002	25527	199391	183714	26726	193671	181416	28176	187593	179405	29719	
			80	69	266413	142131	22042	253322	137478	23834	247873	135826	26337	222557	126513	27593	216260	125620	29097	209597	123241	30700
		67		262834	166266	21959	249933	161317	23743	238170	158018	26036	213830	145797	27271	207755	144900	28755	201317	144011	30336	
	65	258930		181398	21866	246236	176450	23641	228486	170677	25727	205105	158639	26940	199245	157014	28403	193024	156182	29961		
	63	255026		196531	21773	242539	191583	23540	218802	183335	25418	196381	171482	26610	190734	169127	28051	184731	168354	29586		
	69	262228		125054	21943	249358	121288	23727	244052	119793	26216	219123	111253	27463	212915	109655	28960	206342	107999	30553		
	67	258756		149724	21862	246069	145669	23638	234502	142438	25918	210530	131054	27144	204539	130121	28621	198185	129194	30193		
	65	254960	166294	21771	242473	162205	23538	224967	156466	25612	201935	144759	26817	196152	143480	28272	190011	142203	29822			
63	251163	182865	21680	238876	178741	23438	215432	170494	25306	193340	158465	26490	187766	156838	27923	181836	155213	29450				
76	69	258043	107976	21845	245393	105099	23619	240230	103660	26095	215688	95994	27333	209569	93689	28822	203086	92756	30407			
	67	254679	133182	21766	242205	130020	23532	230834	128858	25800	207230	116312	27018	201322	115342	28486	195053	114377	30050			
	65	250990	151190	21677	238709	147960	23435	221448	142255	25497	198765	130880	26694	193060	129946	28141	186997	128224	29682			
	63	247301	169198	21588	235213	165899	23337	212062	157652	25194	190300	145448	26370	184798	144549	27796	178942	142072	29314			

# UNIT SPECIFICATIONS

## COOLING PERFORMANCE DATA FOR 25TR

Model	Evaporator CFM	Dry Bulb Temp. F	Wet Bulb Temp. F	85F			95F			105F			115F			120F			125F		
				Capacity Btuh	Sensible capacity Btuh	Power Input Watt	Capacity Btuh	Sensible capacity Btuh	Power Input Watt	Capacity Btuh	Sensible capacity Btuh	Power Input Watt	Capacity Btuh	Sensible capacity Btuh	Power Input Watt	Capacity Btuh	Sensible capacity Btuh	Power Input Watt	Capacity Btuh	Sensible capacity Btuh	Power Input Watt
6750	84.2	66.2	285466	181586	25473	269982	176237	27589	255376	170887	30360	237560	164714	33270	228714	162053	34915	219518	158061	36634	
		69	286485	151833	25498	270948	146643	27615	263681	144047	30632	245361	138792	33570	236278	136210	35231	226842	133002	36968	
		67	281135	169458	25361	265869	164778	27469	251471	159428	30228	233893	153312	33123	225158	150650	34759	216075	147324	36470	
		65	275264	180814	25209	260295	178094	27305	239243	170070	29812	222389	163568	32662	213995	160907	34271	205259	157580	35954	
	82	63	269394	192169	25056	254721	191411	27141	227015	180712	29397	210886	173825	32200	202832	171163	33784	194443	167836	35437	
		69	282040	136065	25384	266728	131034	27493	259606	128518	30495	241538	124125	33419	232573	121622	35072	223256	117867	36800	
		67	276804	157330	25250	261756	153318	27349	247566	147969	30095	230225	141910	32976	221602	139248	34604	212632	136587	36306	
		65	271388	169222	25108	256613	166635	27196	235799	158611	29694	219151	152499	32530	210854	149837	34132	202216	146510	35806	
	80	63	265973	181114	24967	251470	179952	27044	224032	169253	29292	208078	163088	32083	200107	160426	33660	191801	156434	35306	
		69	277580	121132	25268	262491	116284	27369	255513	114443	30356	237695	109675	33266	228848	107263	34910	219651	104225	36629	
		67	272464	143089	25137	257632	139160	27227	243649	133921	29961	226543	128042	32827	218031	125436	34446	209173	122830	36139	
		65	267165	157419	24998	252599	153492	27077	232049	145857	29562	215622	139864	32384	207429	137230	33978	198897	134263	35643	
	78	63	261866	171748	24858	247565	167824	26927	220448	157793	29164	204701	151685	31941	196828	149024	33509	188621	145697	35146	
		69	273120	106200	25153	258255	101534	27244	251421	100368	30218	233853	95226	33112	225123	92904	34748	216045	90583	36458	
		67	268124	128849	25024	253508	125002	27106	239731	119874	29826	222861	114175	32677	214459	111624	34288	205715	109073	35972	
		65	262942	145616	24887	248584	140349	26958	228298	133104	29431	212093	127229	32238	204004	124623	33823	195578	122016	35479	
	76	63	257759	162383	24750	243660	155696	26811	216864	146334	29037	201324	140283	31799	193549	137622	33358	185441	134960	34987	
		69	273120	106200	25153	258255	101534	27244	251421	100368	30218	233853	95226	33112	225123	92904	34748	216045	90583	36458	
		67	268124	128849	25024	253508	125002	27106	239731	119874	29826	222861	114175	32677	214459	111624	34288	205715	109073	35972	
		65	262942	145616	24887	248584	140349	26958	228298	133104	29431	212093	127229	32238	204004	124623	33823	195578	122016	35479	
	9525	84.2	66.2	305476	216159	25978	288968	212444	28130	273386	206872	30957	<b>254464</b>	<b>200298</b>	<b>33928</b>	245098	196601	35609	235375	194753	37367
			69	304891	179588	25965	288409	175110	28116	280526	172379	31189	261159	166142	34185	251584	164349	35879	241650	160762	37651
			67	300510	201698	25853	284256	197054	27997	268917	191481	30810	250270	185908	33767	241034	182212	35439	231442	180364	37187
			65	295697	219203	25730	279692	214095	27865	257323	205737	30425	239381	199630	33341	230475	196053	34989	221220	191946	36712
82		63	290885	236709	25607	275128	231137	27733	245729	219992	30040	228492	213353	32915	219917	209894	34539	210997	203528	36237	
		69	299850	160058	25838	283628	154817	27980	275916	153070	31038	256838	147094	34018	247399	145356	35704	237602	141880	37467	
		67	295544	187236	25729	<b>279543</b>	<b>181664</b>	<b>27863</b>	264448	176091	30663	246077	171519	33605	236970	167822	35268	227509	165974	37007	
		65	290892	204278	25608	275132	198705	27734	253069	190346	30282	235387	184779	33183	226603	182006	34822	217471	179234	36536	
80		63	286241	221319	25488	270721	215746	27605	241690	204601	29901	224697	198039	32761	216237	196191	34377	207434	192494	36065	
		69	294822	140826	25709	278857	136586	27842	271315	134092	30884	252524	129206	33849	243219	126725	35525	233559	124181	37278	
		67	290638	168608	25603	274889	163151	27728	260033	158584	30514	241934	153289	33440	232954	150555	35094	223623	147859	36823	
		65	286113	187268	25485	270596	181754	27601	248837	174362	30137	231411	168469	33022	222748	165716	34652	213739	162982	36357	
78		63	281588	205929	25367	266303	200356	27475	237641	190140	29760	220889	183649	32605	212543	180877	34211	203855	178105	35890	
		69	289793	121594	25580	274086	118354	27704	266713	115114	30731	248209	111317	33679	239039	108093	35346	229515	106481	37090	
		67	285733	149980	25477	270234	144638	27593	255618	141077	30365	237790	135060	33275	228938	133288	34919	219737	129745	36639	
		65	281334	170259	25362	266059	164802	27469	244604	158378	29992	227436	152160	32861	218893	149426	34483	210007	146730	36177	
76		63	276935	190538	25247	261885	184966	27345	233591	175678	29620	217081	169260	32448	208848	165563	34046	200276	163715	35715	
		69	289793	121594	25580	274086	118354	27704	266713	115114	30731	248209	111317	33679	239039	108093	35346	229515	106481	37090	
		67	285733	149980	25477	270234	144638	27593	255618	141077	30365	237790	135060	33275	228938	133288	34919	219737	129745	36639	
		65	281334	170259	25362	266059	164802	27469	244604	158378	29992	227436	152160	32861	218893	149426	34483	210007	146730	36177	
10400		84.2	66.2	309925	231684	26091	293186	225498	28250	277382	221375	31089	258210	214119	34075	248727	212068	35763	238886	210016	37529
			69	309022	190367	26069	292326	186366	28227	284301	183335	31313	264698	178442	34320	255012	175487	36022	244966	172471	37802
			67	304929	214601	25964	288448	209447	28115	272892	205323	30940	254000	198147	33910	244648	196096	35590	234940	193018	37346
			65	300299	233516	25846	284057	227847	27989	261390	221146	30560	243200	211559	33491	234178	207305	35147	224804	202963	36879
	82	63	295669	252432	25729	279667	246247	27863	249888	236969	30181	232400	224970	33071	223707	218513	34705	214668	212908	36412	
		69	303827	167965	25939	287398	164087	28088	279551	162148	31159	260245	157483	34151	250699	153624	35844	240794	151695	37614	
		67	299932	197518	25837	283709	193395	27979	268401	189271	30791	249789	182175	33745	240569	180124	35416	230994	176021	37163	
		65	295426	216434	25722	279435	211279	27856	257081	205094	30415	239156	197919	33330	230258	194842	34978	221011	191765	36701	
	80	63	290920	235349	25608	275162	229164	27733	245760	220917	30040	228523	213663	32915	219948	209560	34540	211028	207509	36238	
		69	298691	147869	25808	282527	144132	27948	274854	142263	31002	255842	137837	33978	246434	134119	35662	236669	132259	37422	
		67	294841	178043	25708	278877	174005	27841	263818	168979	30639	245487	163094	33577	236399	161085	35239	226958	157067	36976	
		65	290499	198670	25596	274759	193558	27721	252717	186406	30268	235058	180393	33167	226285	177337	34805	217164	174302	36518	
	78	63																			

# UNIT SPECIFICATIONS

## FAN PERFORMANCE DATA FOR 3TR-7.5 TR

**MODEL 3RTH036GC1 - 3RTH048GC1 - 50HZ UNITS**

MODEL	SPEED MODE	AIR FLOW (CFM)						
		EXTERNAL STATIC PRESSURE (IN WG)						
		0.05	0.10	0.20	0.30	0.40	0.50	0.60
3RTH036GC1	LOW SPEED	1374	1302	1224	1141	1048	....	....
	HIGH SPEED	...	1385	1297	1214	1122	....	....
3RTH048GC1	LOW SPEED	1734	1665	1589	1510	1419	....	....
	HIGH SPEED	1831	1757	1676	1583	1488	....	....

**MODEL 3RTH060GC1**

External static pressure (inch of WG)																			
Air flow	0.2		0.35		0.4		0.6		0.8		1.0		1.2		1.4		1.6		
(cfm)	RPM	BHP	RPM	BHP	RPM	BHP	RPM	BHP	RPM	BHP	RPM	BHP	RPM	BHP	RPM	BHP	RPM	BHP	
1400	1020	0.35	1071	0.45	1087	0.48	1189	0.53	1255	0.59	1310	0.68	1397	0.62	1459	0.87	1535	1.02	
1600	1025	0.45	1081	0.53	1100	0.56	1192	0.62	1260	0.70	1315	0.80	1400	0.80	1461	1.00	1537	1.15	
1962	1034	0.63	1101	0.69	1123	0.71	1197	0.78	1269	0.90	1323	1.02	1405	1.12	1465	1.23	...	...	
2000	1035	0.65	1103	0.70	1126	0.72	1198	0.80	1270	0.92	1324	1.05	1406	1.15	1468	1.25	...	...	
2100	1043	0.71	1108	0.77	1130	0.79	1204	0.85	1272	0.99	1328	1.13	1410	1.23	...	...	...	...	

**MODEL 3RTH072GC1**

External static pressure (inch of WG)																
Air flow	0.2		0.4		0.6		0.8		1.0		1.2		1.4		1.6	
(cfm)	RPM	BHP	RPM	BHP	RPM	BHP	RPM	BHP	RPM	BHP	RPM	BHP	RPM	BHP	RPM	BHP
1600	1025	0.45	1100	0.56	1192	0.62	1260	0.70	1315	0.80	1400	0.80	1461	1.00	1537	1.15
1800	1028	0.56	1110	0.65	1195	0.70	1264	0.83	1320	0.90	1404	1.00	1454	1.15	1539	1.22
2000	1035	0.65	1126	0.72	1198	0.80	1270	0.92	1324	1.05	1406	1.15	1468	1.25	...	...
2286	1061	0.82	1141	0.92	1212	0.99	1278	1.12	1333	1.24	...	...	...	...	...	...
2400	1075	0.90	1151	1.00	1215	1.10	1283	1.22	...	...	...	...	...	...	...	...
2500	1088	1.00	1164	1.10	1223	1.18	1292	1.29	...	...	...	...	...	...	...	...

External static pressure (inch of WG)																				
Air flow	0.2		0.4		0.6		0.8		1.0		1.2		1.4		1.6		1.8		2.0	
(cfm)	RPM	BHP	RPM	BHP	RPM	BHP	RPM	BHP	RPM	BHP	RPM	BHP	RPM	BHP	RPM	BHP	RPM	BHP	RPM	BHP
2000	702	0.54	766	0.67	830	0.80	882	0.96	934	1.12	984	1.27	...	...	...	...	...	...	...	...
2200	704	0.60	768	0.73	832	0.86	884	1.02	936	1.18	...	...	...	...	...	...	...	...	...	...
2400	706	0.66	770	0.79	834	0.92	886	1.08	938	1.24	...	...	...	...	...	...	...	...	...	...
2600	708	0.72	772	0.85	836	0.98	888	1.14	...	...	...	...	...	...	...	...	...	...	...	...
2857	710	0.78	774	0.91	838	1.05	890	1.21	...	...	...	...	...	...	...	...	...	...	...	...
3000	712	0.82	776	0.96	840	1.10	892	1.26	...	...	...	...	...	...	...	...	...	...	...	...
3200	714	0.91	778	1.04	842	1.18	...	...	...	...	...	...	...	...	...	...	...	...	...	...

NOTE  
 ABOVE DATA INCLUDES THE LOSSES THROUGH WET COIL AND CASING  
 AREAS SHADED INDICATE OPERATING RANGE INSIDE THE STANDARD MOTOR.  
 IF BHP IS EXCEEDING THAN THE STANDARD MOTOR THEN HIGHER CAPACITY MOTOR CAN BE PROVIDED AS AN OPTION.  
 BOLD FONT IN RPM COLUMN INDICATE BLOWER SPEED WITH FACTORY SETTING.

# UNIT SPECIFICATIONS

## FAN PERFORMANCE DATA FOR 10TR-15 TR UNITS

### MODEL 3RTH120GC2

External static pressure (inch of WG)																				
Air flow	0.2		0.4		0.6		0.8		1.0		1.2		1.4		1.6		1.8		2.0	
(cfm)	RPM	BHP	RPM	BHP	RPM	BHP	RPM	BHP	RPM	BHP	RPM	BHP	RPM	BHP	RPM	BHP	RPM	BHP	RPM	BHP
2600	740	0.74	804	0.87	862	0.99	914	1.16	966	1.30	1014	1.44	1062	1.61	1096	1.81	1117	2.04	...	...
2700	741	0.78	805	0.91	863	1.04	915	1.21	967	1.35	1015	1.50	1063	1.67	1097	1.87	1118	2.10	...	...
2800	742	0.82	806	0.95	864	1.08	916	1.25	968	1.40	1016	1.55	1064	1.72	1098	1.92	1119	2.15	...	...
3000	744	0.90	808	1.03	866	1.17	918	1.34	970	1.50	1018	1.66	1066	1.83	1100	2.03	1121	2.26	...	...
3200	746	0.98	810	1.11	868	1.26	920	1.43	972	1.60	1020	1.77	1068	1.94	1102	2.14	1123	2.37	...	...
3400	748	1.06	812	1.19	870	1.35	922	1.52	974	1.70	1022	1.88	1070	2.05	1104	2.25	1125	2.48	...	...
3600	750	1.15	814	1.28	872	1.43	924	1.62	976	1.80	1024	1.98	1072	2.17	1107	2.37	...	...	...	...
3810	752	1.24	816	1.36	874	1.52	926	1.71	978	1.91	1026	2.10	1074	2.29	1109	2.49	...	...	...	...
4000	754	1.32	818	1.44	876	1.60	928	1.80	980	2.00	1028	2.20	1076	2.40	...	...	...	...	...	...
4200	756	1.44	820	1.57	878	1.74	930	1.95	982	2.16	1031	2.38	...	...	...	...	...	...	...	...

### MODEL 3RTH150GC2

External static pressure (inch of WG)																				
Air flow	0.2		0.4		0.6		0.8		1.0		1.2		1.4		1.6		1.8		2.0	
(cfm)	RPM	BHP	RPM	BHP	RPM	BHP	RPM	BHP	RPM	BHP	RPM	BHP	RPM	BHP	RPM	BHP	RPM	BHP	RPM	BHP
3400	748	1.07	812	1.20	870	1.34	922	1.53	974	1.70	1022	1.87	1070	2.06	1105	2.26	1126	2.47	...	...
3600	750	1.15	814	1.28	872	1.43	924	1.62	976	1.80	1024	1.98	1072	2.17	1107	2.37	1128	2.58	...	...
3800	752	1.23	816	1.36	874	1.52	926	1.71	978	1.90	1026	2.09	1074	2.28	1109	2.48	...	...	...	...
4000	754	1.32	818	1.44	876	1.60	928	1.80	980	2.00	1028	2.20	1076	2.40	...	...	...	...	...	...
4200	756	1.44	820	1.57	878	1.74	930	1.95	982	2.16	1031	2.38	...	...	...	...	...	...	...	...
4400	758	1.55	822	1.70	880	1.89	932	2.10	984	2.32	1034	2.55	...	...	...	...	...	...	...	...
4600	760	1.67	824	1.84	882	2.03	934	2.26	986	2.48	...	...	...	...	...	...	...	...	...	...
4762	762	1.76	826	1.95	884	2.15	936	2.38	...	...	...	...	...	...	...	...	...	...	...	...
5000	764	1.90	828	2.10	886	2.32	938	2.56	...	...	...	...	...	...	...	...	...	...	...	...
5200	766	2.02	830	2.23	888	2.46	...	...	...	...	...	...	...	...	...	...	...	...	...	...

### MODEL 3RTH180GC2

External static pressure (inch of WG)																				
Air flow	0.2		0.4		0.6		0.8		1.0		1.2		1.4		1.6		1.8		2.0	
(cfm)	RPM	BHP	RPM	BHP	RPM	BHP	RPM	BHP	RPM	BHP	RPM	BHP	RPM	BHP	RPM	BHP	RPM	BHP	RPM	BHP
4000	680	1.59	730	1.65	775	1.95	800	2.05	860	2.55	900	2.65	940	3.00	990	3.30	1010	3.70	1062	3.90
4200	690	1.67	740	1.80	785	2.10	810	2.20	870	2.65	905	2.80	950	3.10	995	3.40	1020	3.80	1066	4.00
4400	700	1.75	750	1.95	795	2.25	820	2.35	880	2.75	910	2.95	960	3.20	1000	3.50	1030	3.90	1070	4.10
4600	710	1.83	760	2.10	805	2.40	830	2.50	890	2.85	915	3.10	970	3.30	1005	3.60	1040	4.00	1074	4.20
4800	725	2.00	780	2.25	810	2.50	850	2.70	900	3.00	925	3.25	975	3.50	1010	3.90	1050	4.10	1078	4.50
5000	735	2.20	790	2.50	820	2.60	860	2.90	905	3.20	930	3.40	980	3.70	1013	4.00	1060	4.20	1082	4.80
5200	740	2.30	795	2.60	825	2.80	865	3.00	910	3.40	935	3.50	985	3.95	1018	4.10	1062	4.40	...	...
5400	750	2.50	800	2.75	830	2.95	875	3.25	915	3.50	945	3.80	990	4.20	1022	4.25	1065	4.75	...	...
5715	777	2.82	808	3.04	844	3.35	889	3.64	926	3.89	962	4.23	998	4.46	1029	4.83	...	...	...	...
5800	785	2.90	810	3.15	850	3.50	895	3.75	930	4.00	970	4.40	1000	4.50	...	...	...	...	...	...
6000	800	3.25	820	3.40	870	3.70	900	4.00	945	4.35	980	4.70	1010	4.90	...	...	...	...	...	...
6200	810	3.35	830	3.50	880	3.90	910	4.20	955	4.50	990	4.90	...	...	...	...	...	...	...	...

**NOTE**

ABOVE DATA INCLUDES THE LOSSES THROUGH WET COIL AND CASING  
 AREAS SHADED INDICATE OPERATING RANGE INSIDE THE STANDARD MOTOR.  
 IF BHP IS EXCEEDING THAN THE STANDARD MOTOR THEN HIGHER CAPACITY MOTOR CAN BE PROVIDED AS AN OPTION.  
 BOLD FONT IN RPM COLUMN INDICATE BLOWER SPEED WITH FACTORY SETTING.



# UNIT SPECIFICATIONS

## FAN PERFORMANCE DATA FOR 18TR-25 TR UNITS

### MODEL 3RTH216GC2

Air flow (cfm)	External static pressure (inch of WG)																			
	0.2		0.4		0.6		0.8		1.0		1.2		1.4		1.6		1.8		2.0	
	RPM	BHP	RPM	BHP	RPM	BHP	RPM	BHP	RPM	BHP	RPM	BHP	RPM	BHP	RPM	BHP	RPM	BHP	RPM	BHP
4800	726.1	1.24	781.2	1.53	832.6	1.79	881.8	2.07	923.9	2.43	987	2.88	1029	2.88	1076	3.46	1114	3.60	1159	3.86
4900	728.8	1.30	783.5	1.59	835	1.85	884.5	2.13	926.8	2.49	989.5	2.94	1032	2.96	1079	3.54	1117	3.67	1161	3.93
5000	731.4	1.36	785.8	1.65	837.4	1.92	887.2	2.19	929.6	2.56	992	3.00	1035	3.04	1081	3.61	1120	3.73	1163	4.01
5200	736.7	1.49	790.4	1.77	842.2	2.04	892.6	2.31	935.3	2.68	997	3.13	1041	3.20	1087	3.76	1126	3.87	1168	4.16
5400	742	1.61	795	1.89	847	2.17	898	2.43	941	2.81	1002	3.26	1047	3.36	1092	3.91	1132	4.00	1173	4.31
5600	748	1.74	800	2.03	852	2.30	904	2.57	947	2.94	1007	3.41	1052	3.53	1098	4.05	1138	4.14	1178	4.47
5800	752	1.85	804	2.10	856	2.41	908	2.65	952	3.06	1012	3.50	1060	3.67	1102	4.20	1144	4.28	1182	4.61
6000	757	1.96	808	2.27	862	2.54	914	2.77	958	3.17	1017	3.62	1065	3.88	1108	4.35	1150	4.38	1188	4.74
6200	764	2.12	814	2.37	866	2.68	920	2.93	964	3.33	1022	3.80	1070	4.00	1114	4.50	1156	4.55	1192	4.92
6400	769	2.18	820	2.45	870	2.76	925	3.03	970	3.42	1030	3.92	1075	4.10	1120	4.64	1162	4.67	...	...
6600	774	2.29	826	2.53	876	2.86	930	3.11	976	3.53	1035	4.00	1080	4.22	1126	4.79	1168	4.79	...	...
6858	780.5	2.43	832.5	2.65	885	3.02	936.5	3.27	985	3.73	1042	4.21	1086	4.39	...	...	...	...	...	...
7000	784	2.50	836	2.72	890	3.11	940	3.36	990	3.83	1046	4.32	1090	4.48	...	...	...	...	...	...
7200	792	2.62	840	2.85	898	3.22	945	3.49	995	3.97	1052	4.48	1096	4.63	...	...	...	...	...	...
7400	799	2.75	848	3.04	906	3.35	950	3.65	1000	4.12	1060	4.64	1100	4.77	...	...	...	...	...	...
7500	801.5	2.80	850.5	3.08	908	3.40	953	3.71	1003	4.20	1063	4.72	1103	4.85	...	...	...	...	...	...

### MODEL 3RTH240GC2

Air flow (cfm)	External static pressure (inch of WG)																			
	0.2		0.4		0.6		0.8		1.0		1.2		1.4		1.6		1.8		2.0	
	RPM	BHP	RPM	BHP	RPM	BHP	RPM	BHP	RPM	BHP	RPM	BHP	RPM	BHP	RPM	BHP	RPM	BHP	RPM	BHP
5400	763	1.64	818	2.11	872	2.28	923	2.67	971	2.91	1040	3.40	1084	3.52	1136	3.92	1180	4.32	1223	4.64
5600	767	1.76	822	2.19	876	2.40	928	2.77	975	3.04	1042	3.50	1087	3.68	1138	4.08	1182	4.48	1225	4.80
5800	771	1.88	826	2.27	880	2.52	933	2.87	979	3.17	1044	3.60	1090	3.84	1140	4.24	1184	4.64	...	...
6000	775	2.00	830	2.35	884	2.64	938	2.97	983	3.30	1046	3.70	1093	4.00	1142	4.40	1186	4.80	...	...
6200	779	2.12	834	2.43	888	2.76	943	3.07	987	3.43	1048	3.80	1096	4.16	1144	4.56	...	...	...	...
6400	787	2.25	846	2.63	896	2.91	950	3.21	1000	3.56	1050	3.93	1100	4.40	1146	4.72	...	...	...	...
6600	795	2.43	851	2.75	907	3.07	953	3.39	1003	3.73	1053	4.12	1102	4.53	1148	4.88	...	...	...	...
6800	800	2.50	857	2.84	910	3.17	957	3.50	1006	3.83	1056	4.25	1104	4.65	...	...	...	...	...	...
7000	804	2.63	861	2.93	914	3.28	960	3.60	1010	3.96	1058	4.34	1106	4.79	...	...	...	...	...	...
7200	807	2.70	863	3.03	918	3.42	962	3.71	1013	4.13	1060	4.52	...	...	...	...	...	...	...	...
7400	814	2.87	867	3.15	920	3.57	967	3.89	1016	4.30	1062	4.69	...	...	...	...	...	...	...	...
7500	817.5	2.94	870.5	3.23	922	3.63	968.5	3.97	1017	4.38	1064	4.78	...	...	...	...	...	...	...	...
7620	821.7	3.02	874.4	3.32	923	3.71	970.6	4.06	1018	4.47	1066	4.88	...	...	...	...	...	...	...	...
7800	828	3.15	878	3.53	927	3.84	976	4.22	1022	4.62	...	...	...	...	...	...	...	...	...	...
8000	835	3.27	885	3.61	933	3.96	983	4.36	1028	4.80	...	...	...	...	...	...	...	...	...	...
8200	850	3.46	903	3.88	943	4.19	990	4.63	...	...	...	...	...	...	...	...	...	...	...	...
8400	855	3.61	906	4.00	946	4.38	1000	4.81	...	...	...	...	...	...	...	...	...	...	...	...

### MODEL 3RTH300GC2

Air flow (cfm)	External static pressure (inch of WG)																			
	0.2		0.4		0.6		0.8		1.0		1.2		1.4		1.6		1.8		2.0	
	RPM	BHP	RPM	BHP	RPM	BHP	RPM	BHP	RPM	BHP	RPM	BHP	RPM	BHP	RPM	BHP	RPM	BHP	RPM	BHP
6600	801	2.42	869	2.70	914	3.05	961	3.43	1008	3.66	1056	3.93	1106	4.64	1150	4.88	1194	5.36	1235	5.61
6800	808	2.55	872	2.85	917	3.20	966	3.57	1012	3.83	1061	4.22	1109	4.78	1153	5.08	1197	5.52	1238	5.83
7000	815	2.68	875	3.00	920	3.35	971	3.71	1016	4.00	1066	4.51	1112	4.92	1156	5.28	1200	5.68	1241	6.05
7200	822	2.81	878	3.15	923	3.50	976	3.85	1020	4.17	1071	4.80	1115	5.06	1159	5.48	1203	5.84	1244	6.27
7400	829	2.93	881	3.30	933	3.64	980	4.00	1025	4.40	1074	4.87	1118	5.22	1162	5.65	1205	6.00	1247	6.51
7600	842	3.11	892	3.46	940	3.82	987	4.18	1031	4.62	1081	4.97	1125	5.38	1168	5.84	1208	6.22	1253	6.75
7800	850	3.27	900	3.61	947	3.96	996	4.40	1037	4.78	1084	5.21	1127	5.58	1170	5.92	1211	6.44	1256	6.97
8000	853	3.38	910	3.80	953	4.18	1000	4.54	1044	4.97	1088	5.36	1129	5.75	1173	6.17	1214	6.66	1259	7.19
8200	871	3.61	916	3.98	966	4.40	1012	4.81	1056	5.15	1098	5.60	1141	5.91	1179	6.45	1219	6.94	...	...
8400	873	3.77	923	4.19	973	4.54	1015	5.00	1060	5.39	1103	5.78	1144	6.17	1183	6.68	1225	7.22	...	...
8600	880	3.92	933	4.38	976	4.77	1018	5.13	1066	5.56	1107	5.95	1147	6.35	1186	6.91	...	...	...	...
8800	886	4.15	935	4.52	980	4.90	1026	5.36	1070	5.74	1111	6.11	1150	6.58	1191	7.14	...	...	...	...
9000	902	4.34	943	4.76	990	5.09	1033	5.54	1076	5.95	1116	6.36	1158	6.76	1198	7.37	...	...	...	...
9200	906	4.55	950	4.95	997	5.39	1038	5.72	1082	6.18	1122	6.70	1161	7.17	...	...	...	...	...	...
9525	916.8	4.86	958.5	5.259	1006	5.65	1045	6.028	1092	6.526	1129	7.05	1168	7.536	...	...	...	...	...	...
9600	920	4.95	961	5.33	1008	5.72	1047	6.12	1094	6.62	1130	7.15	...	...	...	...	...	...	...	...
9800	935	5.20	979	5.60	1020	5.95	1061	6.50	1105	6.96	...	...	...	...	...	...	...	...	...	...
10000	941	5.40	987	5.76	1027	6.19	1068	6.68	1111	7.21	...	...	...	...	...	...	...	...	...	...
10200	950	5.56	994	5.96	1033	6.51	1072	7.00	...	...	...	...	...	...	...	...	...	...	...	...
10400	958	5.90	1005	6.30	1039	6.77	1083	7.25	...	...	...	...	...	...	...	...	...	...	...	...

**NOTE**

ABOVE DATA INCLUDES THE LOSSES THROUGH WET COIL AND CASING

AREAS SHADED INDICATE OPERATING RANGE INSIDE THE STANDARD MOTOR.

IF BHP IS EXCEEDING THAN THE STANDARD MOTOR THEN HIGHER CAPACITY MOTOR CAN BE PROVIDED AS AN OPTION.

BOLD FONT IN RPM COLUMN INDICATE BLOWER SPEED WITH FACTORY SETTING.

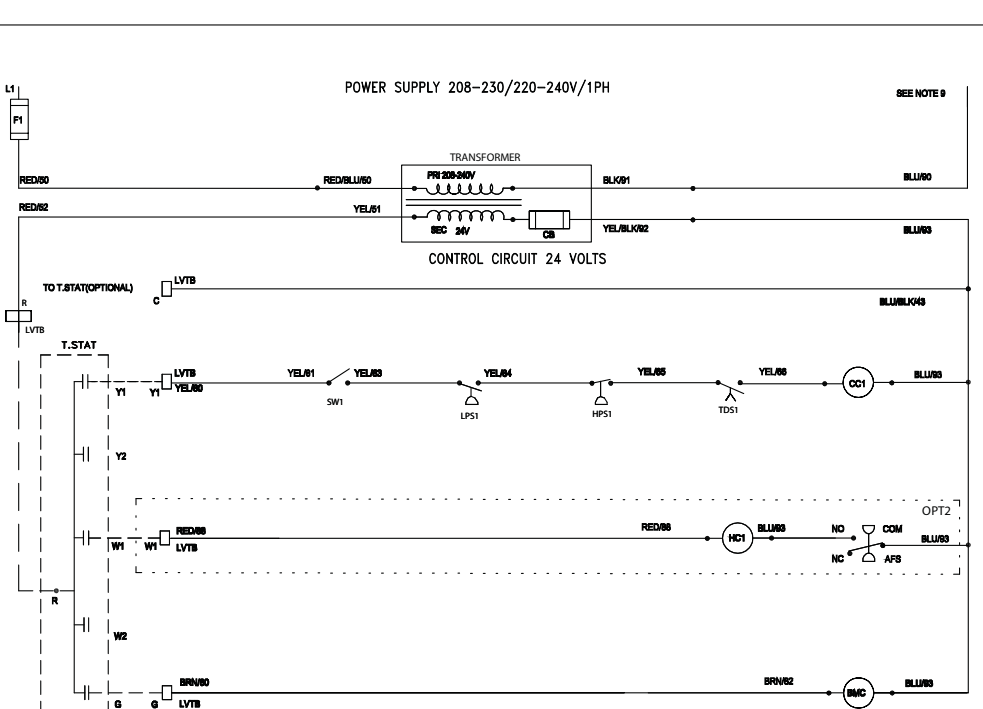
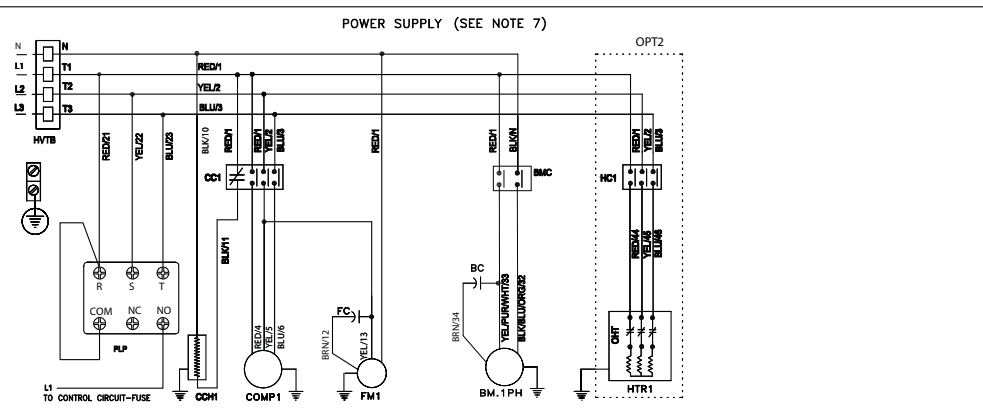
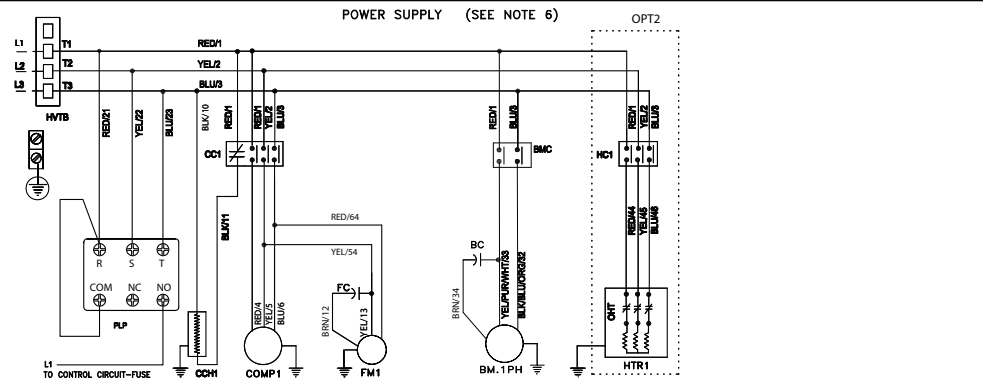
# UNIT SPECIFICATIONS

## WIRING DIAGRAM FOR 3TR & 4TR UNITS

**POWER SUPPLY**  
 THIS WIRING DIAGRAM SUITS  
 208-230 VOLTS / 3 PH / 60 HZ  
 380-415 V / 3 PH / 50 HZ WITH NEUTRAL  
 380-400 V / 3 PH / 60 HZ WITH NEUTRAL  
 460 VOLTS / 3 PH / 60 HZ WITH NEUTRAL  
 P.L. REFER UNIT NAME PLATE FOR YOUR UNIT'S  
 POWER SUPPLY

### WIRING DIAGRAM FOR PACKAGE UNITS

**WARNING**  
 THIS UNIT IS BUILT AND WIRED ACCORDING TO COMPANY STANDARDS AND / OR JOB ORDER'S SPECIFICATIONS. ANY UNAUTHORISED CHANGE OR  
 MODIFICATION OR SETTING OF ROOM THERMOSTAT TEMPERATURE BELOW 60°F WILL MAKE WARRANTY NULL & VOID.



- LEGEND**
- AFS - AIR FLOW SWITCH
  - BC - BLOWER CAPACITOR
  - BLK - BLACK
  - BLU - BLUE
  - BM - BLOWER MOTOR
  - BMC - BLOWER MOTOR CONTACTOR
  - BRN - BROWN
  - CC - COMP CONTACTOR
  - CCH - CRANK CASE HEATER
  - CB - CIRCUIT BREAKER
  - COMP - COMPRESSOR
  - F - FUSE
  - FC - FAN CAPACITOR
  - FM - FAN MOTOR
  - FMC - FAN MOTOR CONTACTOR
  - FMR - FAN MOTOR RELAY
  - HC - HEATER CONTACTOR
  - HPS - HIGH PRESSURE SWITCH
  - HTR - HEATER
  - HVTB - HIGH VOLTAGE TERMINAL BLOCK
  - L - LINE
  - LPS - LOW PRESSURE SWITCH
  - LVTB - LOW VOLTAGE TERMINAL BLOCK
  - N - NEUTRAL
  - NC - NORMALLY CLOSED
  - NO - NORMALLY OPEN
  - OHT - OVER HEAT THERMOSTAT
  - OPT - OPTIONAL
  - PLP - PHASE LOSS PROTECTION
  - PRI - PRIMARY
  - RED - RED
  - SEC - SECONDARY
  - SW - SWITCH ON / OFF
  - TDS - TIME DELAY SWITCH
  - TRANS - TRANSFORMER
  - T.STAT - THERMOSTAT
  - UVM - UNDER VOLTAGE MONITOR
  - YEL - YELLOW
  - — — — — FIELD WIRING
  - — — — — — TERMINAL / SPLICE
  - ..... OPTIONAL MARKING
  - ⊕ — — — — — EARTHING

- NOTES**
- 1) ANY WIRE REPLACEMENT SHOULD BE OF 90°C TYPE OR EQUIVALENT AND COPPER CONDUCTOR ONLY.
  - 2) POWER MUST BE SUPPLIED TO CRANK CASE HEATER FOR A MINIMUM OF 12 HOURS PRIOR TO START UP. IF THE POWER SUPPLY HAS BEEN INTERRUPTED FOR LONGER PERIOD THEN AGAIN CRANK CASE HEATER MUST BE ENERGIZED FOR A MINIMUM OF 12 HOURS BEFORE STARTING OF COMPRESSOR.
  - 3) FUSED DISCONNECT SWITCH OR CIRCUIT BREAKER TO BE PROVIDED BY THE USER WITH RELEVANT RATING.
  - 4) PLEASE ALLOW 2 TO 3 MINUTES BEFORE STARTING OF COMPRESSOR.
  - 5) COMPRESSOR IS PROVIDED WITH INTERNAL OVERLOAD PROTECTION.
  - 6) POWER CIRCUIT FOR 208-230V/3PH/60HZ
  - 7) POWER CIRCUIT FOR 380-415 V/3PH /50HZ, 380-400 V/3PH/60HZ & 460 V/3PH/60HZ WITH NEUTRAL
  - 8) REFER INSTRUCTIONS WITH THE COMPONENTS FOR STAR / DELTA CONNECTIONS
  - 9) IF THE POWER SUPPLY IS 230V, CONNECT TO L1 IF THE POWER SUPPLY IS 380V, CONNECT TO N

**OPTIONS**  
 OPT. 1 - NIL  
 OPT. 2 - SINGLE STAGE HEATING

WIR. DIA-RTH-1PH BLR-SPL  
 C240368 1BC011C85 02

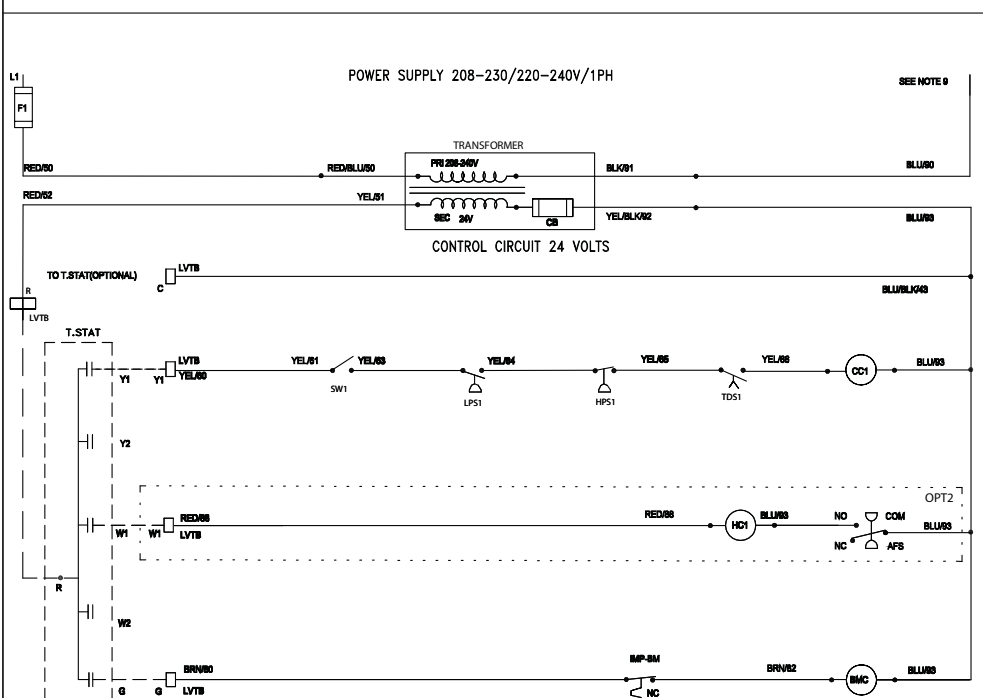
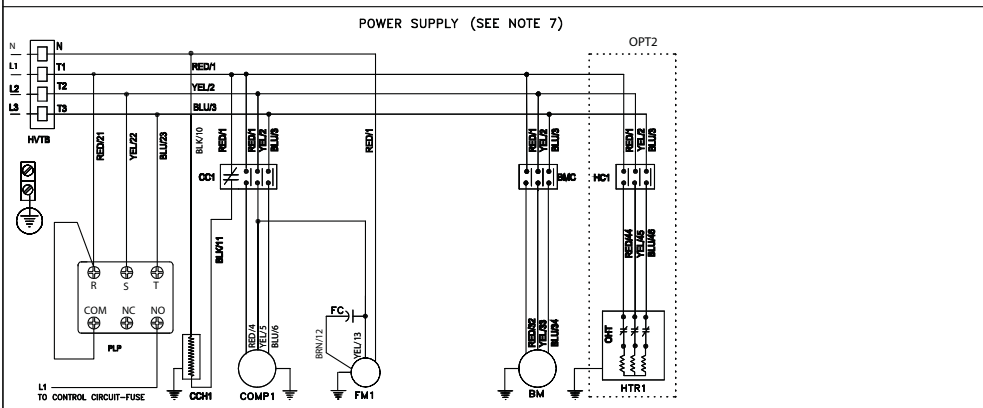
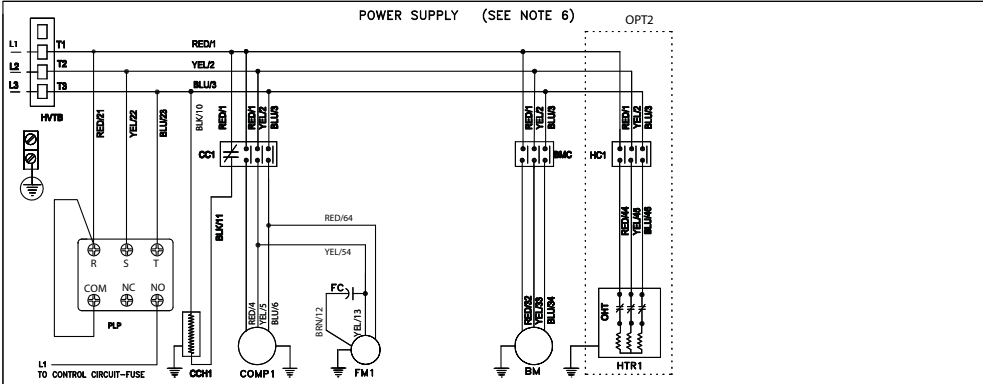
# UNIT SPECIFICATIONS

## WIRING DIAGRAM FOR 5TR & 6TR UNITS

**POWER SUPPLY**  
 THIS WIRING DIAGRAM SUITS  
 208-230 VOLTS / 3 PH / 60 HZ  
 380-415 V / 3 PH / 50 HZ WITH NEUTRAL  
 380-400 V / 3 PH / 60 HZ WITH NEUTRAL  
 460 VOLTS / 3 PH / 60 HZ WITH NEUTRAL  
 PL REFER UNIT NAME PLATE FOR YOUR UNIT'S  
 POWER SUPPLY

### WIRING DIAGRAM FOR PACKAGE UNITS

**WARNING**  
 THIS UNIT IS BUILT AND WIRED ACCORDING TO COMPANY STANDARDS AND / OR JOB ORDER'S SPECIFICATIONS. ANY UNAUTHORIZED CHANGE OR  
 MODIFICATION OR SETTING OF ROOM THERMOSTAT TEMPERATURE BELOW 60°F WILL MAKE WARRANTY NULL & VOID.



- LEGEND**
- AFS - AIR FLOW SWITCH
  - BLK - BLACK
  - BLU - BLUE
  - BM - BLOWER MOTOR
  - BMC - BLOWER MOTOR CONTACTOR
  - BRN - BROWN
  - CC - COMP CONTACTOR
  - CCH - CRANK CASE HEATER
  - CB - CIRCUIT BREAKER
  - COMP - COMPRESSOR
  - F - FUSE
  - FC - FAN CAPACITOR
  - FM - FAN MOTOR
  - FMC - FAN MOTOR CONTACTOR
  - FMR - FAN MOTOR RELAY
  - HC - HEATER CONTACTOR
  - HPS - HIGH PRESSURE SWITCH
  - HTR - HEATER
  - HVTB - HIGH VOLTAGE TERMINAL BLOCK
  - L - LINE
  - LPS - LOW PRESSURE SWITCH
  - LVTB - LOW VOLTAGE TERMINAL BLOCK
  - N - NEUTRAL
  - NC - NORMALLY CLOSED
  - NO - NORMALLY OPEN
  - OHT - OVER HEAT THERMOSTAT
  - OPT - OPTIONAL
  - PLP - PHASE LOSS PROTECTION
  - PRI - PRIMARY
  - RED - RED
  - SEC - SECONDARY
  - SW - SWITCH ON / OFF
  - TDS - TIME DELAY SWITCH
  - TRANS - TRANSFORMER
  - T.STAT - THERMOSTAT
  - UVM - UNDER VOLTAGE MONITOR
  - YEL - YELLOW
  - - - - - FIELD WIRING
  - - TERMINAL / SPLICE
  - ..... OPTIONAL MARKING
  - ⊕ - EARTHING

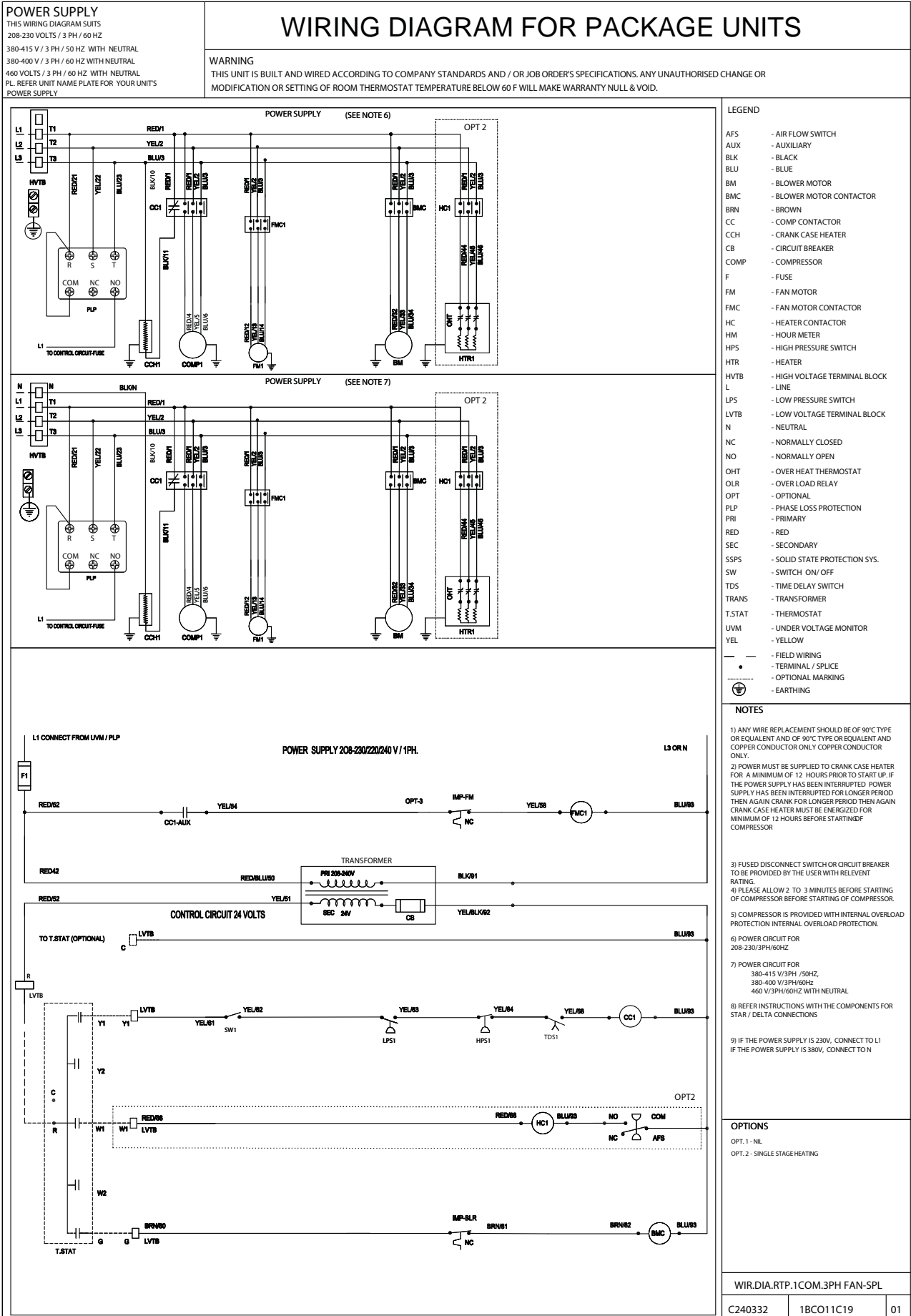
- NOTES**
- 1) ANY WIRE REPLACEMENT SHOULD BE OF 90°C TYPE OR EQUIVALENT AND COPPER CONDUCTOR ONLY.
  - 2) POWER MUST BE SUPPLIED TO CRANK CASE HEATER FOR A MINIMUM OF 12 HOURS PRIOR TO START UP. IF THE POWER SUPPLY HAS BEEN INTERRUPTED FOR LONGER PERIOD THEN AGAIN CRANK CASE HEATER MUST BE ENERGIZED FOR A MINIMUM OF 12 HOURS BEFORE STARTING OF COMPRESSOR.
  - 3) FUSED DISCONNECT SWITCH OR CIRCUIT BREAKER TO BE PROVIDED BY THE USER WITH RELEVANT RATING.
  - 4) PLEASE ALLOW 2 TO 3 MINUTES BEFORE STARTING OF COMPRESSOR.
  - 5) COMPRESSOR IS PROVIDED WITH INTERNAL OVERLOAD PROTECTION.
  - 6) POWER CIRCUIT FOR 208-230 V/3PH/60HZ
  - 7) POWER CIRCUIT FOR 380-415 V/3PH /50HZ, 380-400 V/3PH/60Hz & 460 V/3PH/60HZ WITH NEUTRAL
  - 8) REFER INSTRUCTIONS WITH THE COMPONENTS FOR STAR / DELTA CONNECTIONS
  - 9) IF THE POWER SUPPLY IS 230V, CONNECT TO L1 IF THE POWER SUPPLY IS 380V, CONNECT TO N

**OPTIONS**  
 OPT. 1 - NIL  
 OPT. 2 - SINGLE STAGE HEATING

WIR. DIA-RTP-1COMP-SPL		
C240328	1BC011C15	01

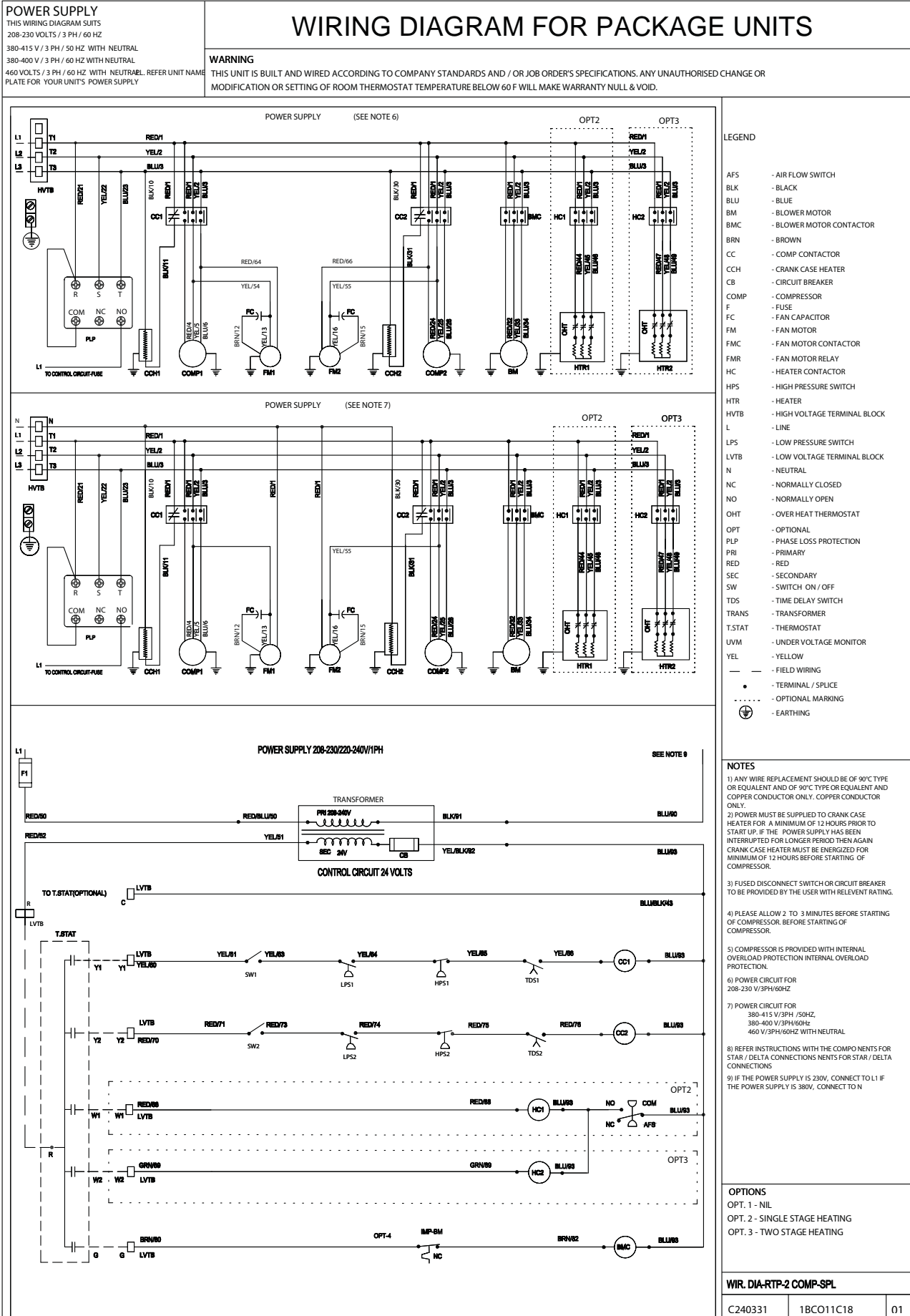
# UNIT SPECIFICATIONS

## WIRING DIAGRAM FOR 7.5TR UNITS



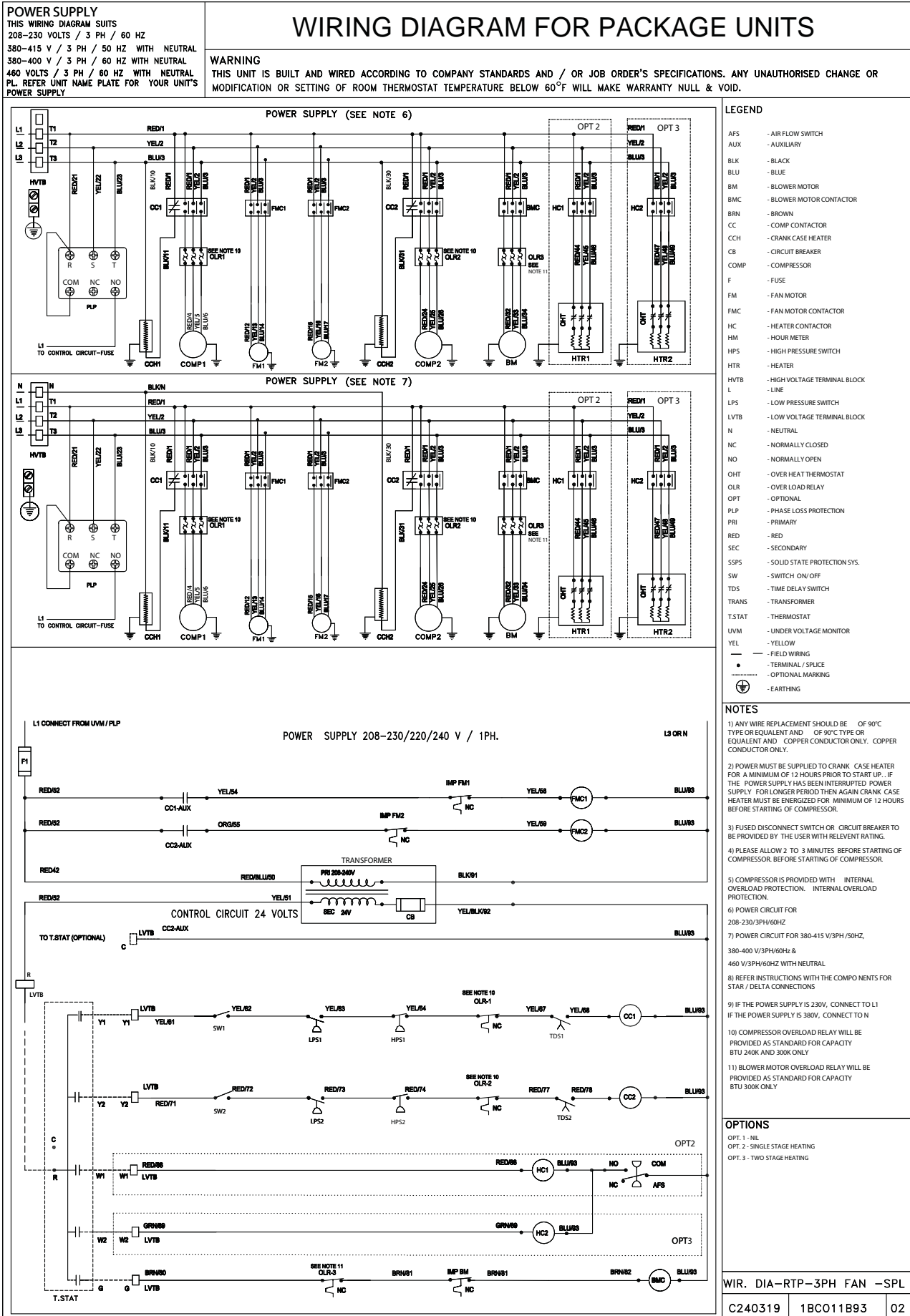
# UNIT SPECIFICATIONS

## WIRING DIAGRAM FOR 10TR, 12.5TR & 15TR UNITS



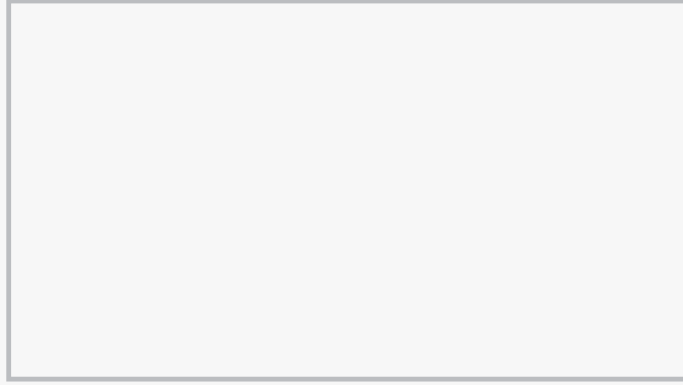
# UNIT SPECIFICATIONS

## WIRING DIAGRAM FOR 10TR, 12.5TR & 15TR UNITS





## Authorised Distributors



# Approvals\*



علامة الجودة الإماراتية  
Emirates Quality Mark



IEC System for Conformity Testing & Certification of Electro-technical  
Equipment and Components under CB Scheme



# AWAL GULF

MANUFACTURING Co. B.S.C. (C)

Post Box 15919, Manama, Kingdom of Bahrain  
Tel: 17 738333, Fax: 17 731541 / 17 731529  
E-mail: [export@awalgulf.com.bh](mailto:export@awalgulf.com.bh) Website: [www.awalgulf.com](http://www.awalgulf.com)

